



Wristband Solutions Guide

HealthTrust Contract #5609 Sole Source,
Laser Generated Wristbands

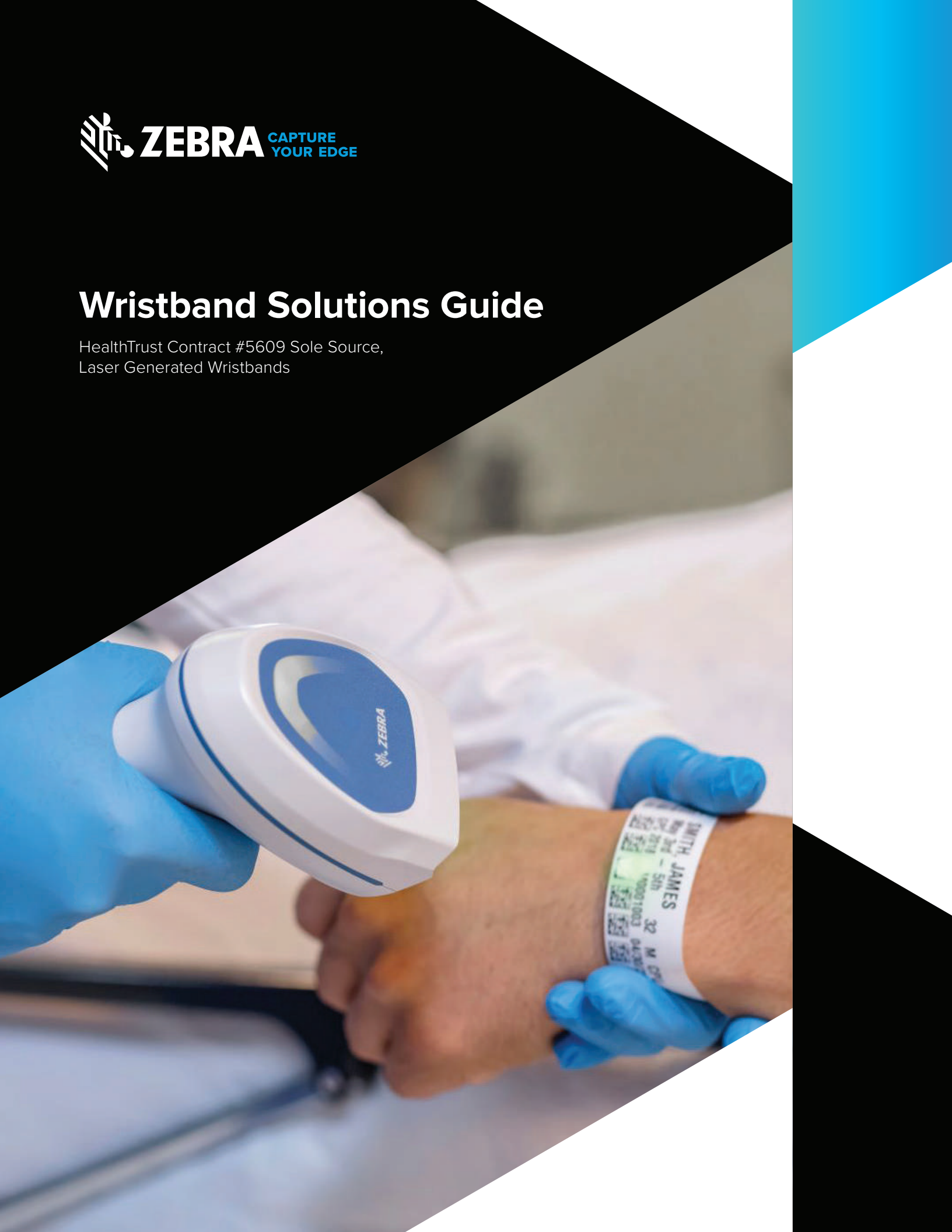




Table of Contents

LaserBand® Laser Wristbands & Labels 4

LaserBand2® Advanced Wristbands 5

LaserBand2 Dura Adult Wristbands 10

LaserBand® 2 11

LaserBand Original Wristbands 17

LaserBand ST Wristbands 22

Z-Band Fusion® Wristbands 23

LaserBand Laser Labels 25

Infant Comfort Solutions 27

Alert Wristbands & Label 28

OmniBand® 32

Ensure patient safety with Zebra's comfortable, proven wristbands

ID Wristbands that fail to scan can impact patient safety and the ability to provide timely patient care. That's why a majority of hospitals are choosing Zebra® thermal or laser hospital wristbands—proven to improve patient ID accuracy and operational efficiency point-of-care services. More than 382.8M patients globally were identified by Zebra patient wristbands in 2018. As a leader in patient ID wristbands, Zebra is proud to offer you one of the widest range of the most durable and simple-to-use direct-print laser wristbands.

Improved patient identification. The durability of Zebra's laser wristbands greatly reduces instances of unscannable wristbands. That ensures validated medication administration and procedures, as well as accurate sample identification.

Reduced nursing workarounds. Zebra laser wristband durability also greatly reduces occurrences of unscannable wristbands. Fewer unscannable wristbands means hospitals can use system-validated patient care and limit the need for nursing workarounds.

One-stop shop for all patient identification needs. Different hospital departments may have different patient identification needs. With Zebra's broad product portfolio, we have a solution, not only for the general patient population, but neo-natal, labor and delivery and outpatient services, while supporting your need to identify special patient conditions.

Patient ID solution expertise. As the manufacturer of not only wristbands but also thermal printers, barcode scanners and mobile computers, Zebra understands hospitals' patient ID needs and offers them a comprehensive patient ID solution.



LaserBand Laser Wristbands & Labels

LaserBand Wristband

Zebra's self-laminating LaserBand® direct-print laser wristbands enable wristband and label printing on one sheet utilizing existing laser printers.

- Self-laminating seal protects the wristband from moisture and hand sanitizers, preserving patient data, including text and barcodes, for longer wristband usability.
- Ability to simultaneously print patient chart labels and the wristband on one sheet, streamlining patient admissions.
- Available with hole-punches for securement into patient charts.
- Adhesive-free zones around form edges and holes prevent printer jams and reduce costly printer maintenance.
- Enables quick deployment of a barcoded wristband solution without the need for a separate printer for wristbands.



LaserBand2 Advanced Wristbands

Zebra's self-laminating LaserBand2® Advanced wristbands feature an advanced shape and design that make assembly easy and allows the wristband to lie flat on the wrist to enable quick scanning, while providing superior patient comfort.



Zebra's self-laminating direct-print laser wristbands allow printing wristbands and labels on one sheet utilizing existing laser printers.

- Self-laminating seal protects the wristband from moisture and hand sanitizers, preserving patient data, including text and barcodes for longer wristband usability.
- Ability to simultaneously print patient chart labels and the wristband on one sheet streamlines patient admissions.
- Available with hole punches for securement into patient charts.
- Adhesive-free zones around form edges and holes prevent printer jams and reduce costly printer maintenance.
- Enable quick deployment of a barcoded wristband solution without the need for a separate printer for wristbands.

Features Include

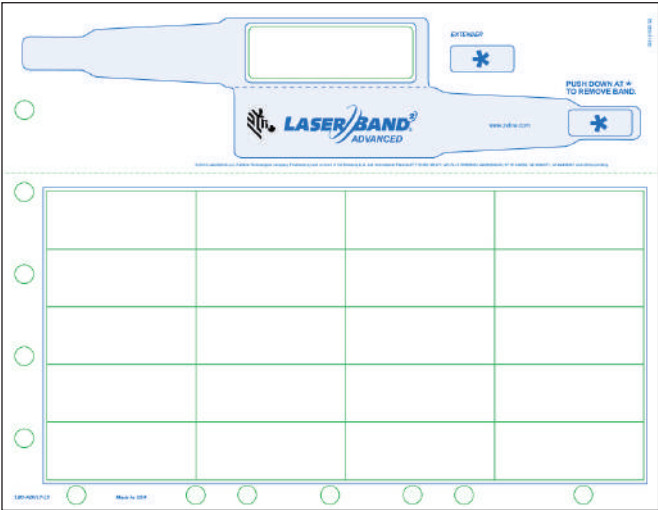
- Self-laminating design protects printed text and barcodes
- Tamper-evident, adhesive closure
- Wristband extender to fit a wide range of wrist sizes
- Available in adult, pediatric and infant sizes, as well as a labor and delivery format
- Latex-free

LaserBand2 Advanced Wristbands Specifications

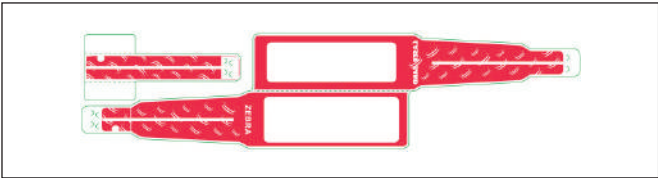
LaserBand2 Advanced wristbands are available in a wide offering of configurations to fit the patient identification needs of virtually all hospitals.

Adult Wristbands Full Sheet

Part Number	
LB2-ADULT-L3 White	
LB2-ADULT-L3-1X2 White with 2" x 1" labels	
LB2-ADULT-L3-RED Red	
LB2-ADULT-L3-BLU Blue	
LB2-ADULT-L3-YEL Yellow	
LB2-ADULT-L3-GRE Green	
LB2-ADULT-L3-ORA Orange	
Wristbands	
Length	9.625"
Print Area	2.75" x 0.875"
Labels	
Size	2.75" x 0.875" (option for white 2" x 1")
Quantity	20 per sheet (25 per sheet for LB2-ADULT-L3-1X2)
Labels	
Size	8.5" x 11"
Quantity	1,000 per case



Part Number: LB2-ADULT-L3

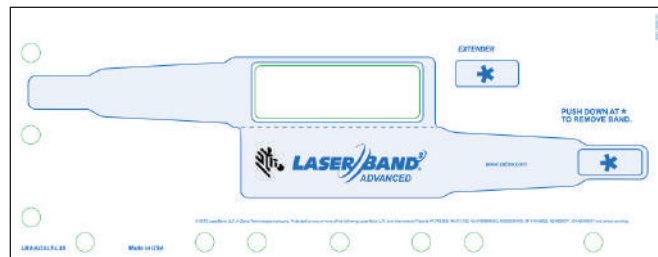


Part Number: LB2-ADULT-L3-RED (Location of color)

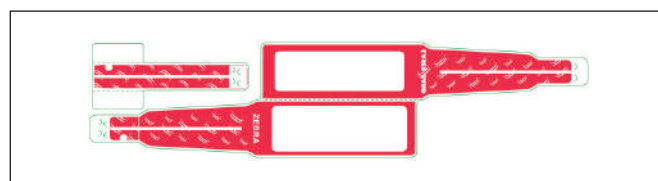
LaserBand2 Advanced Wristbands Specifications

Adult Wristbands Sheetlet

Part Number	
LB2-ADULT-L3S White	
LB2-ADULT-L3S-RED Red	
Wristbands	
Length	9.625"
Print Area	2.75" x 0.875"
Labels	
Size	4.25" x 11"
Quantity	1,000 per case



Part Number: LB2-ADULT-L3S

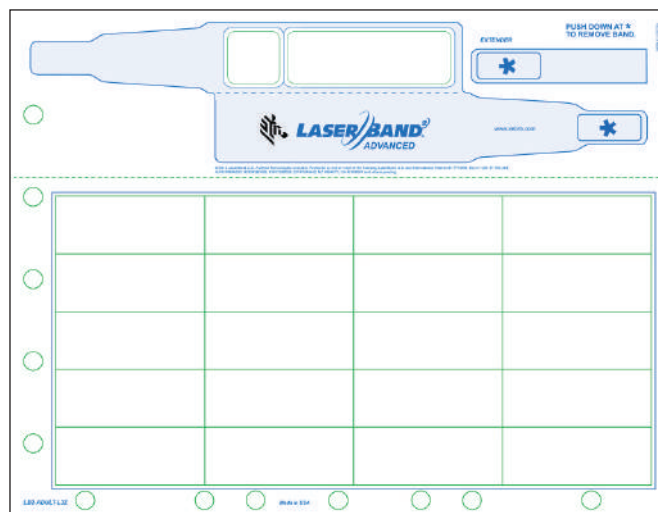


Part Number: LB2-ADULT-L3S-RED (Location of color)

Adult Zoned Wristbands Full Sheet

Zoned wristbands feature a separate area for calling out critical patient information.

Part Number	
LB2-ADULT-L3Z	
Wristbands	
Length	9.625"
Print Area	2.75" x 0.875"
Zoned Area	0.875" x 0.875"
Labels	
Size	2.75" x 0.875"
Quantity	20 per sheet
Sheet	
Size	8.5" x 11"
Quantity	1,000 per case

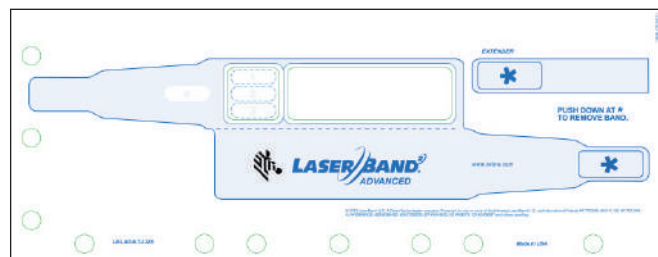


Part Number: LB2-ADULT-L3Z

LaserBand2 Advanced Wristbands Specifications

Adult Zoned Wristbands Sheetlet

Part Number	
LB2-ADULT-L3ZS	
Wristbands	
Length	9.625"
Print Area	2.75" x 0.875"
Zoned Area	0.875" x 0.875"
Sheet	
Size	4.25" x 11"
Quantity	1,000 per case

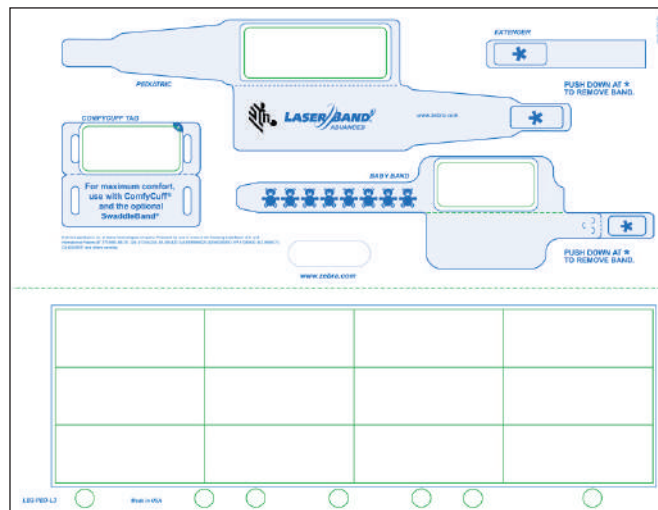


Part Number: LB2-ADULT-L3ZS

Pediatric / Infant Wristbands Full Sheet

Each sheet contains 1 pediatric wristband, 1 infant wristband, 12 labels and an ID Tag for use with ComfyCuff or Vinyl Infant Wristbands.

Part Number			
LB2-PED-L3 White with 2.5" x 1" labels			
LB2-PED-L3-1X2 White with 2" x 1" labels			
Wristbands			
	Pediatric	Infant	Tag
Length	6.5"	5.75"	n/a
Print Area	2.75" x 0.875"	1.625" x 0.75"	1.625" x 0.75"
Labels			
Size	2.5" x 1" 2" x 1"		
Quantity	12 per sheet (15 per sheet for LB2-PED-L3-1X2)		
Sheet			
Size	8.5" x 11"		
Quantity	1,000 per case		

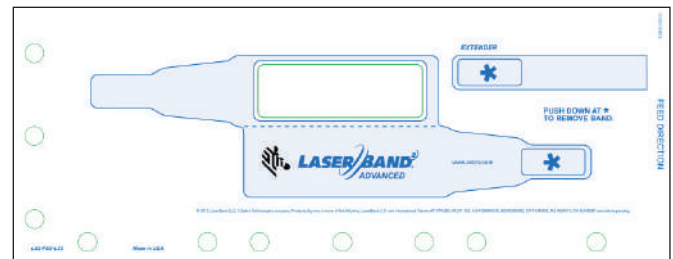


Part Number: LB2-PED-L3

LaserBand2 Advanced Wristbands Specifications

Pediatric Wristbands Sheetlet

Part Number	
LB2-PED-L3S White	
Wristbands	
Length	7.375"
Print Area	2.75" x 0.875"
Sheet	
Size	4.25" x 11"
Quantity	1,000 per case



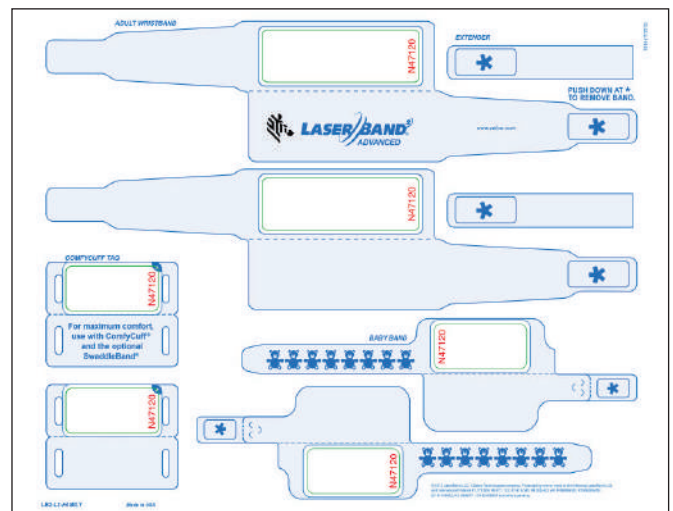
Part Number: LB2-PED-L3S

Labor and Delivery Wristbands Full Sheet

Each sheet contains 2 adult wristbands, 2 infant wristbands and 2 ID tags. Consecutively numbered sheets are available.

Part Number			
LB2-L3-FAMILY LB2-L3-FAMILY-NUM			
Wristbands			
	Pediatric	Infant	Tag
Length	9.125"	9.125"	n/a
Print Area	2.75" x 0.875"	1.625" x 0.75"	1.625" x 0.75"
Sheet			
Size	8.5" x 11"		
Quantity	1,000 per case		

Specifications subject to change without notice.



Part Number: LB2-L3-FAMILY-NUM

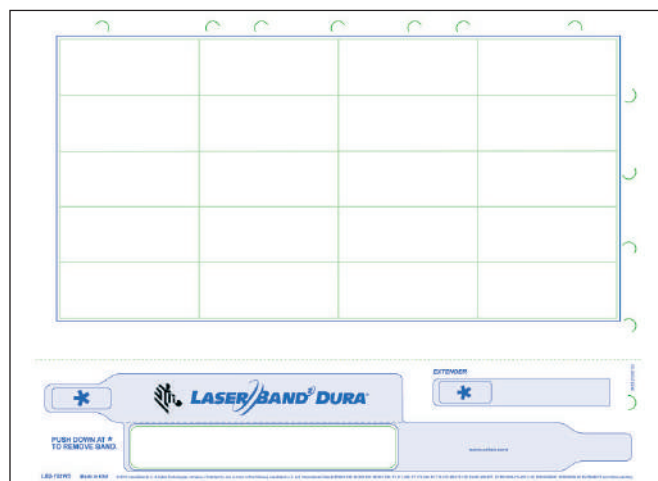
LaserBand2 Dura Adult Wristbands

Zebra's self-laminating LaserBand2 Dura direct-print laser wristbands feature a classic design that delivers improved comfort and ease of assembly over LaserBand Original.



Specifications

Part Number	
LB2-102W3	
Wristbands	
Length	9.625"
Print Area	4" x 0.75"
Labels	
Size	2.5" x 1"
Quantity	20 per sheet
Sheet	
Size	8.5" x 11"
Quantity	1,000 per case



Part Number: LB2-102W3

LaserBand® 2

Zebra's self-laminating LaserBand 2 laser wristbands feature an enhanced design over traditional laser wristbands that allow the wristbands to lie flat on the wrist to enable quick scanning, while providing superior patient comfort. Zebra's direct-print laser wristbands feature the ability to print wristbands and labels on one sheet utilizing existing laser printers.



- Patented self-laminating seal protects the wristband from moisture and hand-sanitizers, preserving patient data for longer wristband usability.
- Ability to simultaneously print patient chart labels and the wristband on one sheet, streamlining patient admissions.
- Available with hole-punches for securement into patient charts.
- Adhesive-free zones around form edges and holes prevent printer jams and reduces costly printer maintenance.
- Enables quick deployment of a barcoded wristband solution without the need for a separate printer for wristbands.

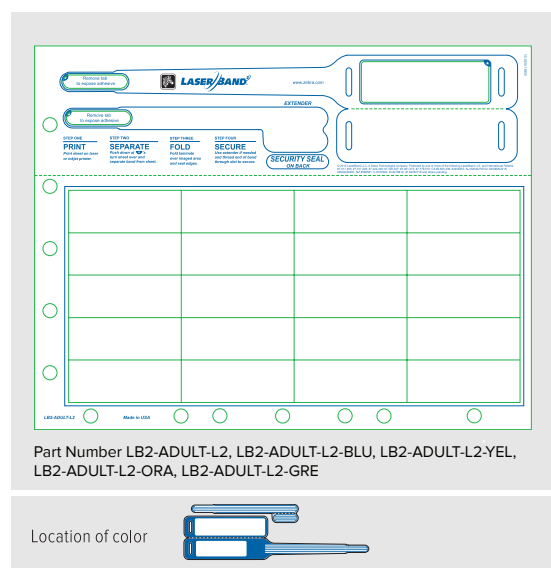
Features Include

- Self-laminating design protects printed text and barcodes
- Tamper-evident, adhesive closure
- Wristband extender to fit a wide range of wrist sizes
- Available in adult, pediatric and infant sizes, as well as a labor and delivery format
- Latex-free

LaserBand® 2 Wristbands Specifications

Adult Wristbands Full Sheet

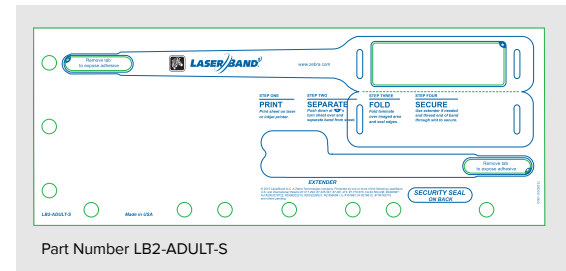
Part Number	
LB2-ADULT-L2 White	
LB2-ADULT-L2-BLU Blue	
LB2-ADULT-L2-YEL Yellow	
LB2-ADULT-L2-ORA Orange	
LB2-ADULT-L2-GRE Green	
Wristbands	
Length	8.25"
Print Area	2.75 x 0.875"
Labels	
Size	2.5 X 1"
Quantity	20 per sheet
Sheet	
Size	8.5" x 11"
Quantity	1,000 per case



LaserBand® 2 Wristbands Specifications

Adult Wristband Sheetlet

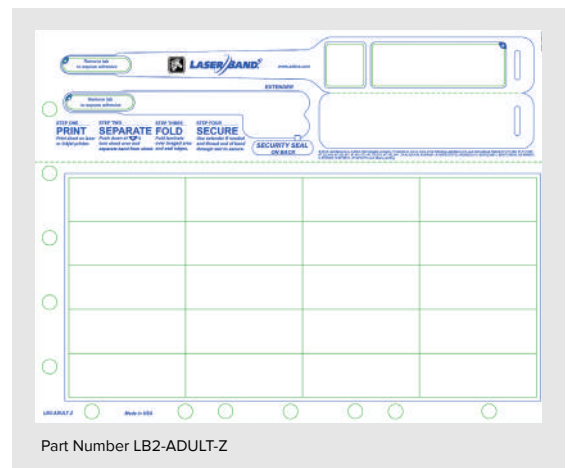
Part Number	
LB2-ADULT-S	
Wristbands	
Length	8.25"
Print Area	2.75 x 0.875"
Sheet	
Size	4.25" x 11"
Quantity	1,000 per case



Adult Zoned Wristbands Full Sheet

Zoned wristbands feature a separate printable area for calling out critical patient information.

Part Number	
LB2-ADULT-Z	
Wristbands	
Length	8.25"
Print Area	2.75 x 0.875", plus additional 0.8125 x 0.875"
Labels	
Size	2.5" x 1"
Quantity	20 per sheet
Sheet	
Size	8.5" x 11"
Quantity	1,000 per case

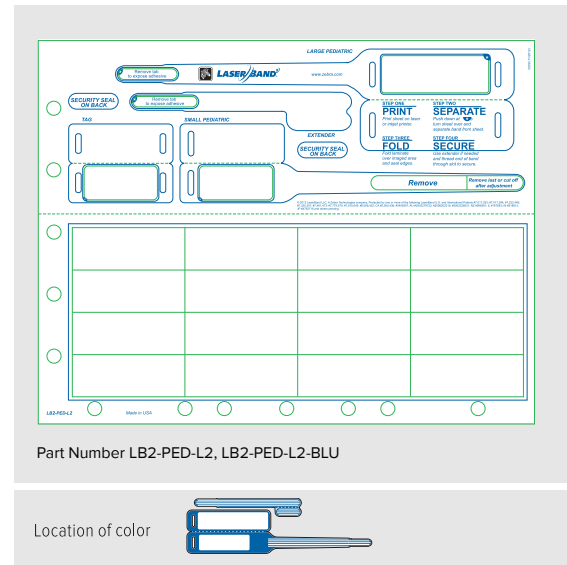


LaserBand® 2 Wristbands Specifications

Pediatric Wristbands Full Sheet

Each sheet contains 1 pediatric and 1 infant wristband.

Part Number	
LB2-PED-L2 White	
LB2-PED-L2-BLU Blue	
Wristbands	
Length	Pediatric: 7.125" Infant: 5.75"
Print Area	Pediatric: 2.375 x 0.75" Infant: 1.625 x 0.75"
Tag	
Print Area	1.625 x 0.75"
Labels	
Size	2.5" x 1"
Quantity	16 per sheet
Sheet	
Size	8.5" x 11"
Quantity	1,000 per case

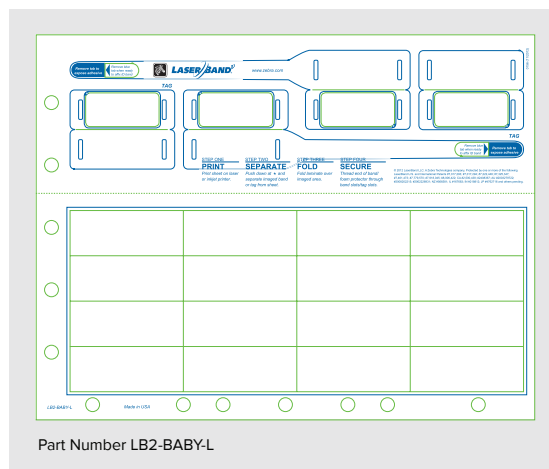
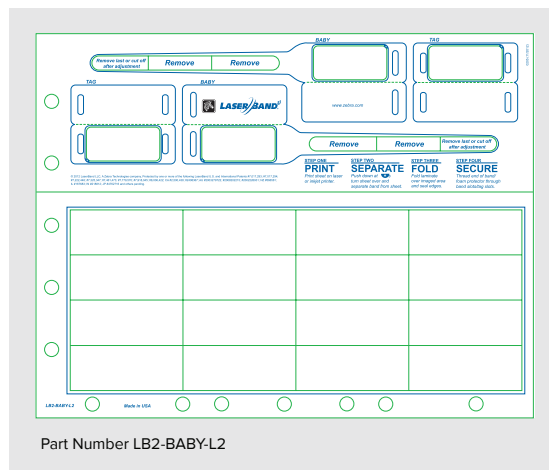


LaserBand® 2 Wristbands Specifications

Infant Wristbands Full Sheet

Each sheet contains 2 infant wristbands (standard format) and 2 ID tags.

Part Number	
LB2-BABY-L2 Standard	
LB2-BABY-L Standard or hang tag	
Wristbands	
Length	5.75"
Print Area	1.625 x 0.75"
Labels	
Size	2.5" X 1"
Quantity	16 per sheet
Sheet	
Size	8.5" x 11"
Quantity	1,000 per case

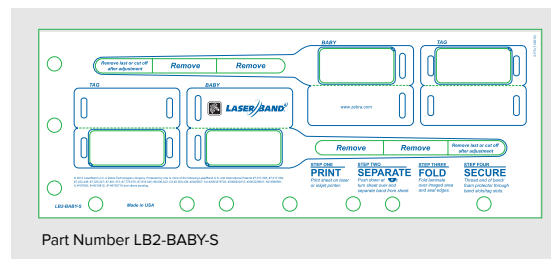


LaserBand® 2 Wristbands Specifications

Infant Wristbands Sheetlet

Each sheet contains 2 infant wristbands and 2 ID tags.

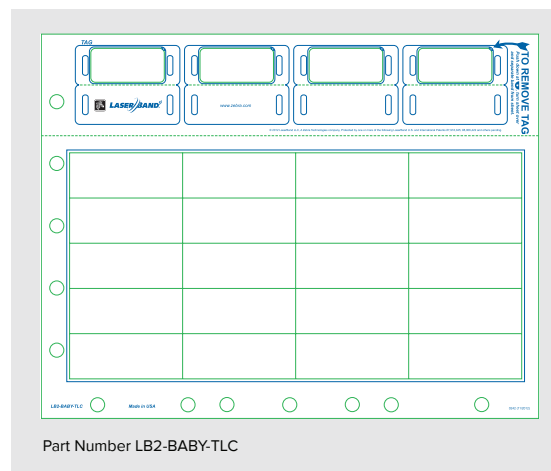
Part Number	
LB2-BABY-S	
Wristbands	
Length	5.75"
Print Area	1.625 x 0.75"
Tags	
Print Area	1.625 x 0.75"
Sheet	
Size	4.25" x 11"
Quantity	1,000 per case



Infant Wristbands Full Sheet

Each sheet contains 4 ID tags.

Part Number	
LB2-BABY-TLC	
Tags	
Print Area	1.625 x 0.75"
Labels	
Size	2.5" x 1"
Quantity	20 per sheet
Sheet	
Size	8.5" x 11"
Quantity	500 per case

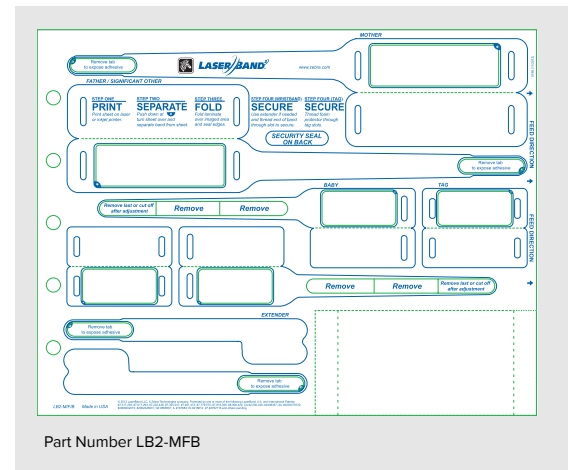


LaserBand® 2 Wristbands Specifications

Labor and Delivery Wristbands Full Sheet

Each sheet contains two adult and two infant wristbands, 2 ID tags, and a crib card.

Part Number	
LB2-MFB	
Wristbands	
Length	Adult: 8.25" Infant: 5.75"
Print Area	Adult: 2.75 x 0.875" Infant: 1.625 x 0.75"
Sheet	
Size	8.5" x 11"
Quantity	1000 per case



LaserBand Original Wristbands

Developed by Zebra, LaserBand Original was the first direct print laser wristband in the market that featured a self-laminating seal to protect the wristband from moisture and hand-sanitizers.



- Patented self-laminating seal protects the wristband from moisture and hand-sanitizers, preserving patient data for longer wristband usability.
- Ability to simultaneously print patient chart labels and the wristband on one sheet, streamlining patient admissions.
- Available with hole-punches for securement into patient charts.
- Adhesive-free zones around form edges and holes prevent printer jams and reduces costly printer maintenance.
- Enables quick deployment of a barcoded wristband solution without the need for a separate printer for wristbands

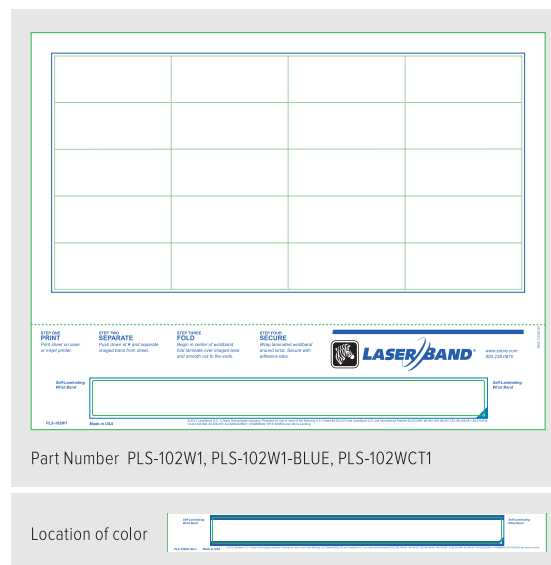
Features Include

- Self-laminating design protects printed text and barcodes
- Tamper-evident, adhesive closure
- Available in adult, pediatric, and infant sizes, as well as a labor and delivery, and Standard Register-compatible formats
- Latex-free

LaserBand Original Wristbands Specifications

Adult Wristbands Full Sheet

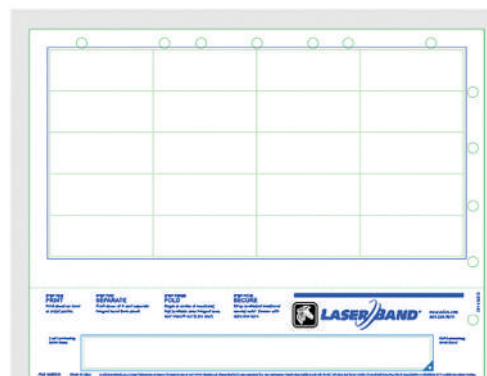
Part Number	
PLS-102W1 White	
PLS-102W1-BLUE	
PLS-102WCT1 White Tamper Evident	
Wristbands	
Length	8.375"
Width	0.75"
Labels	
Size	2.5" x 1"
Quantity	20 per sheet
Sheet	
Size	8.5" x 11"
Quantity	1,000 per case



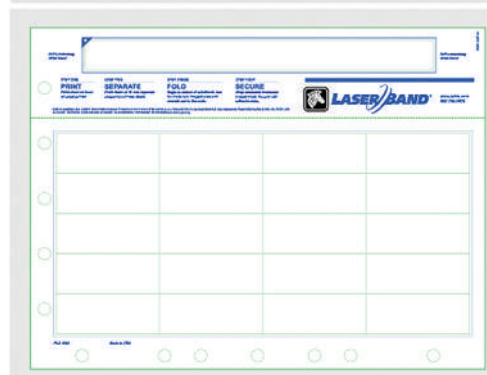
LaserBand Original Wristbands Specifications

Adult Wristband Full Sheet Hole-Punched

Part Number	
PLS-102W1 White PLS-102W1-BLUE PLS-102WCT1 White Tamper Evident	
Wristbands	
Length	8.375"
Width	0.75"
Labels	
Size	2.5" x 1"
Quantity	20 per sheet
Sheet	
Size	8.5" x 11"
Quantity	1,000 per case



Part Number PLS-102WCH

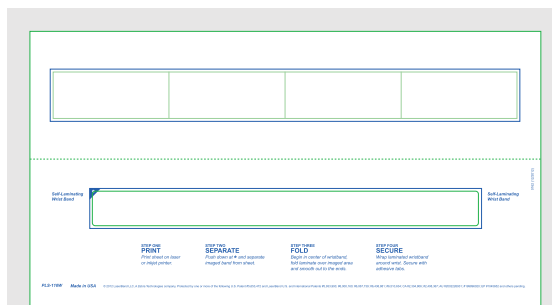


Part Number PLS-102A

LaserBand Original Wristbands Specifications

Adult Wristband Sheetlet

Part Number	
PLS-102W1 White PLS-102W1-BLUE PLS-102WCT1 White Tamper Evident	
Wristbands	
Length	8.375"
Width	0.75"
Labels	
Size	2.5" x 1"
Quantity	20 per sheet
Sheet	
Size	8.5" x 11"
Quantity	1,000 per case



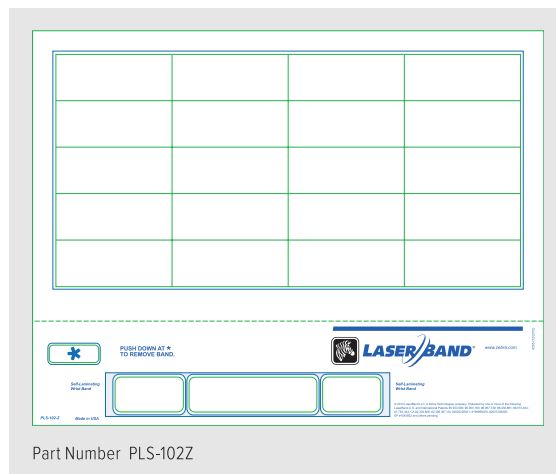
Part Number PLS-110W

LaserBand Original Wristbands Specifications

Adult Zoned Wristbands Full Sheet

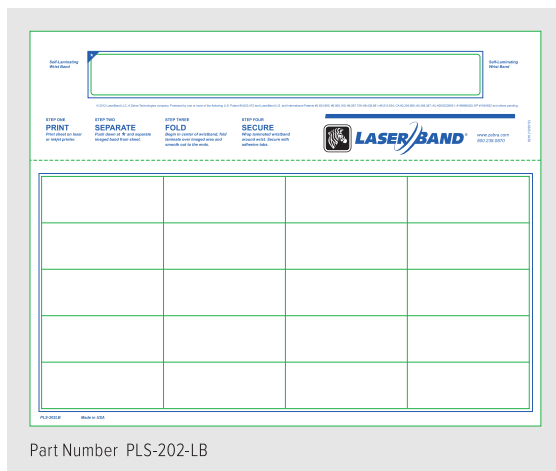
Zoned wristbands feature a separate printable area for calling out critical patient information.

Part Number	
PLS-102Z	
Wristbands	
Length	8.375"
Width	0.75"
Labels	
Size	2.625" x 1"
Quantity	20 per sheet
Sheet	
Size	8.5" x 11"
Quantity	1,000 per case



Adult Wristbands Full Sheet Standard Register Compatible

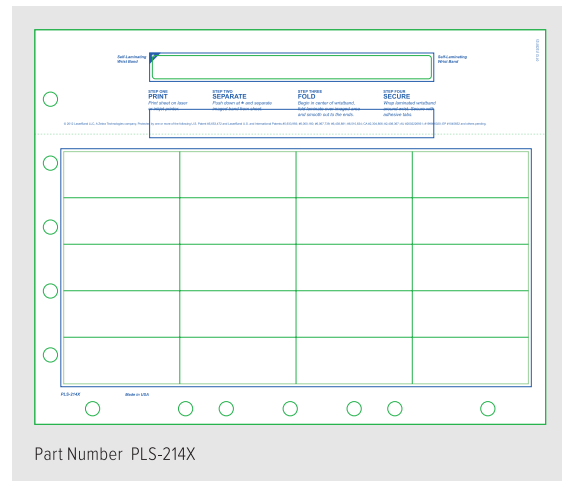
Part Number	
PLS-202-LB	
Wristbands	
Length	8.375"
Width	0.75"
Labels	
Size	2.625" x 1"
Quantity	20 per sheet
Sheet	
Size	8.5" x 11"
Quantity	1,000 per case



LaserBand Original Wristbands Specifications

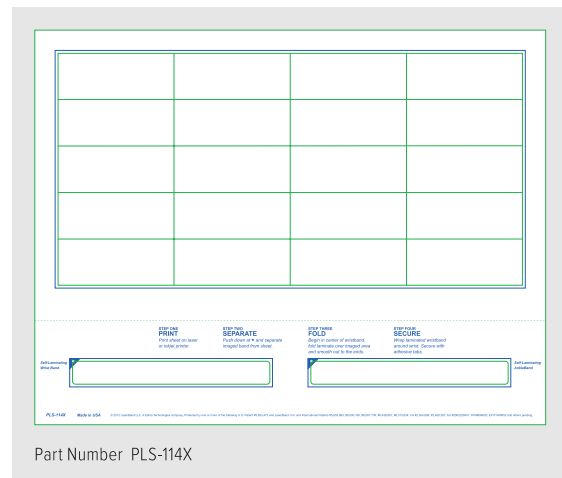
Pediatric Wristbands Full Sheet Hole-Punched

Part Number	
PLS-214X	
Wristbands	
Length	6"
Width	0.50"
Labels	
Size	2.625" x 1"
Quantity	20 per sheet
Sheet	
Size	8.5" x 11"
Quantity	1,000 per case



Infant Wristbands Full Sheet

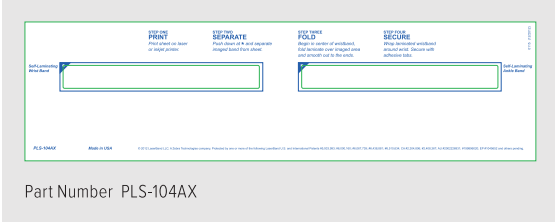
Part Number	
PLS-114X	
Wristbands	
Length	4.25"
Width	0.50"
Labels	
Size	2.625" x 1"
Quantity	20 per sheet
Sheet	
Size	8.5" x 11"
Quantity	1,000 per case



LaserBand Original Wristbands Specifications

Infant Wristband Sheetlet

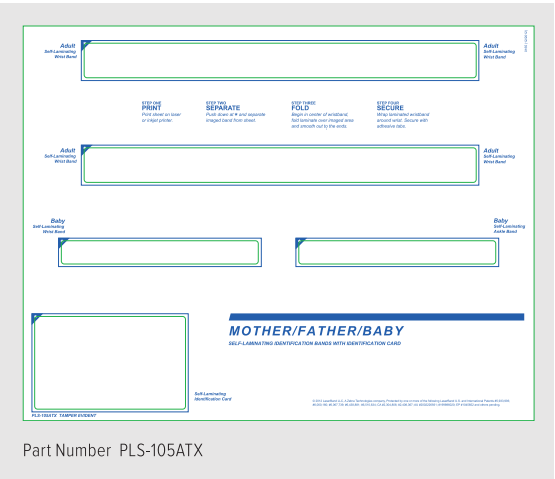
Part Number	
PLS-104AX	
Wristbands	
Length	4.25"
Width	0.50"
Quantity	2 per sheet
Sheet	
Size	3" x 11"
Quantity	1,000 per case



Labor and Delivery Wristbands Full Sheet

Each sheet contains two adult and two infant wristbands and a crib card.

Part Number			
Part number	PLS-105ATX		
Wristbands			
	Adult	Infant	Crib Card
Length	8.375"	4.25"	3.25"
Width	0.75"	0.50"	2"
Quantity per sheet	2	2	1
Sheet			
Size	8.5" x 11"		
Quantity	500 per case		



Specifications subject to change without notice.

LaserBand ST Wristbands

Utilizing an existing laser printer, Zebra's LaserBand ST is perfect for identifying patients during procedures in ambulatory surgery centers and outpatient clinics.

Zebra's direct-print laser wristbands feature the ability to print wristbands and labels on one sheet utilizing existing laser printers, enabling simple deployment of a barcode wristband solution.

For nearly a decade, Zebra has worked with acute and non-acute facilities throughout the world to provide laser and thermal positive patient ID solutions to improve patient safety.



LaserBand ST Wristbands Specifications

LaserBand ST wristbands are available in two configurations to fit virtually all acute and non-acute facilities' short-term patient identification needs.

Part Number	
LB2-ADULT-ST4	
Wristbands	
Length	10.25"
Labels	
Size	1" x 2.5"
Quantity	4 per sheet
Sheet	
Size	8.5" x 11"
Quantity	1,000 per case

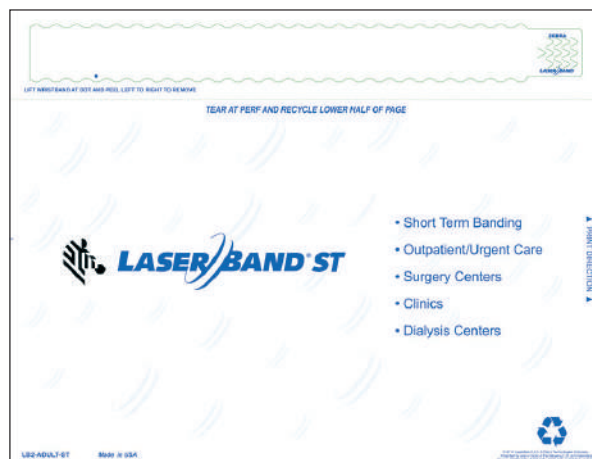
Specifications subject to change without notice.



Part Number: LB2-ADULT-ST4

Part Number	
LB2-ADULT-ST	
Wristbands	
Length	10.25"
Sheet	
Size	8.5" x 11"
Quantity	1,000 per case

Specifications subject to change without notice.



Part Number: LB2-ADULT-ST

Z-Band Fusion

Zebra's self-laminating Z-Band Fusion® direct thermal polypropylene wristband is perfect for use at specialized hospitals where the average patient stay exceeds 14 days.

The advanced shape and design makes assembly easy and allows the wristband to lie flat on the wrist to enable quick scanning, while providing superior patient comfort.



Features Include

- Self-laminating design protects the printed text and barcodes
- Adhesive-closure
- Wristband extender to fit a wide range of wrist sizes
- Available in Adult, Pediatric, and Infant sizes
- Includes Patient Chart Label
- Durable for an extended time
- Latex-free

Z-Band Fusion Specifications

Z-Band Fusion wristbands are available in a wide offering of sizes to meet the needs of most patients.

Adult Wristbands

Part Number	
FID-ADULT-L3-1-200T FID-ADULT-L3-3-500T	
Wristbands	
Length	9.25"
Print Area	2.75" x 0.875"
Labels	
Size/Quantity	2.75" x 0.875" 1 per sheet
Sheet	
Width	3"
Quantity per Roll	200 (FID-ADULT-L3-1-200T) 500 (FID-ADULT-L3-3-500T)
Roll	
Inner Diameter	1" (FID-ADULT-L3-1-200T) 3" (FID-ADULT-L3-3-500T)
Outer Diameter	5" (FID-ADULT-L3-1-200T) 8" (FID-ADULT-L3-3-500T)



Part Number: FID-ADULT-L3-1-200T, FID-ADULT-L3-3-500T

Ideal for use in specialized hospitals such as:

- Rehabilitation Hospitals
- Psychiatric Wards and Hospitals
- Long-term Care Hospitals

Pediatric Wristbands

Part Number	
FID-PED-L3-1-200T	
Wristbands	
Length	7.375"
Print Area	2.75" x 0.875"
Labels	
Size/Quantity	2.75" x 0.875" 1 per sheet
Sheet	
Width	3"
Quantity per Roll	200
Roll	
Inner Diameter	1"
Outer Diameter	5"

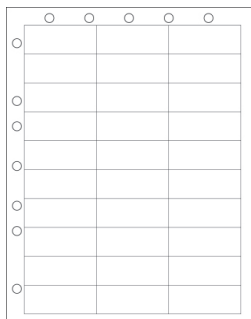


Part Number: FID-PED-L3-1-200T

LaserBand Laser Labels

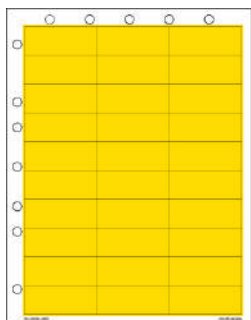
Zebra's LaserBand paper laser labels feature an adhesive-free zone around the form and edges to prevent printer jams, reducing costly printer maintenance. LaserBand labels are available in multiple formats to integrate into any healthcare environment, including multiple sizes, colors and with and without hole punches.

LaserBand Laser Labels Specifications



Standard White Labels, 8.5" x 11" Sheet

Label Size	Hole-Punched	Labels Per Sheet	Special Feature	Part Number
2.5" x 1"	Yes	30		PLS-103
2.5" x 1"	No	30	Perforated	PLS-103P
2.5" x 1"	No	30	Removable Adhesive	PLS-103R
2.625" x 1"	No	32	Landscape Format	PLS-204
2.8125" x 1"	No	21		PLS-113
2.5" x 1"	Yes	30		I-V30
2.5" x 1"	No	32	Landscape Format	I-V32



2.5" x 1" Standard Color Labels, 8.5" x 11" Sheet

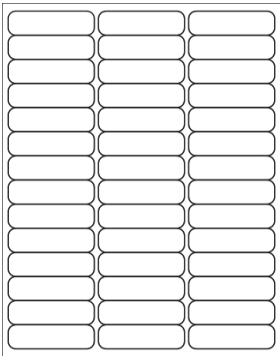
Color	Hole-Punched	Labels Per Sheet	Part Number
Yellow	Yes	30	PLS-103X-YEL
Pink	Yes	30	PLS-103X-PNK



White Label Sheetlet, 6" x 11" Sheet

Label Size	Hole-Punched	Labels Per Sheet	Part Number
2.5" x 1"	Yes	10	PLS-123X

LaserBand Laser Labels Specifications



Standard Register Compatible White Labels, 8.5" x 11" Sheet			
Label Size	Hole-Punched	Labels Per Sheet	Part Number
2.625" x 0.75"	No	42	PLS-203

Infant Comfort Solutions

Wristbanding infants is a sensitive issue. While hospitals go to great lengths to properly identify infants, staff members are also concerned with the comfort and durability of the wristbands. Zebra kept these challenges in mind when creating a complete line of infant comfort solutions.



ComfyCuff

This soft foam cuff features an adjustable Velcro® closure, ensuring infant comfort. It can be used in conjunction with LaserBand2 Advanced pediatric / infant ID tags.

5" x 1.25", Latex Free, Part Number: LB2-BABY-P



ComfyCuff Security Seal

This security label is designed to securely stick to the ComfyCuff material and self-destruct to indicate wristband tampering.

2.875" x 0.4375", Latex-free, Part Number: LB2-BABY-CCS



ComfyCuff Infant Swaddle Band

This soft Tyvek® band makes identifying a swaddled baby quick and easy. The Swaddle Band creates an extension between the ComfyCuff and LaserBand2 and LaserBand2 Advanced infant ID tags for easy tag access.

9" long, Latex Free, Part Number: LB2-BABY-SWB9



Clip-closure



Self-locking

Vinyl Infant Wristband

These latex-free, soft, flexible vinyl wristbands are for use with LaserBand2 Advanced infant ID tags. The narrow width allows some models of "Abduction Prevention Systems" to be attached. They are available with a clip or self-locking closure. The self-locking closure wristband enables size adjustment with a gentle tug as the infant loses mass around the wrists and ankles within the first 24 hours of birth.

Clip-Closure Part Number: PS-BABY

Self-Locking Closure Part Number: PS-INFANT-ADJ

Alert Wristbands and Labels

Enable quick identification of special patient conditions with color-coded wristbands and labels from Zebra. Our solutions enable compliance with state, regional and local color-coding standards for patient conditions such as allergy, DNR, fall risk, latex allergy and restricted limb.



Spot-alert labels

Spot-alert color-coded labels can adhere to any wristband and feature a strong adhesive that causes the label to tear if tampering occurs. They are available in standard color and designation combinations to support the most critical patient conditions.



Slim alert wristbands

These color-coded vinyl clip-closure wristbands are 0.625 inch by 10 inches and are pre-printed with patient conditions.



Tyvek alert wristbands

These color-coded Tyvek adhesive closure wristbands are 1 inch by 10 inches and are pre-printed with patient conditions.

Spot-alert Label Specifications

Labels	
Small size	0.75" x 0.25"
Large size	1.3125" x 0.375"
Sheet	
Size	2.5" x 3.5"
Quantity	1,000 per case


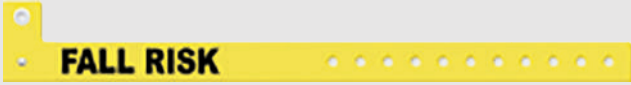




Specifications subject to change without notice.

Part Number	Color / designation	Part Number	Color / designation
LB-ALERT-ALLERGY	<p>Red / Allergy</p> 	LB-ALERT-DNR-PUR	<p>Purple / DNR</p> 
LB-ALERT-FALL RISK	<p>Yellow / Fall Risk</p> 	LB-ALERT-LIMB ALERT	<p>Pink / Limb Alert</p> 
LB-ALERT-LATEX ALLERGY	<p>Green / Latex Allergy</p> 	LB-ALERT-AZ	<p>1 of each of the following:</p> <p>Red / Allergy</p> <p>Yellow / Fall Risk</p> <p>Green / Latex Allergy</p> <p>Purple / DNR</p> <p>Pink / Limb Alert</p> <p>Orange / Blank</p> 

Slim Alert Wristbands Specifications

Wristbands	
Size	0.625" x 10"
Closure	Clip
Quantity	500 per case







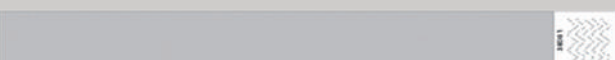


Specifications subject to change without notice.

Part Number	Color / designation
PS-ALLERGY-RD	Red / Allergy 
PS-FALLRISK-YEL	Yellow / Fall Risk 
PS-LATEXALLERGY-GRE	Green / Latex Allergy 
PS-DNR-PUR	Purple / DNR 
PS-BLANK-PUR	Purple / Blank 
PS-LIMBALERT-PNK	Pink / Limb Alert 

Tyvek Alert Wristbands

Wristbands	
Size	1" x 10"
Closure	Adhesive
Quantity	1,000 per case

Specifications subject to change without notice.

Part Number	Color / designation
TY-ALLERGY	Red / Allergy 
TY-FALL RISK	Yellow / Fall Risk 
TY-LATEX ALLERGY	Green / Latex Allergy 
TY-DNR-PUR	Purple / DNR 
TY-LIMB ALERT	Pink / Limb Alert 
TY-NONSTICKNOBP	Pink 
TY-BLANK-SIL	Silver / Blank 
TY-OSARISK	Blue 
TY-ISOLATION	Green / Isolation 

OmniBand

Healthcare providers currently printing barcode labels can quickly implement barcode wristbands by placing a laser or thermal barcode label in Zebra's self-laminating OmniBand® wristband—without the need for IT support.



Features Include:

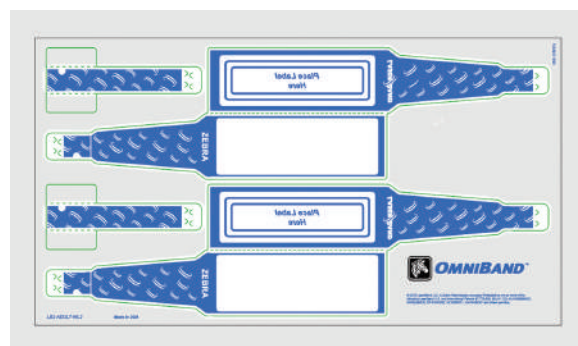
- Self-laminating design that protects printed text and barcodes
- Tamper-evident adhesive closure
- Wristband extender to fit a wide range of wrist sizes
- Accepts labels up to 3.25" x 1"
- Available in adult and pediatric sizes
- Latex-free
- Two wristbands per sheet

Ideal for specialized use in hospitals such as:

- Rehabilitation hospitals
- Psychiatric wards and hospitals
- Long-term care hospitals

OmniBand wristband specifications

Part Number		
White—Adult	LB2-ADULT-WL3	
White—Pediatric	LB2-PED-WL3	
Red	LB2-ADULT-WL3-RED	
Blue	LB2-ADULT-WL3-BLU	
Orange	LB2-ADULT-WL3-ORA	
Wristbands		
	Adult	Pediatric
Length	10"	8"
Label area	3.375" x 1.125"	2.375" x 0.875"
Label size	3.25" x 1"	2.25" x 0.75"
Sheet		
Size	4.25" x 11"	
Quantity	500 per case	



Specifications subject to change without notice.

For more information on Zebra healthcare wristbands,
please visit www.zebra.com/wristbands



NA and Corporate Headquarters
+1 800 423 0442
inquiry4@zebra.com

Asia-Pacific Headquarters
+65 6858 0722
contact.apac@zebra.com

EMEA Headquarters
zebra.com/locations
contact.emea@zebra.com

Latin America Headquarters
+1 786 245 3934
la.contactme@zebra.com