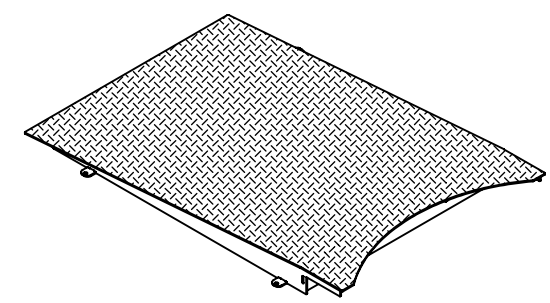
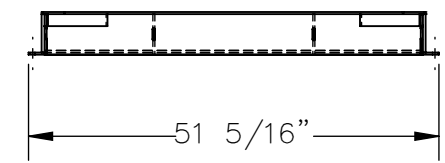
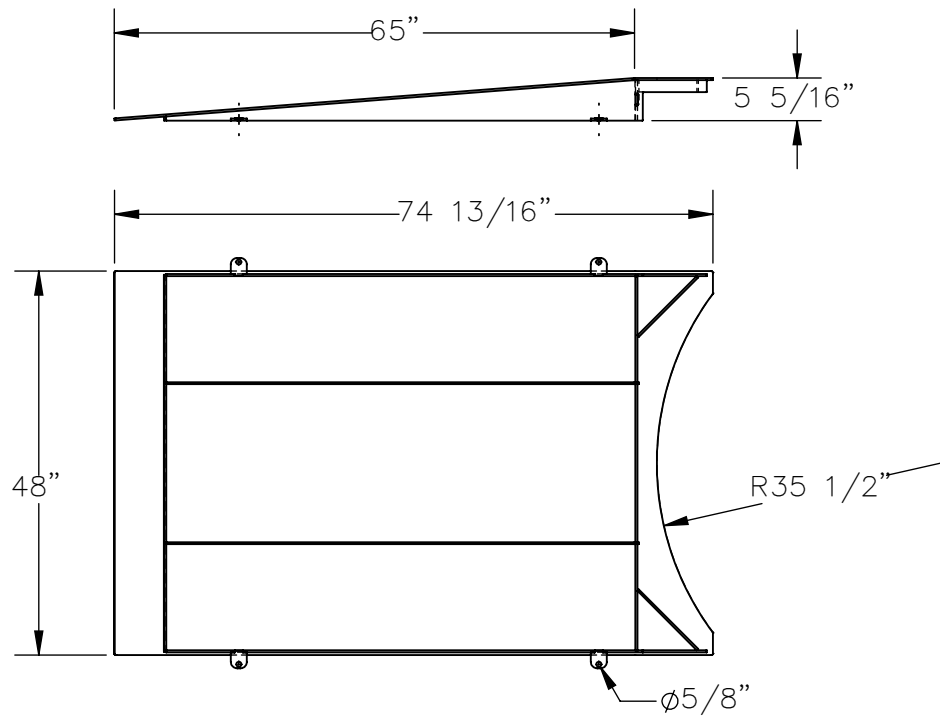


# APPROACH RAMP: SWA-70-R-4860-SCL

APPROX WEIGHT: 311.26 lbs.  
DOES NOT INCLUDE WEIGHT OF POWER OR PACKAGING!!!

\*\*\* ANY ADDITIONS, DELETIONS, OR OMISSIONS MUST BE CORRECTED ON THIS DRAWING AS THIS DRAWING WILL BE CONSIDERED ALL INCLUSIVE \*\*\*  
ALL GRAPHICS PROVIDED ARE FOR REFERENCE ONLY. IF CERTAIN DIMENSIONS ARE CRITICAL PLEASE VERIFY THOSE DIMENSIONS WITH YOUR SALESPERSON



3-D VIEW FOR REFERENCE

**\*\*THIS RAMP IS TO BE USED IN CONJUNCTION WITH AN SWA-70 STRETCH WRAP MACHINE AND AN SWA-70-SCALE\*\***

**\*\*STRETCH WRAP MACHINE AND SCALE SOLD SEPARATELY\*\***

## STANDARD FEATURES

- MODEL NUMBER IS SWA-70-R-4860-SCL
- MAX. CAPACITY IS 4,000 LBS
- OVERALL LENGTH IS 74 13/16"
- OVERALL HEIGHT IS 5 5/16"
- OVERALL WIDTH IS 51 5/16"
- USABLE WIDTH IS 48"
- INCLUDES (4) 5/8" ANCHOR HOLES
- TREADPLATE RAMP SURFACE
- DURABLE BAKED IN POWDER COATED BLUE FINISH

## SPECIAL FEATURES

NONE

DIMENSION TOLERANCE ± 1/4"

<b>APPROVAL</b>	I, THE UNDERSIGNED, AGREE THAT THE PRODUCT AS REPRESENTED SATISFIES DESIGN AND DIMENSION REQUIREMENTS. I ALSO ACKNOWLEDGE MY DUTY TO CONFIRM PRODUCT AND INSTALLATION COMPLIANCE WITH ALL APPLICABLE FEDERAL, STATE AND LOCAL REGULATIONS AND STANDARDS.	
	<b>UNITS REQUIRING APPROVAL DRAWINGS OR MODIFIED ARE NON-RETURNABLE</b>	
	[ ] As drawn      [ ] As marked	
Signed: _____		Date: _____
Printed Name: _____		
<i>LEAD TIME WILL START UPON RECEIPT OF SIGNED APPROVAL DRAWING</i>		

DISTRIBUTOR'S NAME:		P.O.#
VESTIL MANUFACTURING		X
DRAWN BY: SJA		DATE: 4/1/2015
REFERENCE: X		SCALE: 1:24
QUOTED LEAD TIME: X		QUOTE #
		X
		FILE NAME:
		20-007-090