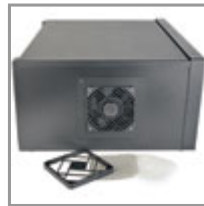


5U Security DVR Lockbox Enclosure

MODEL NUMBER: SRDVRLB



Securely stores and cools your digital video recorder (DVR) to protect it from damage, tampering or theft. Ideal for retail outlets, warehouses, offices and other locations that use a DVR for security purposes.

Description

The SRDVRLB 5U Security DVR Lockbox Enclosure is an all-in-one solution for securely storing and cooling your security digital video recorder (DVR) to protect it from damage, tampering or theft. It's ideal for network closets, retail outlets, warehouses, offices, classrooms and other locations where you need a DVR to be securely protected from unauthorized access. Constructed from heavy-duty steel in a durable black powder-coat finish, the SRDVRLB has a maximum load capacity of 60 lbs (27.2 kgs).

To ensure your valuable DVR data stays safe and secure, the front door locks with the included keys. The edges of the door wrap around the left and right sides of the enclosure and the removable top panel to ensure the DVR's safety. The right side panel is ventilated to allow air to flow freely through the cabinet. The left side panel includes a preinstalled cooling fan with washable air filter that blows cool air onto the DVR and prevents dust and airborne particles from entering the enclosure. Convenient rear and bottom ports with removable covers allow easy cable routing through the enclosure.

The SRDVRLB comes fully assembled and ready to mount on a wall, floor or tabletop. Installing a security DVR within the enclosure is easy with its removable top panel, square mounting holes and numbered rack spaces. The front and rear mounting rails adjust in 1-inch increments to accommodate equipment from 1 to 16 inches deep.

Features

Saves Valuable Workspace

- Perfect for network closets, retail outlets, warehouses, offices, classrooms and other locations where you need a security DVR to be protected from unauthorized access
- Houses a rack or non-rack security DVR in 5U of rack space
- Has maximum load capacity of 60 lbs (27.2 kgs)

Keeps Important Equipment Secure

- Lockable front door overlaps side panels and removable top to protect DVR against damage, tampering or theft
- Preinstalled cooling fan with washable air filter blows cold air and prevents dust from entering the enclosure
- Vented side panel allows general airflow that keeps DVR cool
- Convenient ports with removable covers allow cable routing through bottom and rear

Highlights

- Maximum load capacity of 60 lbs (27.2 kgs)
- Vertical mounting rails adjust from 1 to 16 in. deep
- Locks securely to help prevent damage, tampering or theft
- Preinstalled cooling fan with filter promotes ample airflow
- Fully assembled and ready to mount to wall, floor or table

Package Includes

- SRDVRLB 5U Security DVR Lockbox Enclosure
- (20) M6 screws
- (20) M6 cage nuts
- (20) M6 cup washers
- (6) 10/32 screws
- (6) 10/32 nuts
- (2) Keys
- Owner's manual

Easy Enclosure and Equipment Installation

- Ships fully assembled for quick installation on a wall, floor or tabletop
- Mounting plate's holes spaced 16 in. apart to accommodate standard wall stud placement
- Removable top panel allows easy access to DVR and cables
- Front and rear mounting rails adjust in 1 in. increments from 1 to 16 in. deep
- Rails adjust easily—unscrew them, slide them to desired depth, and screw them back in
- Rails support square-hole mounting
- Rack spaces numbered for easy reference

Meets Payment Card Industry Standards

- Provides physical equipment and media security required for PCI DSS (Payment Card Industry Data Security Standard) compliance

Specifications

OVERVIEW	
UPC Code	037332188229
Device Compatibility	DVR
Rack Type	Enclosure
INPUT	
Nominal Input Voltage(s) Supported	120V AC
Nominal Input Voltage Description	120V 50/60 Hz
Input Plug Features	NEMA 5-15P
Input Cord Length (ft.)	3
Input Cord Length (m)	0.91
PHYSICAL	
Color	Black
Rack Height	5U
Rack Depth	Shallow
Maximum Device Depth (cm)	41.28
Maximum Device Depth (in.)	16.25
Maximum Device Depth (mm)	413
Minimum Device Depth (cm)	2.54
Minimum Device Depth (in.)	1
Minimum Device Depth (mm)	25
Shipping Dimensions (hwd / in.)	13.58 x 22.44 x 28.11
Shipping Dimensions (hwd / cm)	34.49 x 57.00 x 71.40



Powering Business Worldwide



Shipping Weight (lbs.)	34.00
Shipping Weight (kg)	15.42
Unit Dimensions (hwd / in.)	10.000 x 24.300 x 18.400
Unit Dimensions (hwd / cm)	25.40 x 61.72 x 46.74
Unit Weight (lbs.)	28.66
Unit Weight (kg)	13.00
Weight Capacity - Stationary (kg)	27
Weight Capacity - Stationary (lbs.)	60
Number of Vertical Mounting Rails	2
FEATURES & SPECIFICATIONS	
Pre-Installed Casters	No
STANDARDS & COMPLIANCE	
Product Compliance	RoHS
WARRANTY & SUPPORT	
Product Warranty Period (Worldwide)	5-year limited warranty

1000 Eaton Boulevard
 Cleveland, OH 44122
 United States
<https://tripplite.eaton.com>

© 2024 Eaton. All Rights Reserved.
 Eaton is a registered trademark. All other trademarks
 are the property of their respective owners.