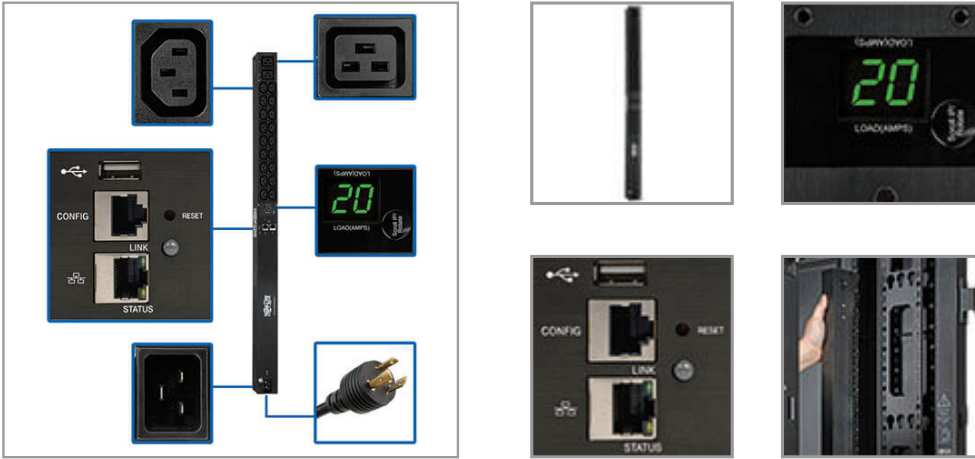


3.7kW Single-Phase 208/230V Monitored PDU - LX Platform, 18 C13, 2 C19 Outlets, C20 / L6-20P Inputs, 0U 900mm Height, TAA

MODEL NUMBER: PDUMNV20HV2LX



3.7kW 0U PDU distributes and monitors single-phase power in an IT or industrial environment. Built-in Java-free network interface helps you remotely monitor load levels to prevent overloads that cause downtime.

Description

The PDUMNV20HV2LX 3.7kW Single-Phase Monitored PDU provides real-time remote monitoring of voltage, frequency and load levels via built-in network connection. By reducing the frequency of on-site visits, these advanced remote capabilities can save you money and reduce downtime. Recommended for your IT or industrial application, the 0U PDU features 20 outlets (18 C13 and 2 C19) with included plug-lock insert sleeves to prevent cables from becoming accidentally disconnected. The C20 inlet is compatible with a wide variety of user-supplied power cords for connecting to an AC source, generator or protected UPS. A detachable 10-ft. (3.05 m) cord with NEMA L6-20P plug is included. The built-in Java-free HTML5-based LX Platform network interface enables full remote access for PDU status monitoring and email notifications via secure web browser, SNMP, telnet or SSH. It supports 10/100 Mbps auto-sensing for optimum communication with an Ethernet network. Optional EnviroSense2 modules (sold separately) provide a variety of environmental monitoring capabilities. Protocols supported include IPv4, IPv6, HTTP, HTTPS, SMTP, SNMPv1, SNMPv2, SNMPv3, telnet, SSH, FTP, DHCP and NTP.

A digital ammeter allows you to monitor the total connected load in real time to ensure it remains well below maximum capacity with no danger of overload. The PDU mounts in 0U of space in EIA-standard 19-inch racks using the included toolless mounting buttons or the included rack-mounting brackets.

Features

Distributes and Monitors Network-Grade AC Power

- 3.3/3.7kW 208/230V 16A monitored rack PDU (rPDU) with single-phase input
- C20 inlet compatible with wide variety of user-supplied power cords
- Detachable 10-ft. (3.05 m) cord with NEMA L6-20P plug included
- Firmware upgrades support future product enhancements

18 C13 and 2 C19 Outlets Distribute AC Power

- Included plug-lock inserts prevent cables from becoming accidentally disconnected

Digital Ammeter

Highlights

- 3.3/3.7kW 208/230V single-phase monitored 90cm 0U PDU
- 20 outlets—18 C13, 2 C19—with plug-lock insert sleeves
- Pre-installed WEBCARDLX with latest version of PADM20 for enhanced remote management
- Digital ammeter for on-site load monitoring in real time
- C20 inlet input with detachable 10-ft. (3.05 m) NEMA L6-20P power cord

Package Includes

- PDUMNV20HV2LX 3.3/3.7kW Single-Phase Monitored PDU
- Built-in LX Platform interface
- Detachable NEMA L6-20P to C19 power cord, 10-ft. (3.05 m)
- Configuration cable
- (20) Plug-lock inserts
- Rack-mounting hardware
- PDUMVROTATEBRKT mounting bracket accessory
- Owner's manual

- Reports total connected equipment load in real time
- Supports IP-address self-ID
- Rotates 180° for easy reading at either angle

Built-In LX Platform Interface

- Pre-installed WEBCARDLX with the latest version of PowerAlert Device Manager firmware (PADM20) provides enhanced remote management capabilities
- PADM20 and PowerAlert Element Manager (PAEM) form a powerful tool for expanding maintenance functions in large installations, including firmware update checks and backup and restoration of device configurations
- Allows full remote access for power monitoring with email notifications via secure web browser, SNMP, telnet or SSH
- Supports 10/100 Mbps auto-sensing for communication with an Ethernet network
- Optional EnviroSense2 modules (sold separately) provide a variety of environmental monitoring capabilities
- No Java required

Broad Communications Compatibility

- Supports IPv4, IPv6, HTTP, HTTPS, SMTP, SNMPv1, SNMPv2, SNMPv3, telnet, SSH, FTP, DHCP and NTP
- Supports automatic and manual assignment of IP address

Essential Safety Features

- Tiered access allows administrator and guest to log in via web browser
- Immediate alert notifications via email or SNMP traps
- Supports user-specified alarm notification thresholds
- Real-time clock backup maintains day/date even if PDU is unpowered

Easy 0U Installation in EIA-Standard 19 in. Racks

- 90cm PDU mounts vertically using included toolless buttons or rack-mounting brackets
- Included PDUMVROTATEBRKT allows mounting with rear-facing outlets

TAA-Compliant

- Compliant with the Federal Trade Agreements Act (TAA) for GSA Schedule purchases

Specifications

OVERVIEW	
UPC Code	037332205346
PDU Type	Monitored
INPUT	
Input Phase	Single-Phase
PDU Input Voltage	208; 230
Recommended Electrical Service	Single-phase 16/20A 230/208V service

Maximum Input Amps	16
Maximum Input Amps Details	Agency de-rated to 16A continuous
Input Connection Type	C20 inlet accepts included L6-20P input cable. Alternate C19 input cordsets supported.
PDU Plug Type	NEMA L6-20P; IEC-320 C20
Input Cord Length (ft.)	10
Input Cord Length (m)	3.05
OUTPUT	
Output Capacity Details	3.7kW (230V), 3.3kW (208V) / 16A total capacity; 16A max per C19 outlet; 12A (10A CE) max per C13 outlet
Frequency Compatibility	50 / 60 Hz
Output Receptacles	(18) C13; (2) C19
Output Nominal Voltage	208/230V
USER INTERFACE, ALERTS & CONTROLS	
Front Panel LCD Display	Digital meter reports PDU output current in amps, Scroll IP-address information; Display can be rotated 180 degrees for installation with the input cable at the top
Switches	Press the SCROLL IP / ROTATE button and release after one second to display the configured IP address in 2 digit intervals; Press and release after two seconds to rotate the display 180 degrees
SURGE / NOISE SUPPRESSION	
Automatic Shut-Off	No
PHYSICAL	
Material of Construction	Metal
Rack Height	0U
Form Factors Supported	0U vertical rackmount installation supported with included mounting brackets; supports toolless mounting in button-mount compatible racks
PDU Form Factor	Vertical (0U)
Shipping Dimensions (hwd / in.)	42.00 x 6.20 x 4.50
Shipping Dimensions (hwd / cm)	106.68 x 15.75 x 11.43
Shipping Weight (lbs.)	11.50
Shipping Weight (kg)	5.22
Unit Dimensions (hwd / in.)	35.500 x 2.200 x 1.850
Unit Dimensions (hwd / cm)	90,2 5,6 4,7
Unit Weight (lbs.)	6.5
Unit Weight (kg)	2.95
ENVIRONMENTAL	
Operating Temperature Range	32° to 104°F (0° to 40°C)
Storage Temperature Range	-22° to 140°F (-30° to 60°C)



Powering Business Worldwide



Relative Humidity	5% to 95% non-condensing
Operating Elevation	0-10000 ft. (0-3000 m)
COMMUNICATIONS	
PowerAlert Software	LX Platform Interface: PowerAlert Device Manager
Communications Cable	RJ45-to-DB9 configuration/console Access cable
SNMP Compatibility	Pre-installed LX platform interface provides remote monitoring via Java-free HTML5 web interface, telnet, SSH and SNMP management systems
Network Compatibility	10 Mbps; 100 Mbps (Fast Ethernet)
FEATURES & SPECIFICATIONS	
High Availability PDU Features	Remote Network Notifications
STANDARDS & COMPLIANCE	
Product Certifications	EN 55022; EN 55024; CAN/CSA-C22.2 No. 60950-1 (Canada); IEC 60950-1; NOM (Mexico); UL 60950-1
Product Compliance	RoHS; FCC Part 15 Class A (USA); Trade Agreements Act (TAA)
WARRANTY & SUPPORT	
Product Warranty Period (Worldwide)	2-year limited warranty

1000 Eaton Boulevard
 Cleveland, OH 44122
 United States
<https://tripplite.eaton.com>

© 2024 Eaton. All Rights Reserved.
 Eaton is a registered trademark. All other trademarks
 are the property of their respective owners.