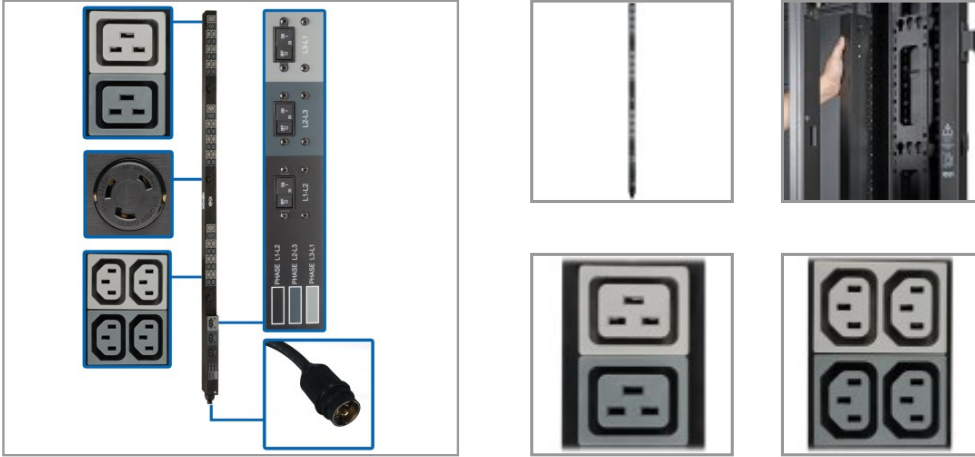


# 14.4kW 208V 3-Phase Basic PDU - 45 Outlets (36 C13, 3 C19, 3 L6-30R), Hubbell 50A CS8365C Input, 6 ft. Cord, 70 in. 0U, TAA

MODEL NUMBER: PDU3V6H50A



Delivers 208V 3-phase AC power to multiple loads from a utility outlet, generator or UPS system in a data center or network closet.

## Features

### 3-Phase 208V PDU Distributes Network-Grade Power to Multiple Loads

This basic PDU is an ideal no-frills unit for networking, telecom, security, audio/video and sound reinforcement applications. Recommended for small to mid-sized data centers, computer rooms and network closets, the PDU3V6H50A features 36 C13, six C19 and three NEMA L6-30R outlets in three breakered single-phase output load banks for connecting equipment. A six-foot (1.8-meter) cord with Hubbell 50A CS8365C (3P+E) 3-phase input plug connects to your facility's AC power source, generator or protected UPS system to distribute power to connected loads.

### Easy to Install Vertically in an EIA-Standard 19 in. Rack

The 70-inch 0U rack PDU (rPDU) all-metal housing mounts vertically using the pre-installed toolless mounting buttons or the included brackets. Spare buttons are also included. Use the included PDUMVROTATEBRKT kit to install the PDU with outlets facing the rear for better airflow or equipment access. Cable retention brackets keep power cords organized and your rack free of clutter. The PDU's switchless design helps prevent an accidental shutdown, which could lead to costly downtime.

### TAA-Compliant for GSA Schedule Purchases

The PDU3V6H50A is compliant with the Federal Trade Agreements Act (TAA), which makes it eligible for GSA (General Services Administration) Schedule and other federal procurement contracts.

## Specifications

OVERVIEW	
UPC Code	037332255716
PDU Type	Basic
INPUT	

## Highlights

- Ideal no-frills PDU for telecom, security, audio/video and other network applications
- 36 C13, 6 C19 and 3 L6-30R 208V outlets distribute AC power to connected equipment
- Switchless design helps prevent accidental shutdowns that can lead to costly downtime
- 6 ft. power cord with Hubbell 50A CS8365C 3-phase input connects to AC source
- Compliant with the Federal Trade Agreements Act (TAA) for GSA Schedule purchases

## Package Includes

- PDU3V6H50A 14.4kW 208V 3-Phase Basic PDU
- Cable retention brackets with installation hardware
- Rack-mounting hardware
- Owner's manual



Powering Business Worldwide

**TRIPP-LITE**  
by **EAT•N**

Input Phase	3-Phase
PDU Input Voltage	208
Recommended Electrical Service	Three-phase 50A 208V service
Maximum Input Amps	40
Maximum Input Amps Details	Agency de-rated to 40A continuous
PDU Plug Type	HUBBELL CS8365C 50A
Input Cord Length (ft.)	6
Input Cord Length (m)	1.83
<b>OUTPUT</b>	
Output Capacity Details	14.4kW (208V) total capacity; 20A max output phases L2-L3 & L3-L1; 30A max output phase L1-L2; 24A max per L6-30R outlet; 16A max per C19 outlet; 12A max per C13 outlet
Frequency Compatibility	50 / 60 Hz
Output Receptacles	(36) C13; (6) C19; (3) L6-30R
Output Nominal Voltage	208V
Overload Protection	Three circuit breakers protect each outlet bank (30A: L1-L2; 20A: L2-L3; 20A: L3-L1)
<b>SURGE / NOISE SUPPRESSION</b>	
Automatic Shut-Off	No
<b>PHYSICAL</b>	
Material of Construction	Metal
Rack Height	0U
Form Factors Supported	Vertical rackmount installation supported with included mounting brackets; supports toolless mounting in button-mount compatible racks
PDU Form Factor	Vertical (0U)
Shipping Dimensions (hwd / in.)	6.10 x 10.00 x 77.50
Shipping Weight (kg)	10.02
Unit Dimensions (hwd / in.)	70.000 x 2.200 x 2.650
Unit Dimensions (hwd / cm)	177.8 x 6.7 x 4.39
Unit Weight (lbs.)	14.5
Unit Weight (kg)	6.58
<b>ENVIRONMENTAL</b>	
Operating Temperature Range	32° to 104°F (0° to 40°C)
Storage Temperature Range	-22° to 140°F (-30° to 60°C)
Relative Humidity	5% to 95% non-condensing
Operating Elevation	0-10000 ft. (0-3000 m)

STANDARDS & COMPLIANCE	
Product Certifications	RETIE (Colombia); CAN/CSA-C22.2 No. 62368-1 (Canada); NOM (Mexico); UL 62368-1
Product Compliance	RoHS; Trade Agreements Act (TAA)
WARRANTY & SUPPORT	
Product Warranty Period (Worldwide)	2-year limited warranty

1000 Eaton Boulevard  
Cleveland, OH 44122  
United States  
<https://tripplite.eaton.com>

© 2024 Eaton. All Rights Reserved.  
Eaton is a registered trademark. All other trademarks  
are the property of their respective owners.