

## ZM-9014

### REMOTE CONTROL PANEL



Designed for exclusive use with the 9000M2 Series or M-864D, the ZM-9014 is a wall mounted remote control panel having 4 buttons and 1 volume control knob. It is used in conjunction with the RC-001T Remote control module or M-864D. It can be mounted in a standard 2-gang electrical box in the wall.

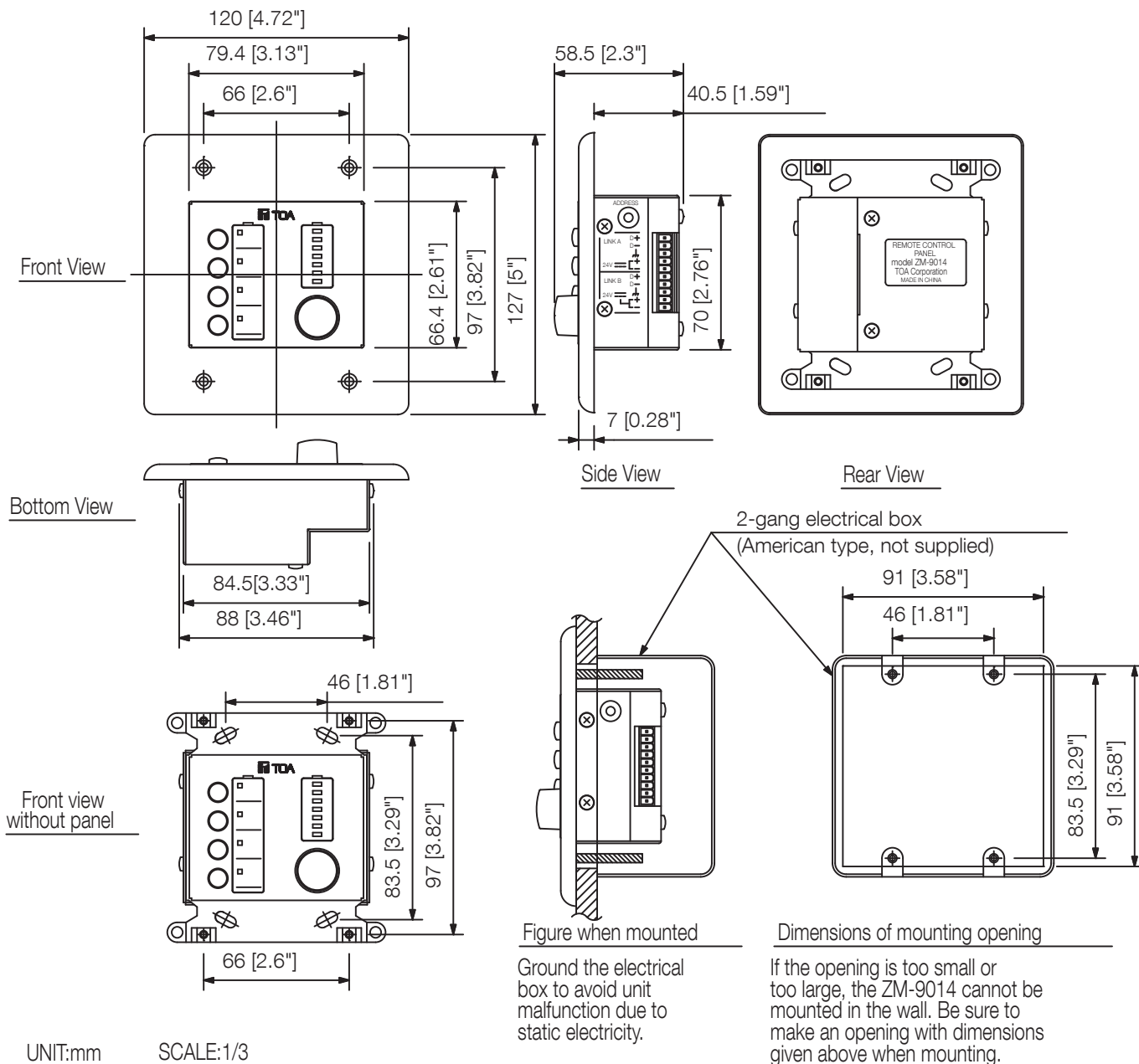
### Key features

- 4 assignable buttons with LED status indicator for Xpoint settings (on/off, select), paging activation, scene, relay activation
- Assignable ID rotary adjustment on box

## Specifications

Power Source	24 V DC (supplied from RC-001T or M-864D)
Current Consumption	50 mA or less
Control	4 function buttons, 1 volume control
Indicator	4 function indicators (green LEDs), Level indicators (green LEDs)
Cable Requirements	Shielded CPEV cable (paired data line and paired power line) or Category 5 twisted pair cable for LAN (CAT5-STP)
Terminal	Removable terminal block (10 pins)
Operating Temperature	0 °C to +40 °C (32 °F to 104 °F)
Operating Humidity	35 % to 80 %RH (no condensation)
Finish	Surface-treated steel plate, white, paint
Dimensions	120 (W) x 127 (H) x 58.5 (D) mm (4.72 x 5" x 2.3")
Weight	374 g (0.82 lb)
Included Accessories	Box mounting screw (No.6-32UNC x 30) ...4, Box mounting screw (M4 x 30) ...4, Panel mounting screw ...4, Removable terminal plug (10 pins) ...1

## Dimensions



## A&E specifications

Bi-directional remote control unit for the full digital mixer M-9000M2. Four programmable buttons for retrieving by default, volume settings, or the choice of signal sources and end easy slider to adjust the volume of any group of channels. Each button has an LED to indicate the current status. A seven-digit LED display shows the current volume level. Simple flush-mounted installation.

Height: 12,7 cm

Depth: 5,6 cm

Width: 12 cm