

## ZM-9002

### ZONE MANAGER



The ZM-9002 is a remote control switch/volume panel used with the 9000 series amplifiers. It adds 4 amplifier control inputs and 1 remote volume control, and can be mounted in a standard 1-gang electrical box in the wall.

### Key features

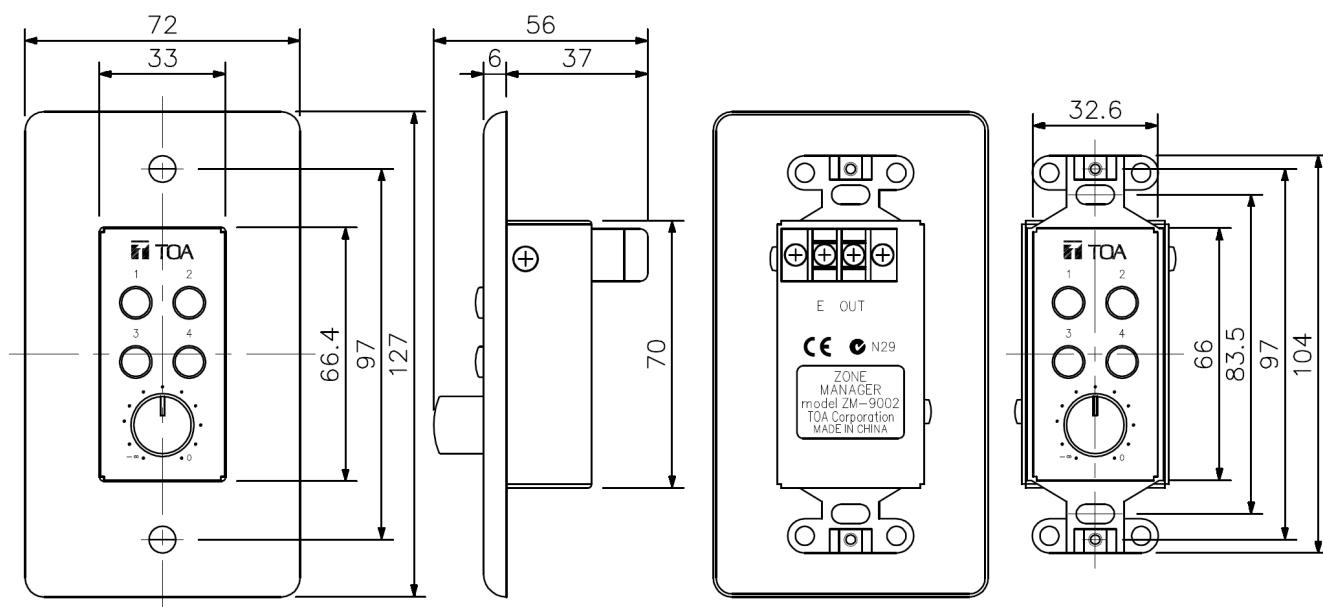
- 4 buttons to activate preset selection or volume up/down
- Volume control knob
- Wiring: single conductor shielded cable
- Max. loop resistance: 50  $\Omega$  per line
- Mounting in one gang electrical box
- Maximum 2 remote panels per chassis

## Specifications

|                       |                                                                                                            |
|-----------------------|------------------------------------------------------------------------------------------------------------|
| Line Resistance       | 50 $\Omega$ or less (per line)                                                                             |
| Cable Requirements    | Single conductor shielded cable                                                                            |
| Terminal              | M3 screw terminal, distance between barriers: 7.62 mm                                                      |
| Operating Temperature | -10 °C to +40 °C (14 °F to 104 °F)                                                                         |
| Finish                | Surface-treated steel plate, white, paint                                                                  |
| Dimensions            | 72 (W) x 127 (H) x 56 (D) mm                                                                               |
| Weight                | 170 g                                                                                                      |
| Included Accessories  | Box mounting screw (No.6-32UNC x 30) ...2,<br>Box mounting screw (M4 x 30) ...2, Panel mounting screw ...2 |

Note: Since no electrical box is supplied with the unit, prepare it separately.

## Dimensions

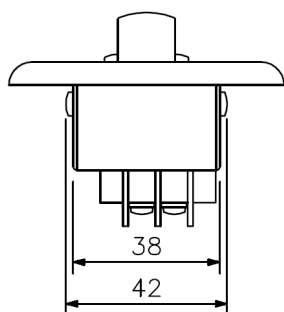


Front View

Side View

Rear View

Front View without panel



Bottom View

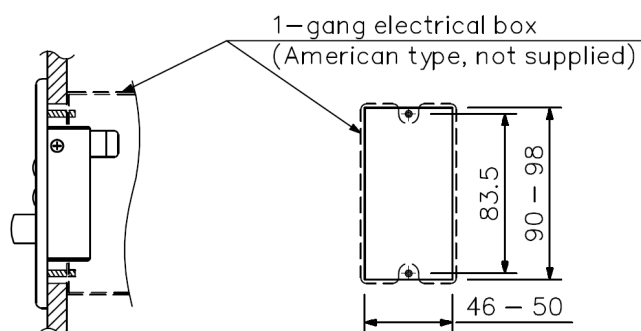


Figure when mounted

Dimensions of mounting opening

If the opening is too small or too large, the ZM-9002 cannot be mounted in the wall. Be sure to make an opening with dimensions given above when mounting.

UNIT:mm

## A&E specifications

Remote control unit for fully digital mixer M-9000. Four programmable buttons for retrieving by default, volume settings, or the choice of signal sources. Volume control for inputs or outputs. Wiring with single conductor shielded cable. Simple flush-mounted installation.

Height: 12,7 cm

Depth: 5,6 cm

Width: 7,2 cm