

TS-910 US

CENTRAL UNIT



The TS-910 is a Central unit of the Integrated conference system designed for use with both the Wired and Infrared conference units in combination. Connecting to the Expansion unit and Infrared Transmitter/Receiver unit, the TS-910 can control the conference units. Up to 192 Wired and Infrared Conference units in total can be used per system. The incorporated Feedback suppressor (FBS) function helps to effectively suppress acoustic feedback. External control, voting result confirmation, and equipment installation confirmation can be performed on a PC.

Also, 2 channels of audio signal lines are provided for base language and translation language. With the use of an optional rack mounting bracket, it can be mounted in an EIA Standard equipment rack (4 unit size).

Key features

- Safe and secure wireless technology
- Good coverage
- Speeches can be addressed to audience via externally interlinked sound reinforcement system
- Threefold choice vote function for instantaneous voting and including totalisator
- Up to 192 chairman/delegate units per system
- All speeches during the conference can be recorded
- Auto Mic-Off function to prevent inadvertent microphone shutoff failure
- Speaker restriction function

Specifications

* 0 dB = 1 V

Power Source	100 - 240 V AC, 50/60 Hz (use of the supplied AC adapter)
Power Consumption	72 W
Current Consumption	Max. 3 A DC (when 24 V DC is supplied from the accessory AC adapter)
Input	MIC 1 (Base Language): -60 dB*, 600 Ω, unbalanced, Ø6.3 mm phone jack (2P) MIC 2 (Translation Language): -60 dB*, 600 Ω, unbalanced, Ø6.3 mm phone jack (2P) AUX 1 (Base Language): -20 dB*, 10 kΩ, unbalanced, Ø6.3 mm phone jack (2P) AUX 2 (Translation Language): -20 dB*, 10 kΩ, unbalanced, Ø6.3 mm phone jack (2P) AUX 3 (Base and Translation Language): -20 dB*, 10 kΩ, unbalanced, Ø6.3 mm phone jack (2P)
Output	LINE: -20 dB*, 10 kΩ, unbalanced, Ø6.3 mm phone jack (2P) REC: -20 dB*, 10 kΩ, unbalanced, Ø6.3 mm phone jack (2P), RCA pin jack HEADPHONES: Ø3.5 mm mini jack (3P:monaural)
Equalizer Input/Output Terminal	Input: -20 dB*, 10 kΩ, unbalanced, RCA pin jack Output: -20 dB*, 10 kΩ, unbalanced, RCA pin jack
LED Indicator	Voting result indicators 1 - 3 (7-segment LED, 3 digits), Audio signal receiving indicators 1 - 4 CH, Data signal receiving indicator, External control priority indicator, External control communication indicator, Battery indicator (Flashes in case of battery warning of Infrared Conference unit), Short-circuit indicator
Number of Connectable Conference Units	192 units
Number of Connectable Infrared Transmitter/Receiver Units	Up to 4 units (with the use of distributor, up to 16 units connectable when they are all TS-905, and up to 12 units when they are all TS-907, or TS-905 and TS-907 are used in combination)
Infrared Transmitter/Receiver I/O Terminal	BNC jack
Number of Connectable Expansion Units	4 units (Up to 8 units connectable when using a distributor)
External Control Connection Terminal	D-sub connector (9P, male)/USB-B selectable
Function Switch	Simultaneous speaker No. setting switch: 1/2/3/4 Mic-off setting switch: TIME OUT ON/OFF Speech priority selector switch: A/B/C (A: First-in-first-out priority, B: Last-in-first-out priority, C: Fixed for the first unit, and last-in-first-out for the subsequent units) FBS selector switch: External equalizer/OFF/FBS AUTO/FBS MANUAL
Operating Temperature	0 °C to +40 °C (32 °F to 104 °F)
Operating Humidity	90 %RH or less (no condensation)
Finish	Panel: Surface-treated steel plate, gray metallic, paint, semi-gloss
Weight	2.8 kg (6.17 lb)
Included Accessories	AC adapter (Cord length: 1.8 m (5.91 ft) DC cord, and 2 m (6.56 ft) detachable AC cord)...1
Optional Accessories	Rack mounting bracket: MB-TS900

Dimensions

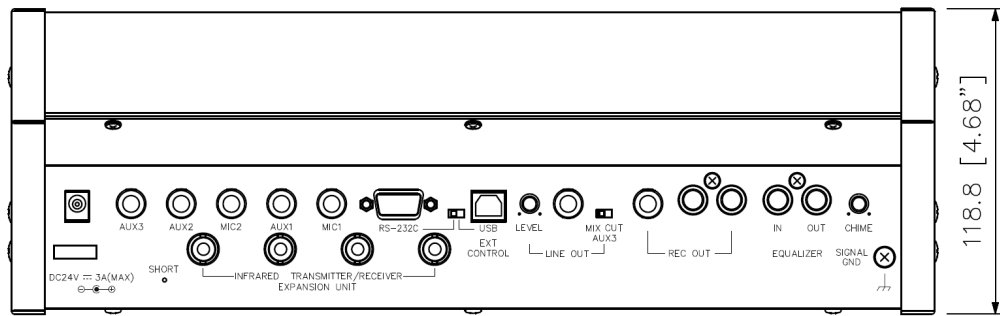


Figure as viewed from point A

359 [14.13"]

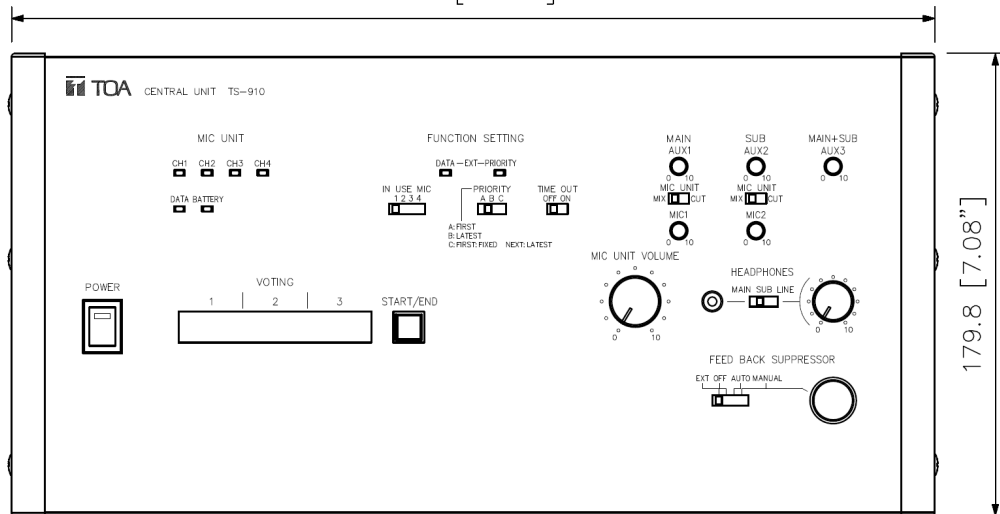


Figure as viewed from point B

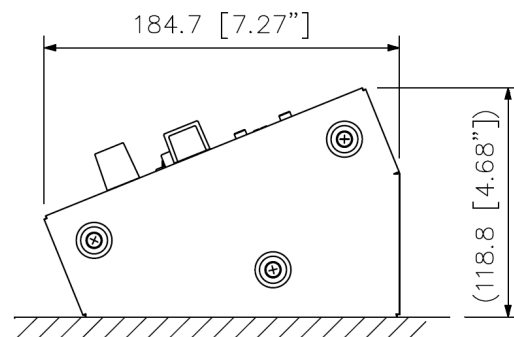
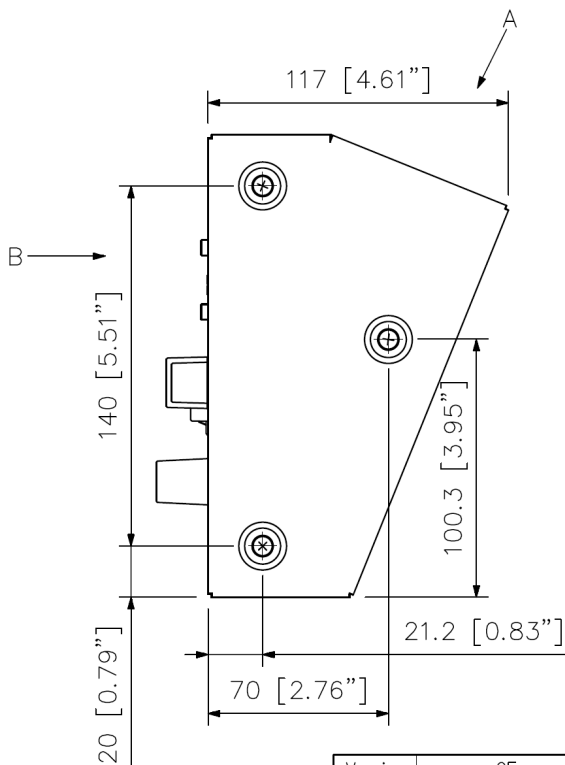


Figure of the unit installed

Version	CE	CE-AU	CE-GB	CN	US
AC plug					

A&E specifications

The Central Unit shall be able to configure a conference system with a total of up to 192 conference units. Wired Conference units or Infrared Conference units shall be freely selectable depending on application or event requirements.

The Central Unit shall include the following functionality: "Speaker Restriction Function" which prevents interruptions. The number of conference units can be preset for the authorized number of speakers at a time. One to four persons can be allowed to talk at any one time to prevent the confusion that could result from several participants all speaking at once. "Speech system selection function" sets speech when Talk keys on the conference units are activated exceeding the set number of authorized speakers, microphone ON/OFF operation can be set to any of the following: first-in-first-out, last-in-first-out, or last-in-first-out after 2nd unit (the microphone stays ON for the unit whose Talk key was first pressed). "Auto Mic-Off function" prevents inadvertently leaving the microphone on. With this function ON, the microphone will automatically switch itself off after a 30-second period of silence after the Talk key was pressed. "Installation status checkup function" for the at-a-glance confirmation of communication. If activated on the Central unit, the microphone indicators in the Chairperson / Delegate units light up. Voting function that computes and displays the voting result. Since two speech outputs are provided (Main and Sub channels), it is ideal for use in simultaneous interpreting conference. With the use of an optional rack mounting bracket, it can be mouted in an EIA standard equipment rack (4 unit size).

The Central Unit shall provide: (2) external microphone input (600 ohms, -60 dBV, unbalanced, phone jack). (3) auxiliary input (10k ohms, -20 dBV, unbalanced, phone jack). Auxiliary outputs: (1) Line (10k ohms, -20 dBV, unbalanced, phone jack). (1) Record (10k ohms, -20 dBV, unbalanced, phone jack, RCA jack). (1) Headphone mini jack and (4)Infrared transmitter/receiver and Expansion unit I/O Terminal, BNC jacks. (2) External Control Terminal (D-sub connector 9P, male/USB-B selectable). The Central Unit shall incorporate Feedback suppressor function to effectively suppress acoustic feedback. External equalizer shall be connectable to the Central Unit.

Speech volume control adjusts the microphone volume of the Chairperson unit and Delegate unit shall be located on the front panel. Priority chime volume control adjusts the output volume of the chime tone that sounds when the Priority Speech key on the Central Unit is pressed which shall be located on the rear panel. Power requirement shall be 100-240 VAC, 50/60 Hz, maximum 72 W power consumption (using the provided AC Power Supply) and the operating temperature range shall be 0° C to 40° C (32° F to 104° F). The Central Unit shall weigh 2.8 kg. (6.17 lbs) and be constructed of surface-treated steel plate with gray metallic paint, semi-gloss finish with dimensions (W x H x D) of 359 x 118.8 x 138.2 mm (14.13" x 4.68" x 5.44").