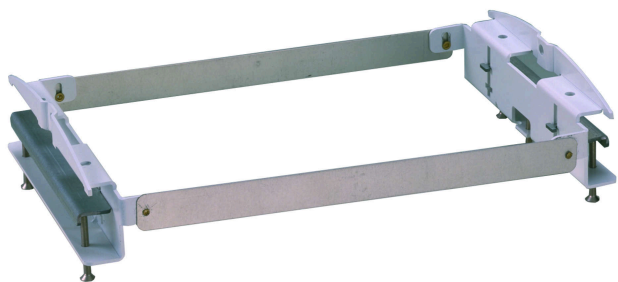


SP-420

SPEAKER BRACKET



The SP-420 is a bracket designed to exclusively mount the BS-1030W Universal Speaker in a wall or ceiling. The bracket can be easily mounted to the surface made of the plaster board or plywood. Make a 175 x 260 mm hole (tolerance: ± 3 mm) in the wall or ceiling before mounting.

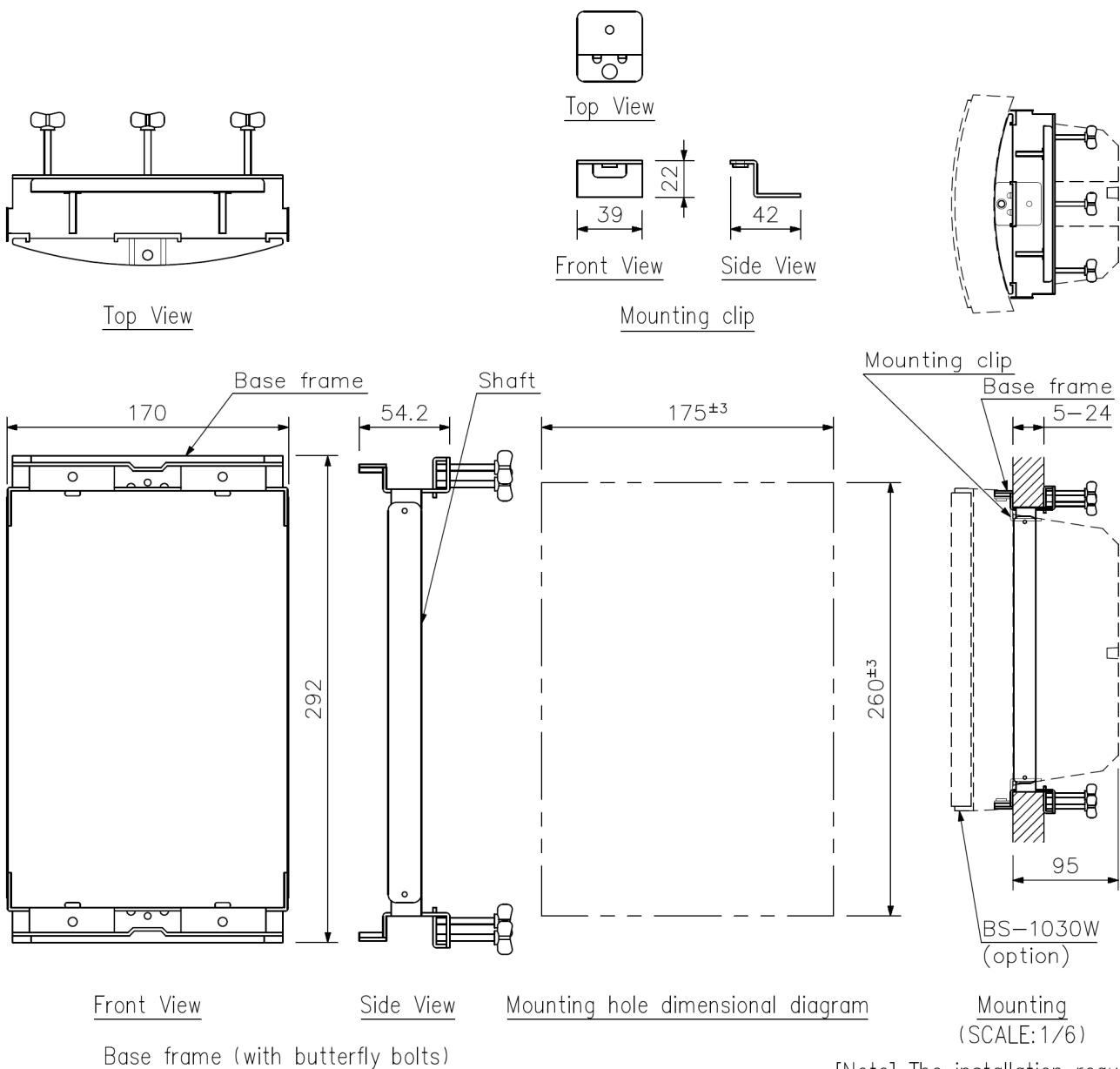
Key features

- Designed to exclusively mount the BS-1030W in a wall or ceiling
- Can be easily mounted to the surface made of the plaster board or plywood
- Finish: Base bracket: Surface treated steel plate, white paint / Shaft and Mounting clip: Nickel plated rolled steel plate

Specifications

Board Thickness Requirement	5 - 24 mm
Finish	Base bracket: Surface treated steel plate, 2.0 mm in thickness, white, paint Shaft: Nickel-plated rolled steel plate, 0.5 mm in thickness Mounting clip: Nickel-plated rolled steel plate, 2.0 mm in thickness
Included Accessories	Mounting clip screw.....2, Plain washer for mounting clip.....2, Speaker fixing screw.....2, Speaker fixing plain washer.....2, Base frame fixing butterfly bolt.....6 (installed in the base frame)

Dimensions



[Note] The installation requires a space of at least 95 mm from the ceiling or wall surface.

UNIT: mm

A&E specifications

Mounting frame for the installation of BS-1030W series loudspeakers in cavity wall or false ceilings