

## N-8050DS

### DOOR STATION



Designed to connect to the IP Intercom Exchange, the N-8050DS is a door station featuring high quality hands-free conversation. It has a contact output (momentarily closed) to remotely control an electronic door lock. It is in full conformity with IP54 water-proof and dust-proof standards. The operating temperature range is -10 to 50°C. As provided with guard nets inside to cover over the openings of microphone and speaker, the N-8050DS can be installed free from care in public space.

### Key features

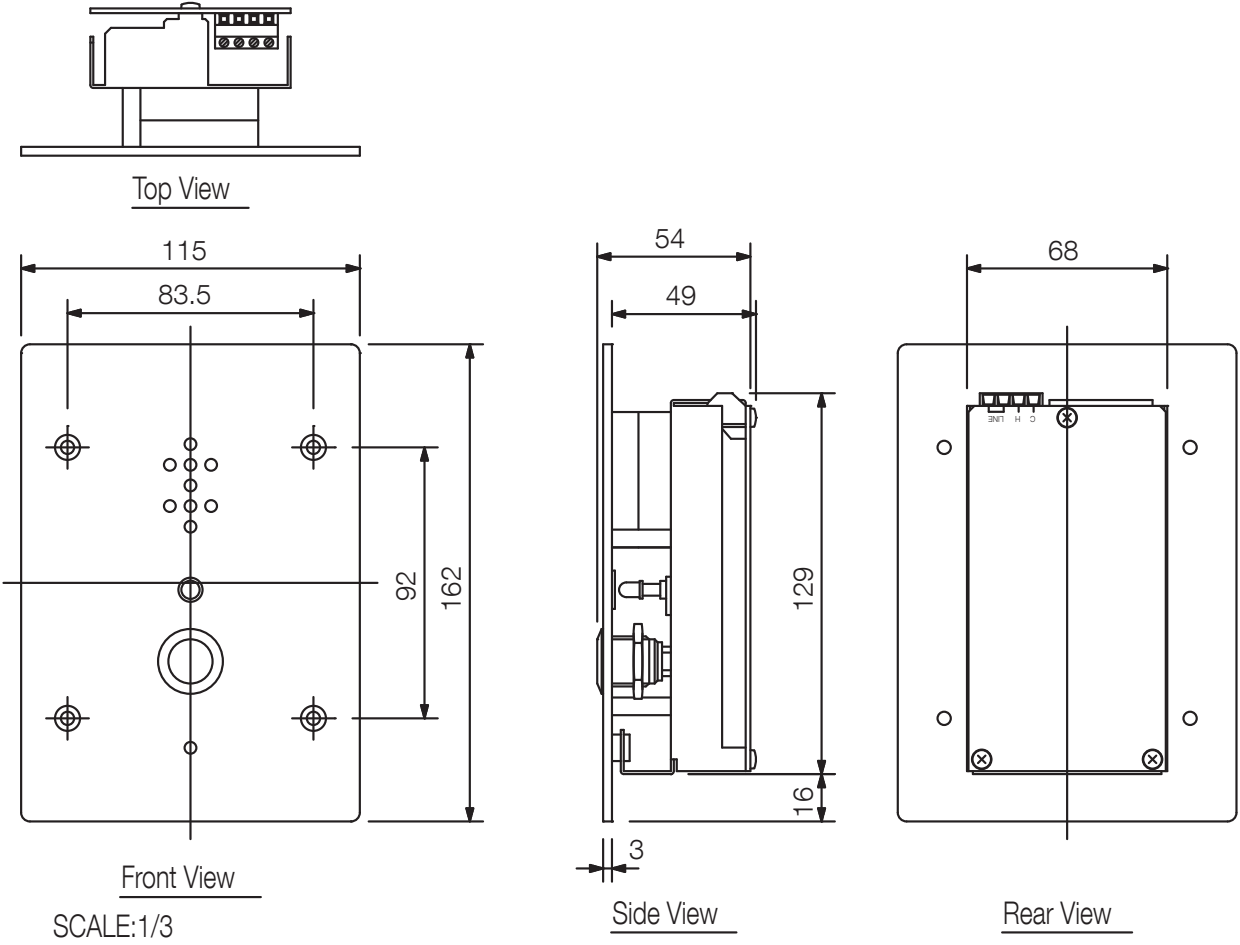
- For indoor / outdoor use
- Hands-free conversation
- Contact output
- Status LED

## Specifications

\* 0 dB = 1 V

Power Source	48 V DC (supplied from the IP intercom exchange (option))
Power Consumption	1.8 W (at rated), 2.4 W (max.)
Wiring Method	1 set of twisted pair cable
Transmission System	2 wire 160 kbps echo canceller transmission system
Signal Level	0 dB* or less
Speech Method	Hands-free conversation
Audio Frequency Range	300 Hz - 7 kHz
Transmission Range	Max. 1500 m (#0.65 mm. Loop resistance 170 Ω)
Hands-free	Speaker: 3.5 cm cone-type, 1 W, 8 Ω Microphone: Omni-directional electret condenser microphone
Control Output	Open collector output, withstand voltage: Max. 30 V DC, control current: Max. 50 mA, one shot: can be set from 1 to 9 s, screw terminal (polarized)
Indicator	Status lamp
Line Connecting Terminal	2 wire, screw terminal (non-polar)
Installation Method	Flush-mount/Surface-mount
Operating Temperature	-10 °C to +50 °C (14 °F to 122 °F)
Operating Humidity	90 %RH or less (no condensation)
Housing Protection	BS EN62262: 2002: IK02 equivalent
Dust/Water Protection	IP54 (Note that panel edges must be sealed at installation.)
Finish	Plate: Stainless steel (SUS304), hairline Call button: Metal
Dimensions	115 (W) x 162 (H) x 54 (D) mm
Weight	680 g
Included Accessories	Box mounting screw (No.6-32UNC x 18) ...4, Box mounting screw (M4 x 25) ...4, Acoustic absorbent (made of felt) ...1
Compatible Box	For flush mount: 3-gang electrical box or Back Box YC-150

# Dimensions



UNIT:mm

SCALE:1/3

## A&E specifications

Input / building door intercom with speakerphone with echo cancellation, wall-mount, 1 call button, control output (E.g. the door open), dust and water protection: IP54, extended working temperature range