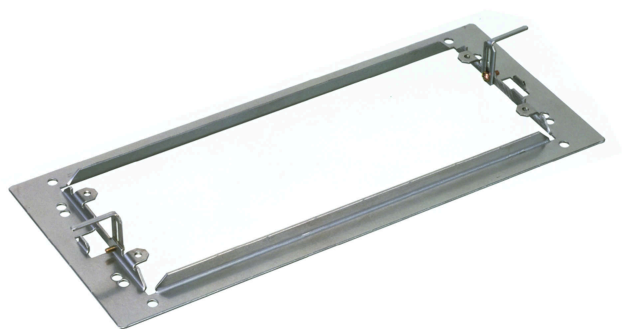


HY-H1

ADAPTER PANEL



The HY-H1 is an optional adapter frame for the H-1 speaker.

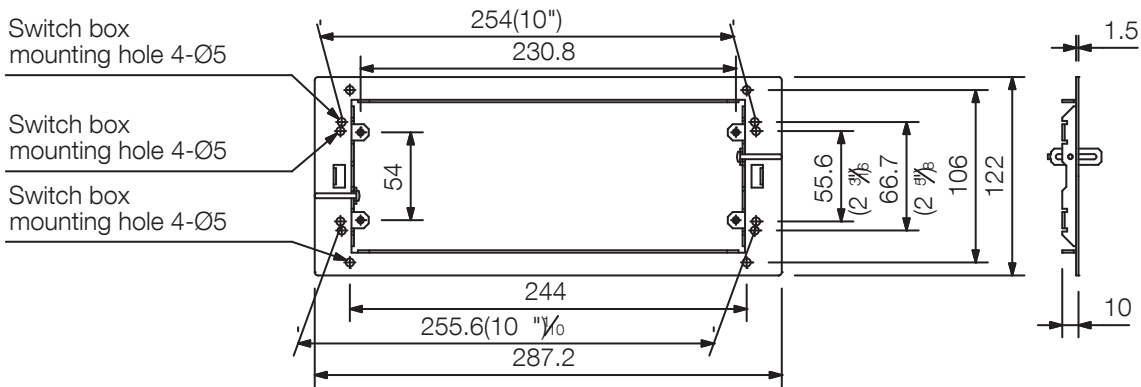
Key features

Specifications

Compatible Speaker	H-1
Finish	Stainless steel
Dimensions	287.2 (W) x 122 (H) x 10 (D) mm
Weight	210 g

[Note] The adapter frame is also supplied with the H-1 speaker.

Dimensions



Front View

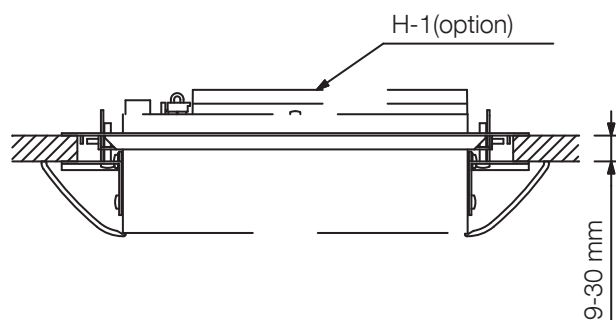
Side View



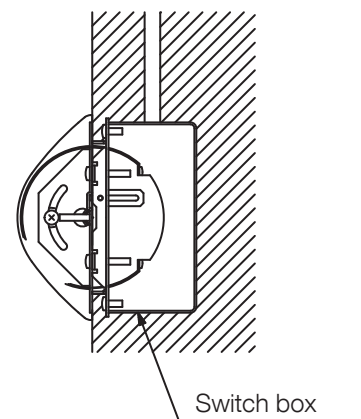
Side View



Mounting hole dimensional diagram



Installation example



Installation example

UNIT:mm

SCALE:1/5