

## HY-F05W

### ADAPTER PLATE



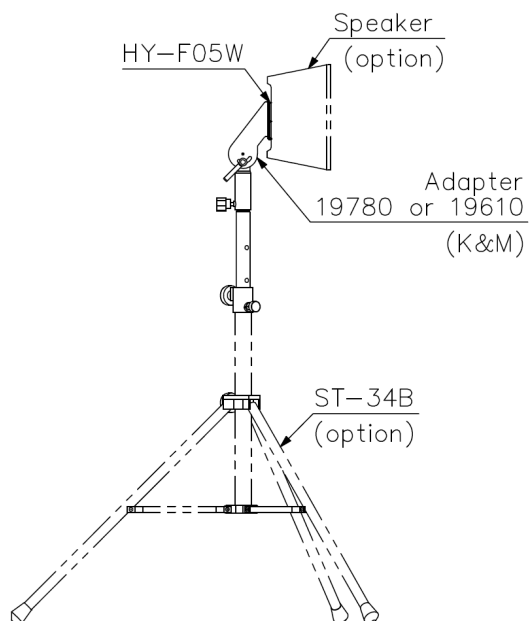
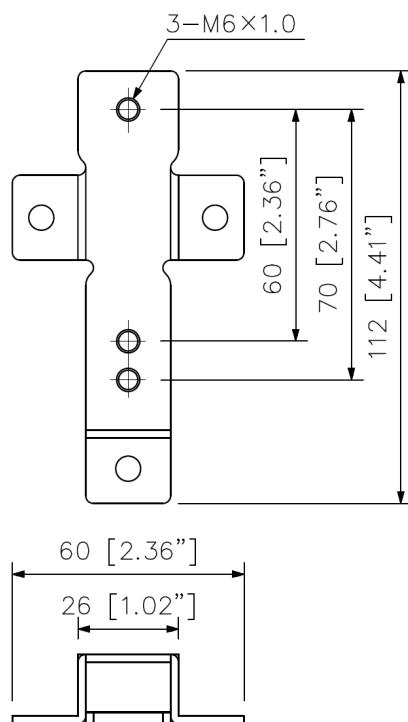
HY-F05W is a mounting bracket accessory designed for installation of F-05 series speaker systems using optional mounting hardware.

### Key features

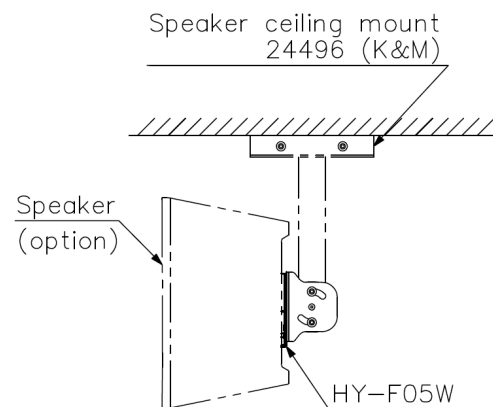
## Specifications

Compatible Speaker	F-05WT
Finish	Steel plate, white (RAL 9016 equivalent), paint
Dimensions	60 (W) x 112 (H) x 18 (D) mm (2.36" x 4.41" x 0.71")
Weight	90 g (0.2 lb)
Included Accessories	Speaker mounting bolt x 1 set

## Dimensions



Stand mounting example



Ceiling mount example

UNIT:mm

Note: K&M's 24359 Adapter panel is required for horizontal installation.