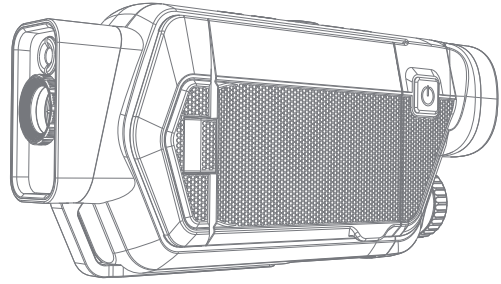


TESLONG

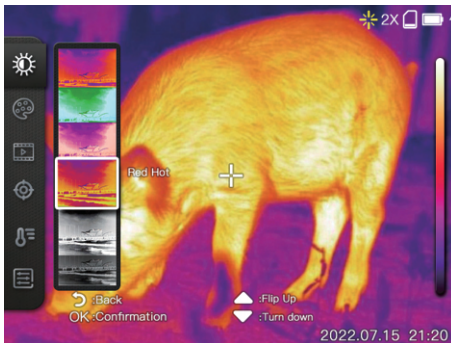
Thermal Monocular User Manual



Model No. TTS300

Color Palettes

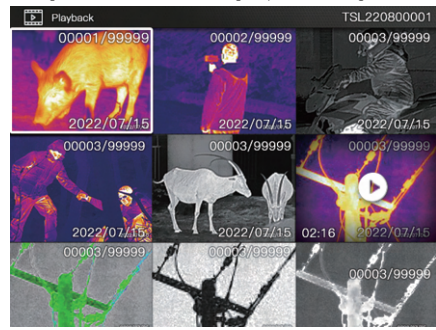
You can select different palettes to display the same scene in different effects



Iron		In the high-temperature region, red has a large proportion, which is suitable for detecting the scenario where the high-temperature region occupies the main proportion
White hot		The high-temperature section adopts white, and the full screen mainly adopts black-and-white transition, which is suitable for users of black-and-white traditional mode
Black hot		The high-temperature section adopts black, and the full screen mainly adopts black-and-white transition, which is suitable for users of black-and-white traditional mode
Rainbow		Red is used for displaying the maximum temperature, yellow is used for displaying the medium temperature, and blue and black are used for displaying the low temperature, which is suitable for scenarios with distinct colors of high and low temperature
Red heat		The main colors are red and black, and from the minimum temperature to the maximum temperature, the black, white and red transition mode is adopted, which is suitable for scenarios focusing on the high temperature state
Cold blue		Blue is used to mark the colder regions, which is more suitable for observing low-temperature target objects

Album

All photos and videos taken by the can be conveniently viewed by clicking [Album]. The interface of the gallery is shown in Figure.



Temperature Tracking

Click the temperature tracking button on the right to enable or disable the measurement of the maximum temperature, minimum temperature and center point temperature in the real-time screen. Red is the maximum temperature, blue is the minimum temperature, and White is the center point temperature. Click to turn on temperature tracking, and click again to turn it off.



SAFETY SUMMARY

- Read and follow all instructions
 - Read all warnings
 - Only use the attachments/accessories specified by the manufacturer. All service must be provided by the manufacturer
- WARNINGS AND CAUTIONS:**
- All electronic operation should be in strict compliance with the electronicsafety regulations, fire prevention regulations and other related regulations in your local region.
 - Please use the power adapter, which is provided by a proven manufacturer. The power consumption cannot be less than the required value.
 - Do not connect several devices to one power adapter as adapter overload may cause over-heat or fire hazard.
 - Do not drop the device or subject it to physical shock, and do not expose it to high electromagnetic radiation. Avoid the device installation on vibrations surface or places subject to shock (ignorance can cause equipment damage)
 - Make sure the running environment meets the requirement of the device. The operating temperature shall be -20°C to 55°C (-4°F to 131°F), and the operating humidity shall be 95% or less.
 - Do not place the device in extremely hot (refer to the specification of the device for the detailed operating temperature), cold, dusty or damp locations and do not expose it to high electromagnetic radiation.
 - The device cover for indoor use should be kept from rain and moisture.
 - Exposing the device to direct sun light, low ventilation or heat source such as heater or radiator is forbidden (ignorance can cause fire danger).
 - Do not aim the device at the sun or extra bright places. A blooming or smear may occur otherwise (which is not a malfunction however), and affecting the endurance of sensor at the same time.

- The built-in battery cannot be dismantled. Please contact the manufacturer for repair if necessary.
- For long-term storage of the battery, make sure you fully charge it every 6 months, to ensure the battery quality. Otherwise, you may damage the battery.

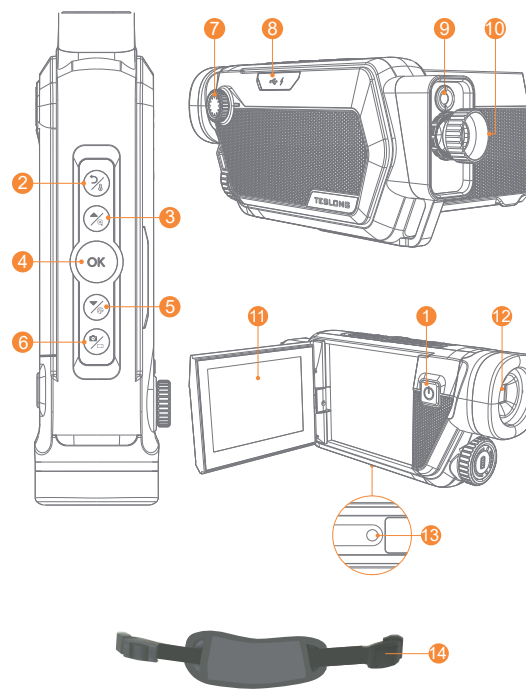
NOTES:

The detector spectral band provides better visibility through smoke, dust, strain, smog, etc. Infrared radiation does not travel through glass. As a result, the monocular does not detect objects if they are behind glass windows or other barriers.

EMERGENCY:

If smoke, odor, or noise arises from the device, immediately turn off the power, unplug the power cable, and contact the service center.

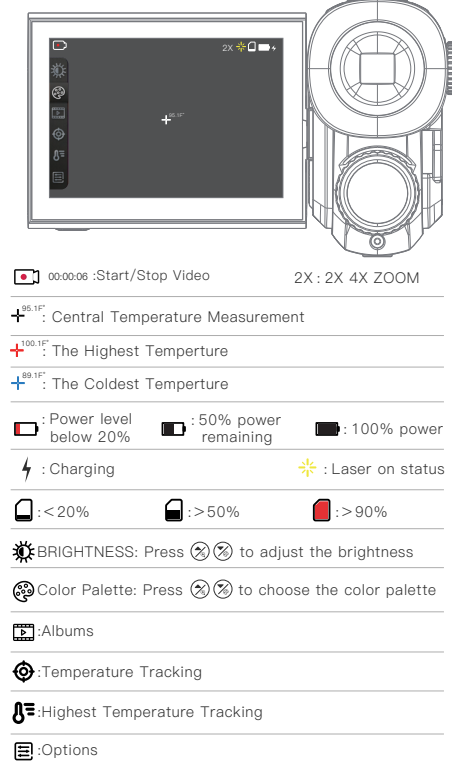
Components and Controls



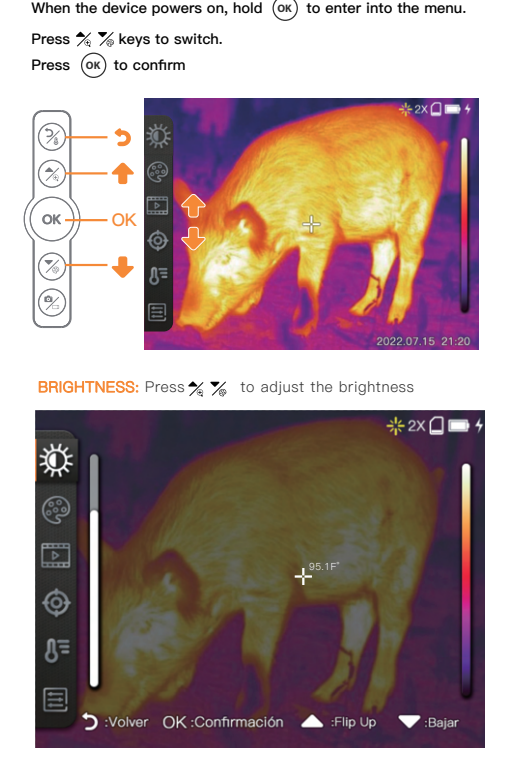
Button Operation

Button	Functions
1	Press Press: Turn on/off the laser pointer while the device is on Hold: Power on/off
2	Return/ Temperature Menu Navigation: Return to the last menu or quite the Menu Mode Preview Mode: Start/Stop Temperature
3	Up/ Zoom Menu Navigation: Move Up Preview Mode: Digital Zoom x1/2/x4
4	OK Menu Navigation: Enter into the next menu or Confirm Preview Mode: Enter into the Menu Navigation
5	Down/ Palette Menu Navigation: Move Down Preview Mode: Color Palette Setting
6	Photo/ Video Press: Capture picture and storage Hold: Start/Stop Record Video
Hold the "Down/Palette" & "Photo/Video" buttons for 3 seconds to enter into Format mode, press the "OK" button to confirm, press the "Return/ Temperature" button to cancel it.	
Hold the "Up/Zoom" & "Down/Palette" buttons the screen will display a message to reset to reset the pictures or video files serial number	
Reset File Serial Number	
7	Diopter Adjustment Knob
8	USB Type-C connector
9	Laser Pointer
10	Thermal Imaging Lens
11	3.5 Inch Touch Screen
12	Eye-piece
13	Tripod Screw Hole
14	Hand Strap

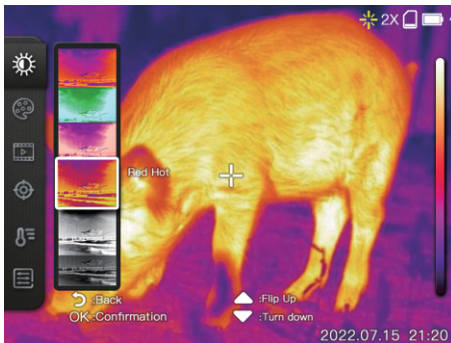
Menu Description



Menu Description



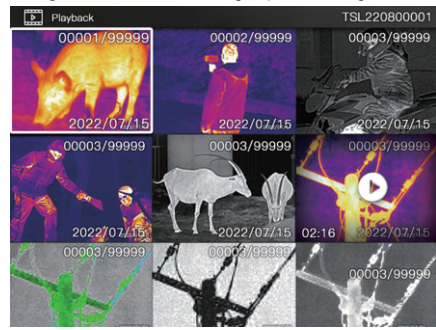
Color Palettes



Iron		In the high-temperature region, red has a large proportion, which is suitable for detecting the scenario where the high-temperature region occupies the main proportion
White hot		The high-temperature section adopts white, and the full screen mainly adopts black-and-white transition, which is suitable for users of black-and-white traditional mode
Black hot		The high-temperature section adopts black, and the full screen mainly adopts black-and-white transition, which is suitable for users of black-and-white traditional mode
Rainbow		Red is used for displaying the maximum temperature, yellow is used for displaying the medium temperature, and blue and black are used for displaying the low temperature, which is suitable for scenarios with distinct colors of high and low temperature
Red heat		The main colors are red and black, and from the minimum temperature to the maximum temperature, the black, white and red transition mode is adopted, which is suitable for scenarios focusing on the high temperature state
Cold blue		Blue is used to mark the colder regions, which is more suitable for observing low-temperature target objects

Album

All photos and videos taken by the can be conveniently viewed by clicking [Album]. The interface of the gallery is shown in Figure.



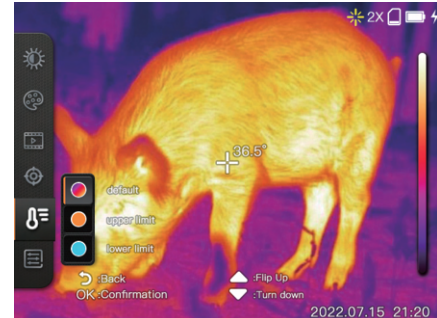
Temperature Tracking

Click the temperature tracking button on the right to enable or disable the measurement of the maximum temperature, minimum temperature and center point temperature in the real-time screen. Red is the maximum temperature, blue is the minimum temperature, and White is the center point temperature. Click to turn on temperature tracking, and click again to turn it off.



Highlight High-temperature Regions

In this mode, the high temperature region is displayed on the current color palette, and the other regions are displayed as white hot, and the temperature range can be adjusted by the slider on the right side of the color board bar. The analysis mode of highlighted high-temperature regions facilitates most application scenarios that focus solely on temperature values of high-temperature regions.



Settings

Language setting:

Supports "Simplified Chinese", "Japanese", "English", "French", "Deutsch", "Italiano", "Español" and "Русский", default is "English".

Degree Switch

Tracking

Temperature Measurement Distance

Storage

Automatic Shutdown

Automatic shutdown: you can choose "Off", "5 minutes", or "10 minutes". Automatic shutdown occurs after the minutes you choose unless you choose "Off" and the feature is disabled.

Date stamp

After the date stamp is turned on, when you take a photo or video, the date will be displayed in the lower right corner of the photo or video.

Laser

After the date stamp is turned on, when you take a photo or video, the date will be displayed in the lower right corner of the photo or video.

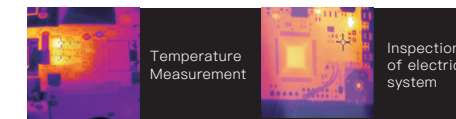
Application Environment

TTS300 thermal imagers are designed for various applications including hunting, observation, security, terrain orientation, search and rescue operations, etc.

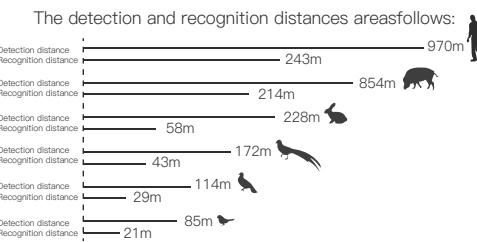
Outdoor:



Indoor:



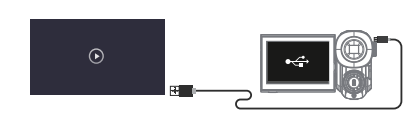
Detection Distance



Specification

Parameter	Specification
Sensor Type	256 x 192 Infrared Sensor
Screen Resolution	640 x 480
Screen rotation Angle	-90°~180°C (Max to 270°)
Frequency Band	8~14um
Image Frequency	25Hz
Focal Length	11 mm
Boot Time	<2 seconds
Zoom	1x, 2x, 4x
Image Capture	Yes
Hot Spot Tracing	Yes
Data Transfer	USB type-C Port
High-speed internal storage	8GB EMMC
Color Palette	Iron, Red hot, White hot, Black hot, Green hot
Battery Type	4000mAh
Battery Life (operating)	>10 hours (@25°C)
Operating temperature range	0°C(32°F) ~ 45°C(113°F)
Storage Temperature Range	-40°C(-104°F) ~ +60°C(140°F)
Temperature measurement accuracy	±5°
Net Weight	450g
Gross Weight	606g
Product Dimension	176mm x 69mm x 60mm

Application Environment



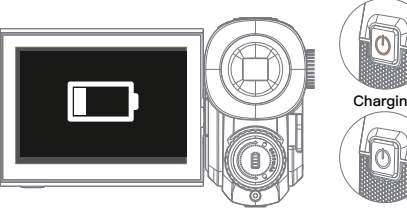
Use the USB-C cable to connect and transfer files to your laptop



Use the cable to connect and transfer files to your phone (if supports OTG)

Batterie

- Please use a 5V adapter which meets safety regulations to charge this device.
- The device supports charging while using.
- For long-term storage of the battery, make sure you fully charge it every 3 months, to ensure the battery quality. Otherwise, you may damage the battery.



Customer Service

Please contact us if you have any questions, We're glad to hear from you.

12-month Limited Warranty

Lifetime Technical Support

info@teslong.com | support@teslong.com

1-877-899-8809(US)

(Mon-Fri 8:00 AM-5:00 PM PST)



TESLONG TTS300 B1217V1.0
3.06.06.000601
Made in China