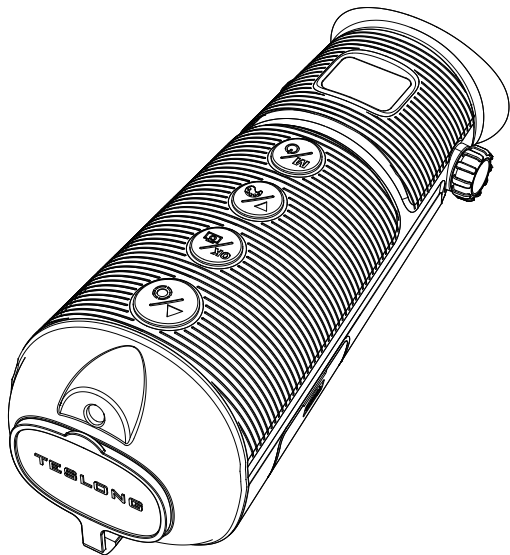


TESLONG

Thermal Imaging Monocular



User Manual

Model: TTS260

TABLE OF CONTENTS

SAFETY INSTRUCTIONS	01
Laws and Regulations	01
Operation.....	01
Transportation	01
Battery	02
Maintenance	02
Laser Warning	03
INTRODUCTION	04
SPECIFICATIONS	05
PRODUCT OVERVIEW	06
BUTTON OVERVIEW	07
BASIC OPERATIONS	08
Charging the Device	08
Power On/Off the Device.....	08
Thermal Imaging Observation.....	08
Capture Photos and Videos	09
View Photos and Videos.....	09
Transfer Files	10
OPERATIONAL INTERFACE	11
General	12
Main Menu Description.....	13
Color Palette Description	14
APPENDIX	15
REGULATORY INFORMATION	16

SAFETY INSTRUCTIONS

These instructions are intended to ensure that user can use the product correctly to avoid danger or property loss. Please read all instructions before use.

■ Laws and Regulations

Use of the product must be in strict compliance with local safety regulations.

■ Operation

- Do not point the thermal imaging camera at the sun or other strong energy sources. Doing so may cause damage to the thermal imaging detector.
- Do not use the laser near explosive gases or in other potentially explosive areas.
- Do not touch the lens with your hands. Do not knock, pry, puncture, or scratch the lens.
- Do not disassemble the thermal imaging camera.
- Do not disassemble the product in any way.

■ Transportation

- Keep the device in its original or similar packaging while transporting it.
- Keep all packaging after unpacking for future use. In case of warranty return, you need to return the device its in the original packaging.
- Transportation without the original packaging may result in damage to the device and the company shall not take any responsibilities.
- Do not drop the product or subject it to physical shock. Keep the device away from magnetic interference.

■ Battery

- The built-in battery cannot be removed. Please contact the manufacturer for repair if necessary.
- For long-term storage of the battery, make sure it is fully charged every half year to ensure the battery quality; otherwise, damage may occur.
- Make sure the plug is properly connected to the power socket.
- In the first use, power on the device and charge the battery with the lithium battery for more than 8 hours.

■ Maintenance

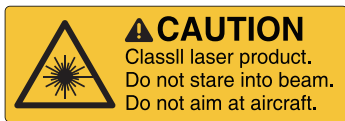
- If the product does not work properly, please contact Teslong customer service. We do not assume any responsibility for problems caused by unauthorized repair or maintenance.
- Do not clean the lens with alcohol, detergents, or organic solvents. Use only a soft, water-dampened cloth.
- If the equipment is used in a manner not specified by the manufacturer, the protection provided by the device may be impaired.
- Lens cleaning precautions, avoid excessive cleaning to prevent damage.
- Do NOT use: microfiber cloths, paper towels, or towels, as these may scratch the anti-reflective coating.
- Dry & ventilated storage, store the thermal imager in a dry, well-ventilated environment to prevent moisture damage to internal components.
- Avoid direct sunlight, prolonged exposure to sunlight accelerates aging of the housing and internal parts, reducing lifespan.
- Temperature control, avoid extreme temperatures (hot car trunks or freezing outdoor conditions) to maintain optimal performance.

■ Laser Warning

⚠ Warning:

The laser radiation emitted from the device can cause eye injuries, burning of skin or inflammable substances. Prevent eyes from viewing the laser directly.

The laser meets the IEC60825-1:2014 standard. Laser maintenance: It is not necessary to maintain the laser regularly. If the laser does not work, the laser assembly needs to be replaced in the factory under warranty.



INTRODUCTION

The TTS260 is a handheld thermal imaging monocular designed for versatile outdoor use. It supports observation, hotspot tracking, laser pointing, image capture, and video recording. Equipped with a high-sensitivity thermal detector, it delivers clear visuals even in complete darkness. The device is commonly used for hunting, patrolling, law enforcement, search and rescue, hiking, and other outdoor activities.

Features

- Built-in laser indicator to locate the target easily
- 8 color palettes: White hot/Black hot/Iron/Amber/Night vision rainbow /Dim light/Red hot/Arctic
- Built-in 32GB Micro-SD memory card supports photo capture
- The device supports 1x, 2x, 4x digital zoom
- HDMI High-Definition Output
- Super-Resolution Technology

SPECIFICATIONS

Lens

Resolution	256×192
Operating Wavelength	8-14 um
Frame Rate	25 Hz
NETD	50 mK @ 25°C
Angle of View	15°×12°
Color Palette	White hot/Black hot/Iron/Amber/Night vision rainbow/Dim light/Red hot/Arctic

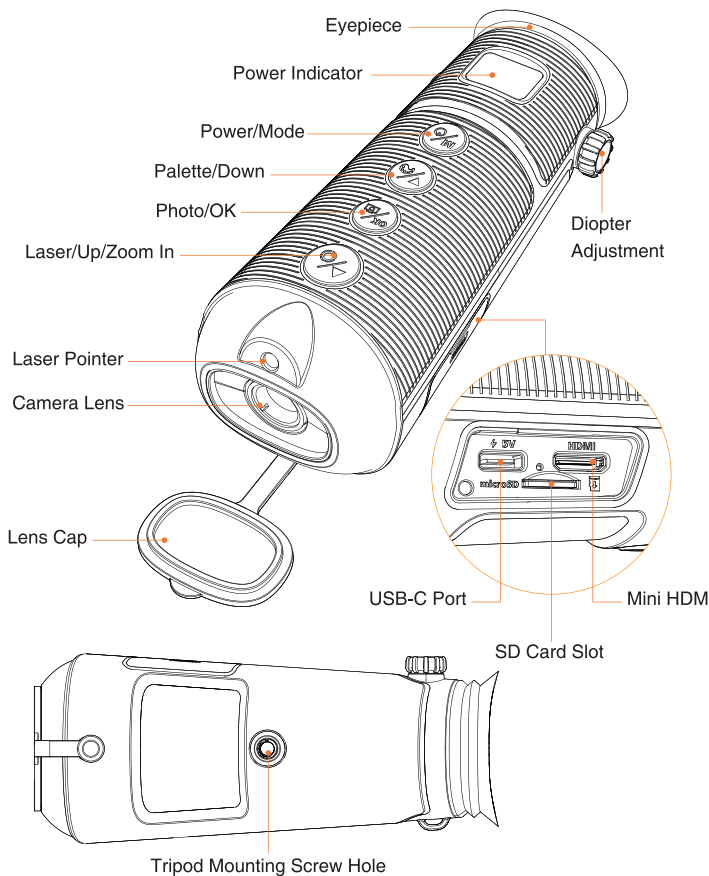
Eyepiece

Eyepiece Display Size	0.32- inch
Eyepiece Diopter Adjustment	+1D to -5D
Eyepiece Display Resolution	800×600






Others

Image Zoom	1×, 2×, 4×
Focus Distance	0.98 ft (0.3 m)-∞
Battery	4800mAh
Photo	Supported, saved in JPG format
Video Recording	Supported, saved in MP4 format
External Ports	USB-C (for charging and data transfer) Micro HDMI (Supports screen projection via HDMI)
Operating Temperature	-4-122°F (-20-50°C)

PRODUCT OVERVIEW



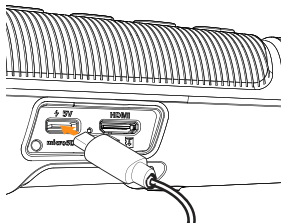
BUTTON OVERVIEW

Symbol	Option	Description
	Laser/Up /Zoom In Button	In the menu: Up button
		Short Press: The images cycle through 1x, 2x, and 4x zoom Long Press: Laser indicator switch
	Photo/OK Button	In the menu: OK button
		Short Press: Take photo Long Press: Record video
	Palette/Down Button	In the menu: Down button
		Short Press: Switch color palette (White hot/Black hot/Iron/Amber/Night vision rainbow/Dim light/Red hot/Arctic)
	Power/Mode Button	Short Press: Enter menu Long Press: Power on/off
	Diopter Adjustment	Rotate the diopter adjustment knob to focus the view according to your eyesight
HDMI	Mini HDMI	Transmit high-definition digital video signal

BASIC OPERATIONS

■ Charging the Device

- Open the side cover of the camera.
- Use the included charging cable: connect one end to the adapter and the USB-C port to the device.

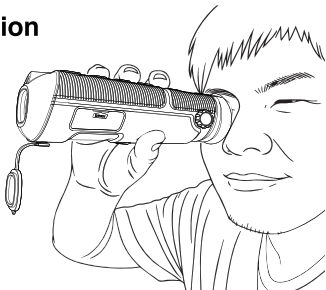


■ Power On/Off the Device

- Long press the power button to turn on/off the device.
- The camera has an Auto Power off (APO) utility that switches it off automatically if no buttons are pressed for the duration of the selected APO time. Use the menu system (under Device Settings) to set the APO timer.

■ Thermal Imaging Observation

- Point the lens toward the area to be observed (better results at a longer distance).
- Select and set the image mode/color palette as desired.
- View the camera image on the display.

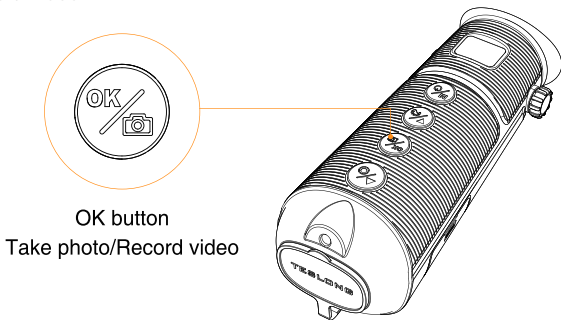


Note:




To ensure more accurate measurements, please allow the device to warm up for 5-10 minutes after powering on. During this time, any clicking sounds or screen lag are normal and indicate that the device is calibrating its temperature.

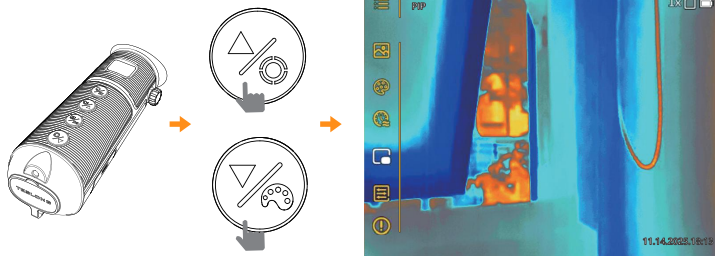
■ Capture Photos and Videos

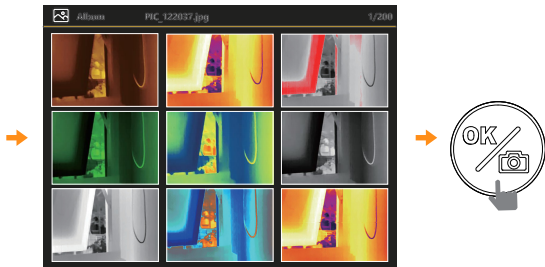
In the live view interface, press the capture button to take a photo or record a video.



■ View Photos and Videos

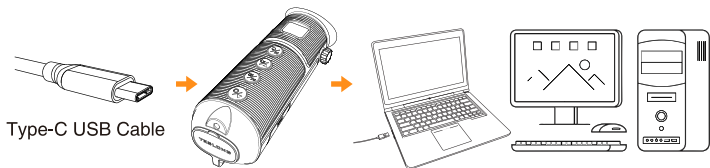
- Go to Album mode in the menu to view photos or videos.
- Use the Up  and Down  buttons to scroll through the photos or videos, and press the OK button  to view.



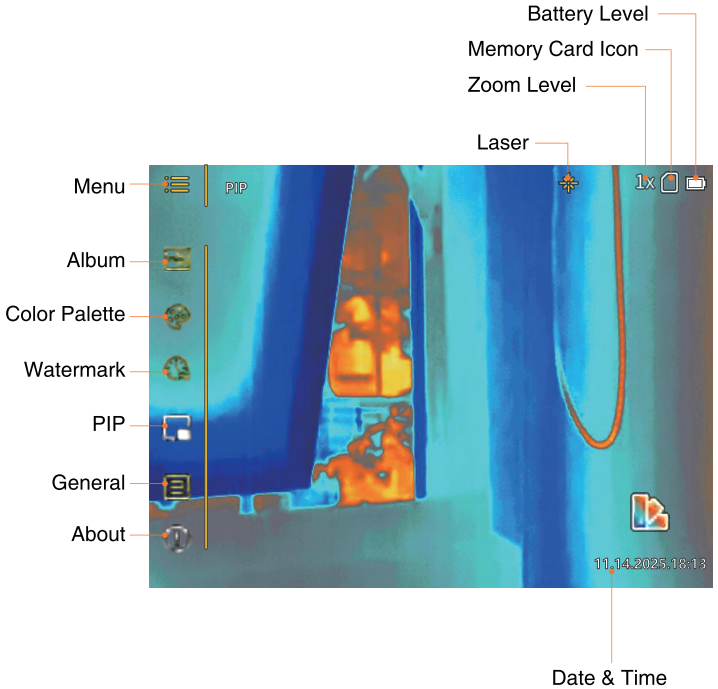


Transfer Files

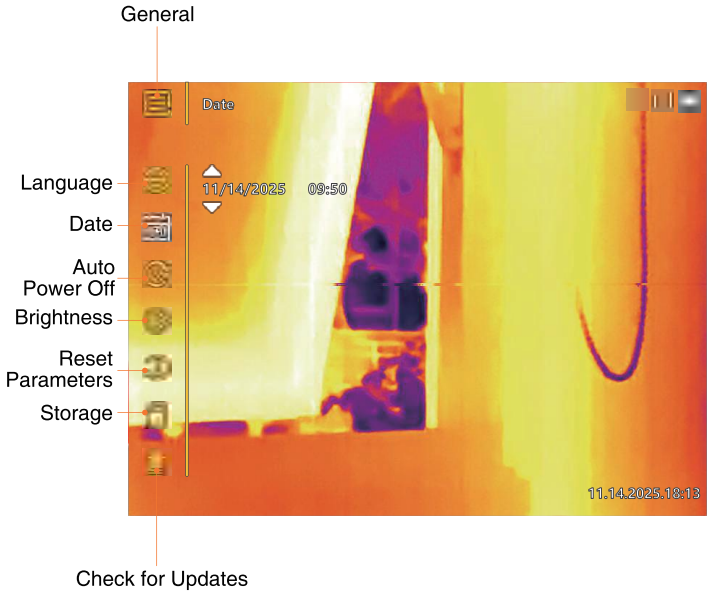
To transfer the images or videos to a PC, please open the side cover of camera, connect the camera to your PC using a USB cable, and then long press to turn on the camera; you will then be able to transfer the images or videos.









OPERATIONAL INTERFACE



General



■ Main Menu Description

	Album: Photo/video playback
	Color palette: White hot/Black hot/Iron/Amber/Night vision rainbow /Dim light/Red hot/Arctic
	Watermark: You can enable image watermarking to protect your images
	PIP: The top-left corner will display a magnified view of the screen center
	General: Includes Language/Date/Automatic Power Off /Brightness/Reset parameters/Storage /Check for Updates
	About: Product Information

Color Palette Description

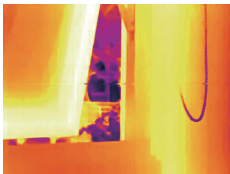
Select the color palette as desired



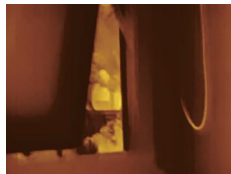
White Hot



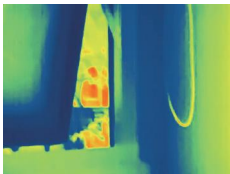
Black Hot



Iron



Amber



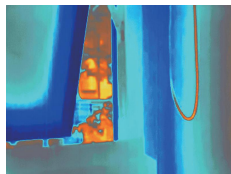
Night Vision Rainbow



Dim Light



Red Hot



Arctic

APPENDIX

Material	Emissivity
Human Skin	0.98
PCB	0.91
Cement Concrete	0.95
Ceramics	0.92
Rubber	0.95
Paint	0.93
Wood	0.85
Asphalt	0.96
Brick	0.95
Sand	0.90
Soil	0.92
Cotton	0.98
Cardboard	0.90
White Paper	0.90
Water	0.96

REGULATORY INFORMATION

FCC Information

Please note that changes or modification not expressly approved by the party responsible for compliance could void the user's authority to operate the equipment.

FCC Compliance

This equipment has been tested and found to comply with the limits for a Class B digital device, pursuant to Part 15 of the FCC Rules. These limits are designed to provide reasonable protection against harmful interference in a residential installation. This equipment generates, uses and can radiate radio frequency energy, if it is not installed and used in accordance with the instructions, it may cause harmful interference to radio communications; however, there is no guarantee that interference will not occur in a particular installation. If this equipment does cause harmful interference to radio or television reception, which can be determined by turning the equipment off and on, the user is encouraged to try to correct the interference by one or more of the following measures:

- Reorient or relocate the receiving antenna.
- Increase the separation between the equipment and receiver.
- Connect the equipment into an outlet on a circuit different from that to which the receiver is connected.
- Consult the dealer or an experienced radio/TV technician for help.

FCC Conditions

This device complies with Part 15 of the FCC Rules. Operation is subject to the following two conditions:

1. This device may not cause harmful interference.
2. This device must accept any interference received, including interference that may cause undesired operation.



Customer Service

Please contact us if you have any questions about your product.



12-month Warranty



Lifetime Technical Support



support@teslong.com



1-877-899-8809 (US)
(Mon-Fri, 8:00 AM-5:00 PM PST)



www.teslong.com



@TeslongInc



@teslongusa



@teslongusa



@teslongusa



© TESLONG TTS260 E1124 V4.2
3.06.06.000507-02