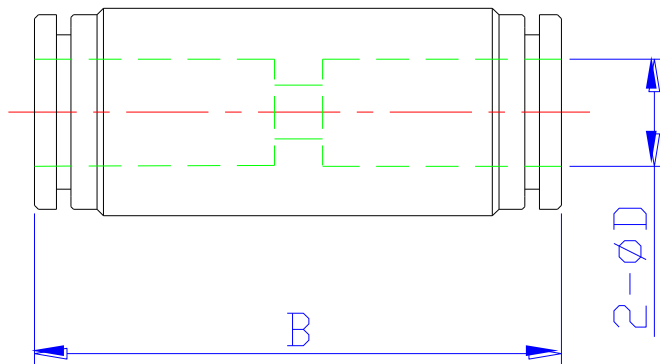


Straight Union (SUS/SUB) Push In Fitting Specifications:

Dimensions for Reference Use Only: Imperial fittings in Inch, Metric fittings in mm, U.S.O.



Part No.	Part No.	B
SUB 1/8	SUS 1/8	35.5
SUB 5/32	SUS 5/32	35.5
SUB 1/4	SUS 1/4	35.5
SUB 5/16	SUS 5/16	37
SUB 3/8	SUS 3/8	44
SUB 1/2	SUS 1/2	42.4
SUB 4	SUS 4	
SUB 6	SUS 6	35.5
SUB 8	SUS 8	37
SUB 10	SUS 10	
SUB 12	SUS 12	

Specifications, Materials of Construction and Schematic of Typical Construction:

	Stainless Steel Fittings	Nickel-Plated Brass Fittings
Operating Pressure	0 - 250 PSI (0 - 1650 kpa)	0 - 250 PSI (0 - 1650 kpa)
Vacuum	0 - 30" Hg (0 - 760 mm Hg)	0 - 30" Hg (0 - 760 mm Hg)
Operating Temperature	5 - 230 °F (-15 to 110 °C)	5 - 230 °F (-15 to 110 °C)
Recommended Tubing Material	Polyurethane, Nylon, Polyethylene, Polypropylene, and Hard metal tubing (tubing must be pre-grooved)	
Metal Body	T316 Stainless Steel	Nickel-Plated Brass
Plastic Body	None	None
Release Button	300 series Stainless Steel	Nickel-Plated Brass
Grip Ring or Collet	300 series Stainless Steel	300 series Stainless Steel
O-ring	VITON	NBR
Thread Sealant	None	Teflon
Service	Air, Liquid	Air, Liquid