

# PRODUCT ID: 7516

## Outdoor Blank-out LED Direct-view Sign

### MODEL

TCL1434GR-B037DS/120-277VAC



### DIMENSIONS

14" H x 34" W x 2.5" D (est. 11.544 lbs)

### CLASS

CLASS: TCL Series

Control Method: Switch (not included) or external relay.

### CONSTRUCTION

Back Construction: 0.050" Lift-n-Shift Back

Cabinet: 1-piece, corrosion resistant, extruded aluminum frame, 2.5" deep.

Face Material: 1/8" impact resistant, smoke-tinted polycarbonate (5109)

Faces: Single Faced Sign

Finish: Duranodic Bronze

Mounting Channel: None

### ELECTRICAL

Flashing: Not Included

Input Voltage: 120-277 VAC

Photodimming: None

UL/cUL Listed: Listed for wet locations

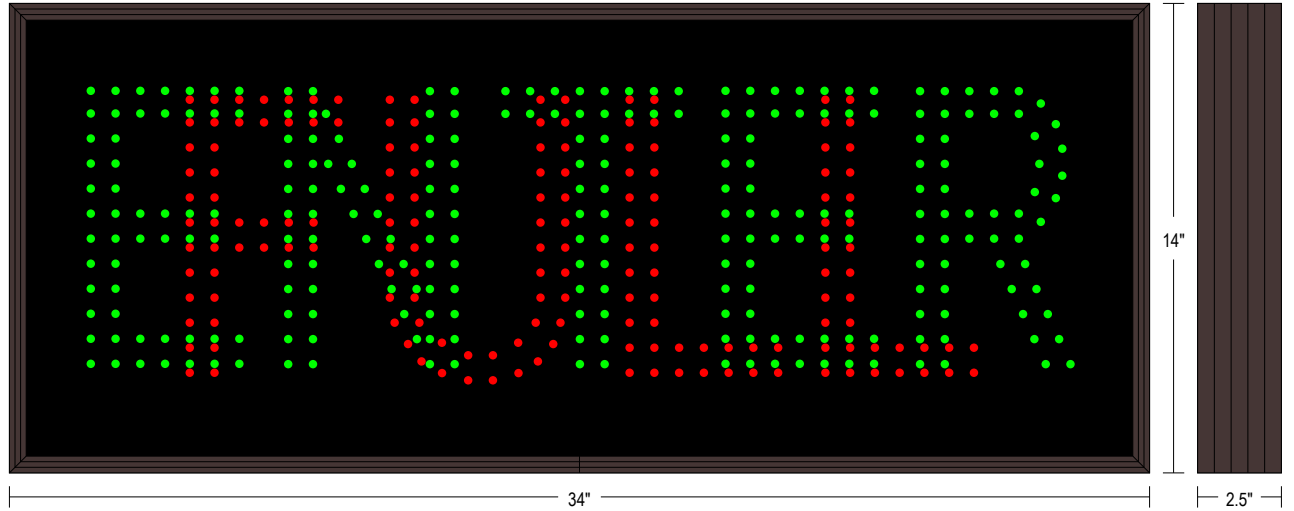
### MESSAGE

Illumination: Super bright direct view LEDs. Message blanks out when off.

Sign Messages: See message table below

## Product View

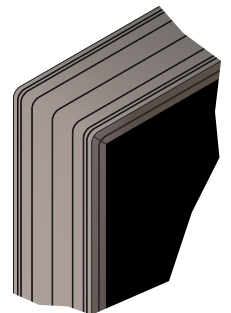
NOTE: Sign image may not exactly represent the finished product. For illustration purposes only.



### Sample Display Options



### Frame Detail



| MESSAGE | LED/COLOR            | HEIGHT | AMPS        |
|---------|----------------------|--------|-------------|
| ENTER   | Green Wide Angle LED | 8.0"   | 0.209-0.091 |
| FULL    | Red Wide Angle LED   | 8.0"   | 0.079-0.034 |

NOTE: Above messages are independently controlled.