

## PRODUCT ID: 60952

### Outdoor Blank-out LED Direct-view Sign

#### MODEL

TCL1044DRGRG-C589/120-277VAC

#### DIMENSIONS

10" H x 44" W x 7.5" D (est. 39.769 lbs)

#### CLASS

CLASS: TCL Series

Control Method: Switch (not included) or external relay.

#### CONSTRUCTION

Back Construction: 0.050" Lift-n-Shift Back

Cabinet: Mitered extruded aluminum frame with 2 hinged faces. LED displays installed with sign-in-sign construction. Moisture absorbent interior coating

Face Material: 1/8" impact resistant, smoke-tinted polycarbonate (5109)

Faces: Double Faced Sign

Finish: Duranodic Bronze

Mounting Channel: None

#### ELECTRICAL

Flashing: Not Included

Input Voltage: 120-277 VAC

Photodimming: None

UL/cUL Listed: Listed for wet locations

#### MESSAGE

Illumination: Super bright direct view LEDs. Message blanks out when off.

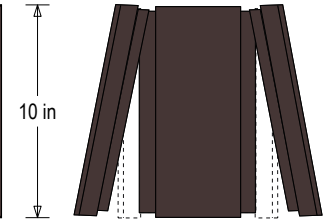
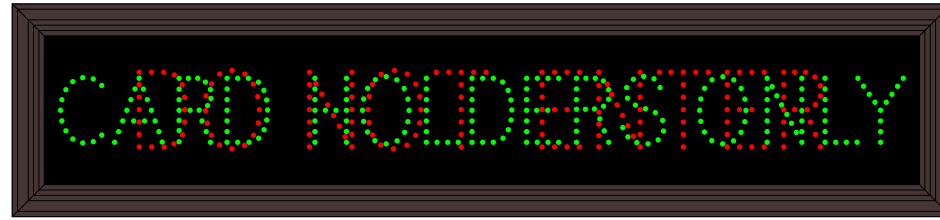
Sign Messages: See message table below



## Product View

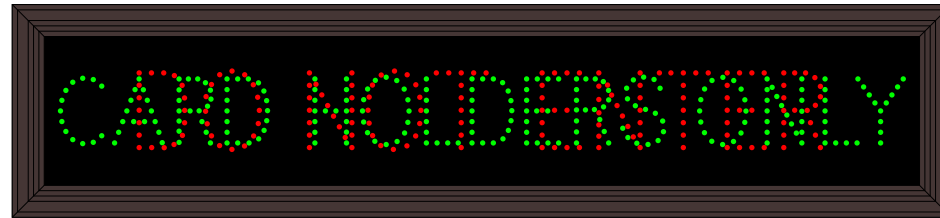
NOTE: Sign image may not exactly represent the finished product. For illustration purposes only.

Side A

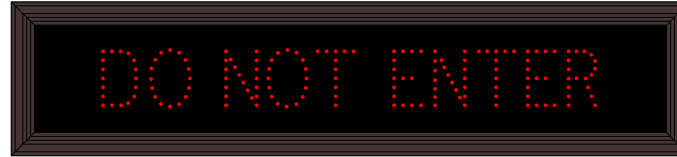
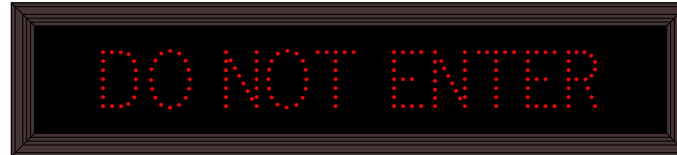


44 in

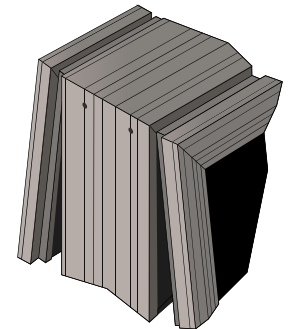
Side B



### Sample Display Options



Frame Detail



MESSAGE	LED/COLOR	HEIGHT	AMPS
DO NOT ENTER	Red Wide Angle LED	3.5"	0.077-0.034
CARD HOLDERS ONLY	Green Wide Angle LED	3.0"	0.185-0.080
DO NOT ENTER	Red Wide Angle LED	3.5"	0.077-0.034
CARD HOLDERS ONLY	Green Wide Angle LED	3.0"	0.185-0.080

NOTE: Above messages are independently controlled.