

PRODUCT ID: 53463

Outdoor Blank-out LED Direct-view Sign

MODEL

TCL4214GG-N542/120-277VAC



DIMENSIONS

42" H x 14" W x 2.5" D (est. 13.816 lbs)

CLASS

CLASS: TCL Series

Control Method: Switch (not included) or external relay.

CONSTRUCTION

Back Construction: 0.050" Lift-n-Shift Back

Cabinet: 1-piece, corrosion resistant, extruded aluminum frame, 2.5" deep.

Face Material: 1/8" impact resistant, smoke-tinted polycarbonate (5109)

Faces: Single Faced Sign

Finish: Duranodic Bronze

Mounting Channel: None

ELECTRICAL

Flashing: Not Included

Input Voltage: 120-277 VAC

Photodimming: None

UL/cUL Listed: Listed for wet locations

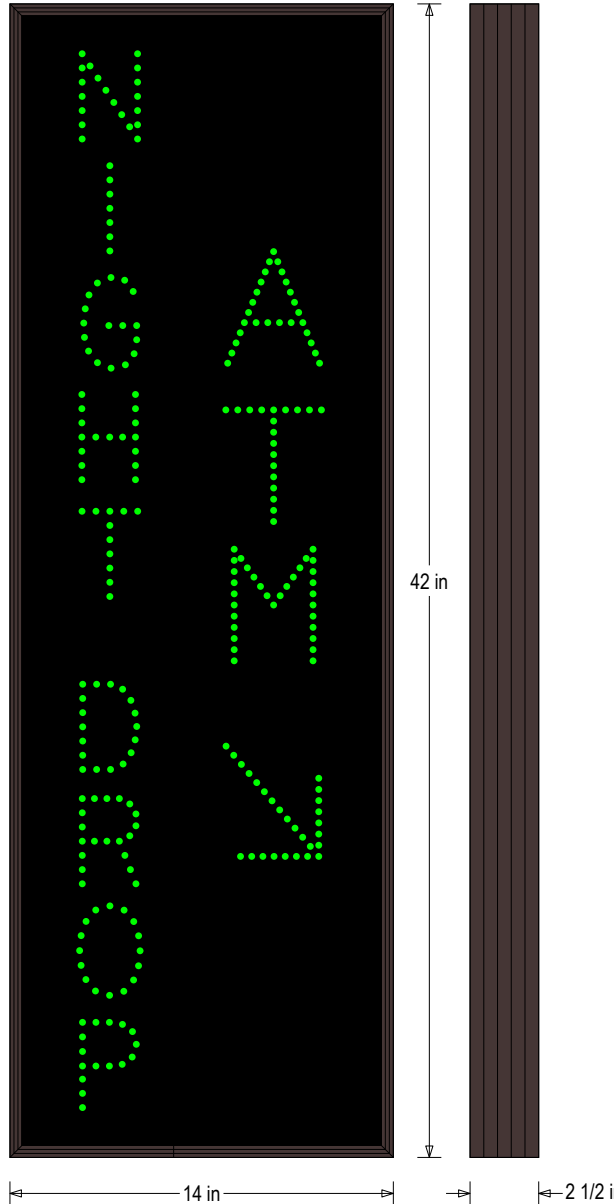
MESSAGE

Illumination: Super bright direct view LEDs. Message blanks out when off.

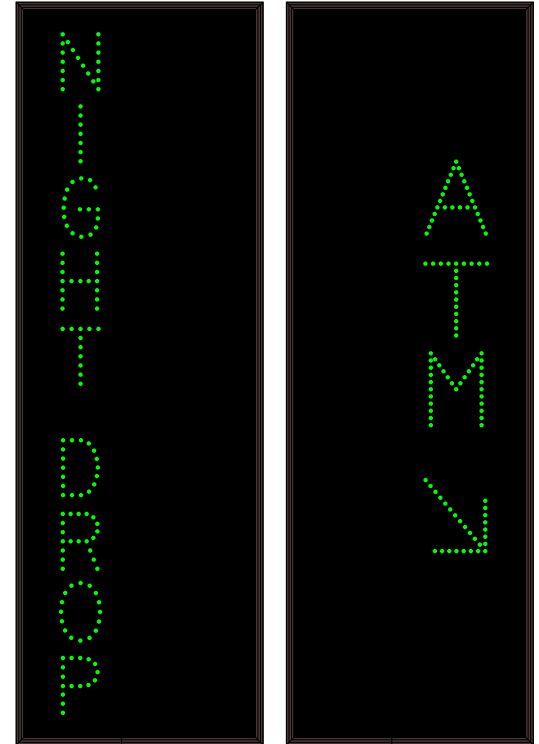
Sign Messages: See message table below

Product View

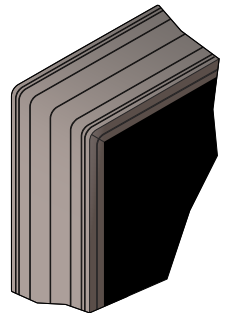
NOTE: Sign image may not exactly represent the finished product. For illustration purposes only.



Sample Display Options



Frame Detail



MESSAGE	LED/COLOR	HEIGHT	AMPS
NIGHT DROP	Green Wide Angle LED	3.125"	0.115-0.050
ATM w/ Down Right Arrow	Green Wide Angle LED	4.125"	0.087-0.038

NOTE: Above messages are independently controlled.