

PRODUCT ID: 5184

Outdoor Blank-out LED Direct-view Sign

MODEL

TCL1426GGR-C966/120-277VAC



DIMENSIONS

14" H x 26" W x 2.5" D (est. 9.791 lbs)

CLASS

CLASS: TCL Series

Control Method: Switch (not included) or external relay.

CONSTRUCTION

Back Construction: 0.050" Lift-n-Shift Back

Cabinet: 1-piece, corrosion resistant, extruded aluminum frame, 2.5" deep.

Face Material: 1/8" impact resistant, smoke-tinted polycarbonate (5109)

Faces: Single Faced Sign

Finish: Duranodic Bronze

Mounting Channel: None

ELECTRICAL

Flashing: Not Included

Input Voltage: 120-277 VAC

Photodimming: None

UL/cUL Listed: Listed for wet locations

MESSAGE

Illumination: Super bright direct view LEDs. Message blanks out when off.

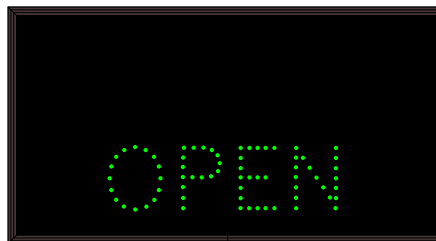
Sign Messages: See message table below

Product View

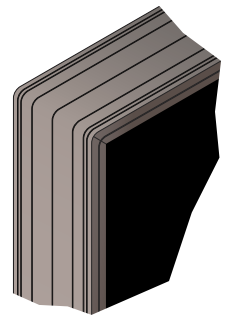
NOTE: Sign image may not exactly represent the finished product. For illustration purposes only.



Sample Display Options



Frame Detail



| MESSAGE | LED/COLOR | HEIGHT | AMPS |
|---------|----------------------|--------|-------------|
| CASHIER | Green Wide Angle LED | 3.5" | 0.081-0.035 |
| OPEN | Green Wide Angle LED | 3.5" | 0.055-0.024 |
| CLOSED | Red Wide Angle LED | 3.5" | 0.041-0.018 |

NOTE: Above messages are independently controlled.