

PRODUCT ID: 50743

Outdoor Blank-out LED Backlit Sign

MODEL

PHX1016R-M834/120-277VAC



DIMENSIONS

10" H x 16" W x 2.5" D (est. 55006.41 lbs)

CLASS

Class: PHX Series

Control Method: Switch (not included) or external relay.

CONSTRUCTION

Back Construction: 0.050" Lift-n-Shift Back

Cabinet: 1-piece, corrosion resistant, extruded aluminum frame, 2.5" deep.

Face Material: 1/8" thick, dark grey diffused acrylic

Faces: Single Faced Sign

Finish: Duranodic Bronze

Graphic: Printed graphic applied to surface

Mounting Channel: None

ELECTRICAL

Flashing: Not Included

Input Voltage: 120-277 VAC

UL/cUL Listed: Listed for wet locations

MESSAGE

Color: Black opaque

Font: Swiss 721 Bold BT

Illumination: Backlit with high intensity LEDs. Message blanks out when off

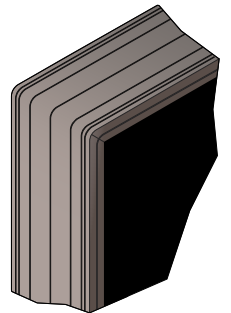
Sign Messages: See message table below

Product View

NOTE: Sign image may not exactly represent the finished product. For illustration purposes only.



Frame Detail



MESSAGE

LED/COLOR

HEIGHT

AMPS

MESSAGE	LED/COLOR	HEIGHT	AMPS
FLIGHT TEST IN PROGRESS DO NOT ENTER	Red Wide Angle LED	1.625", 1.25"	0.159-0.069

NOTE: Above messages are independently controlled.