

# PRODUCT ID: 5071

## Outdoor Blank-out LED Direct-view Sign

### MODEL

TCL1418DAA-170/120-277VAC

### DIMENSIONS

14" H x 18" W x 5.5" D (est. 13.063 lbs)

### CLASS

CLASS: TCL Series

Control Method: Switch (not included) or external relay.

### CONSTRUCTION

Back Construction: 0.050" Lift-n-Shift Back

Cabinet: Corrosion resistant, extruded aluminum frame. 5.5" deep, mitered construction.

Face Material: 1/8" impact resistant, smoke-tinted polycarbonate (5109)

Faces: Double Faced Sign

Finish: Duranodic Bronze

Mounting Channel: None

### ELECTRICAL

Flashing: Not Included

Input Voltage: 120-277 VAC

Photodimming: None

UL/cUL Listed: Listed for wet locations

### MESSAGE

Illumination: Super bright direct view LEDs. Message blanks out when off.

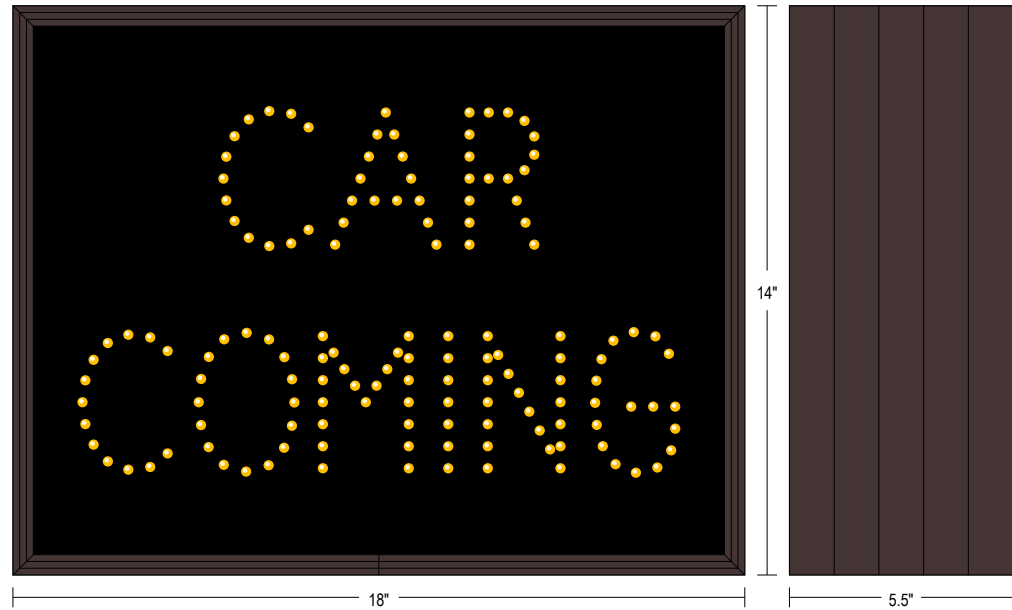
Sign Messages: See message table below



## Product View

NOTE: Sign image may not exactly represent the finished product. For illustration purposes only.

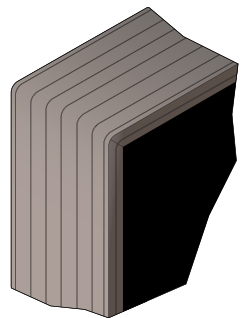
Side A



Side B



Frame Detail



MESSAGE	LED/COLOR	HEIGHT	AMPS
---------	-----------	--------	------

CAR COMING	Amber Wide Angle LED	3.25"	0.067-0.029
------------	----------------------	-------	-------------

CAR COMING	Amber Wide Angle LED	3.25"	0.067-0.029
------------	----------------------	-------	-------------

NOTE: Above messages are independently controlled.