

PRODUCT ID: 45052

Outdoor Blank-out LED Direct-view Sign

MODEL

TCL1212DRG-175DS/12-24VDC

DIMENSIONS

12" H x 12" W x 5.5" D (est. 6.52 lbs)

CLASS

CLASS: TCL Series

Control Method: Switch (not included) or external relay.

CONSTRUCTION

Back Construction: 0.050" Lift-n-Shift Back

Cabinet: Corrosion resistant, extruded aluminum frame. 5.5" deep, mitered construction.

Face Material: 1/8" impact resistant, smoke-tinted polycarbonate (5109)

Faces: Double Faced Sign

Finish: Duranodic Bronze

Mounting Channel: None

ELECTRICAL

Flashing: Not Included

Input Voltage: 12-24 VDC

Photodimming: None

UL/cUL Listed: Listed for wet locations

MESSAGE

Illumination: Super bright direct view LEDs. Message blanks out when off.

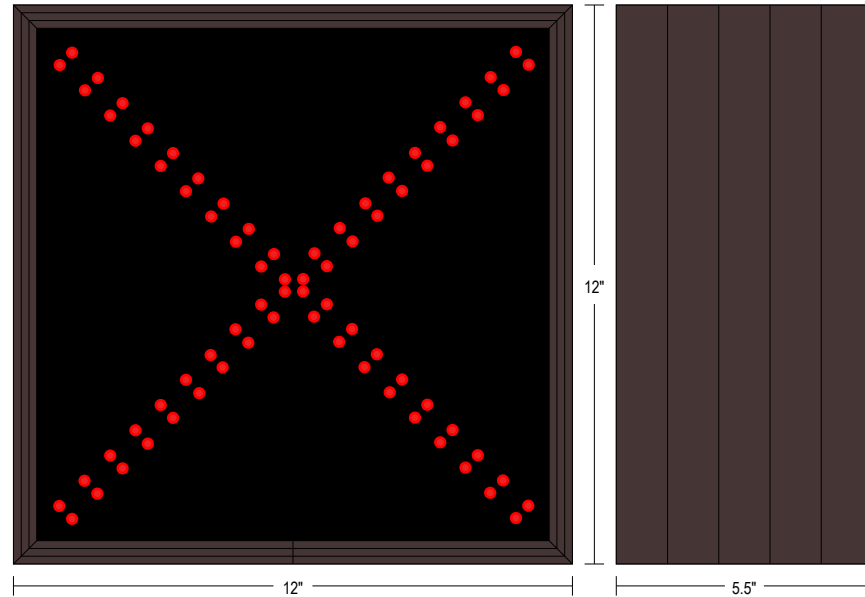
Sign Messages: See message table below



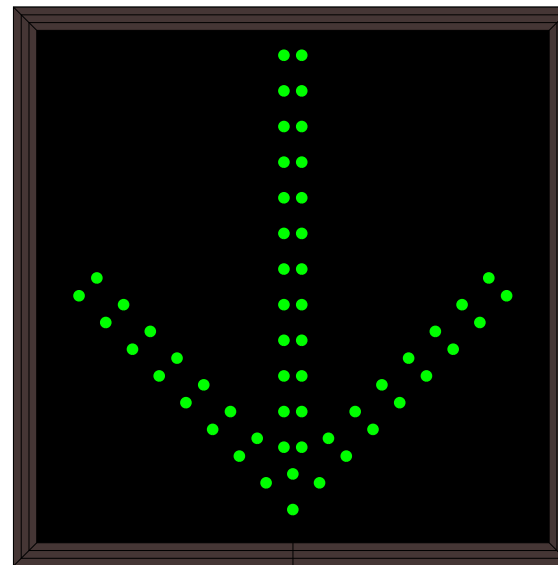
Product View

NOTE: Sign image may not exactly represent the finished product. For illustration purposes only.

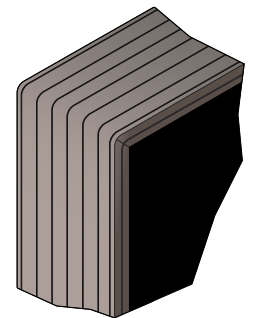
Side A



Side B



Frame Detail



| MESSAGE | LED/COLOR | HEIGHT | AMPS |
|---------|-----------|--------|------|
|---------|-----------|--------|------|

| | | | |
|------------|----------------------|------|-------------|
| Down Arrow | Green Wide Angle LED | 9.0" | 0.453-0.227 |
| X | Red Wide Angle LED | 9.0" | 0.387-0.193 |

NOTE: Above messages are independently controlled.