

PRODUCT ID: 42374

Indoor Blank-out LED Backlit Sign

MODEL

SBL811R-L113/120-277VAC



DIMENSIONS

8" H x 11" W x 2.5" D (est. 3.627 lbs)

CLASS

Class: SBL Series

Control Method: Switch (not included) or external relay.

CONSTRUCTION

Back Construction: 0.050" Lift-n-Shift Back

Cabinet: 1-piece, corrosion resistant, extruded aluminum frame, 2.5" deep.

Face Material: 1/8" thick, dark grey diffused acrylic

Faces: Single Faced Sign

Finish: Duranodic Bronze

Graphic: Printed graphic applied to surface

ELECTRICAL

Flashing: Not Included

Input Voltage: 120-277 VAC

UL/cUL Listed: Listed

MESSAGE

Color: Black opaque

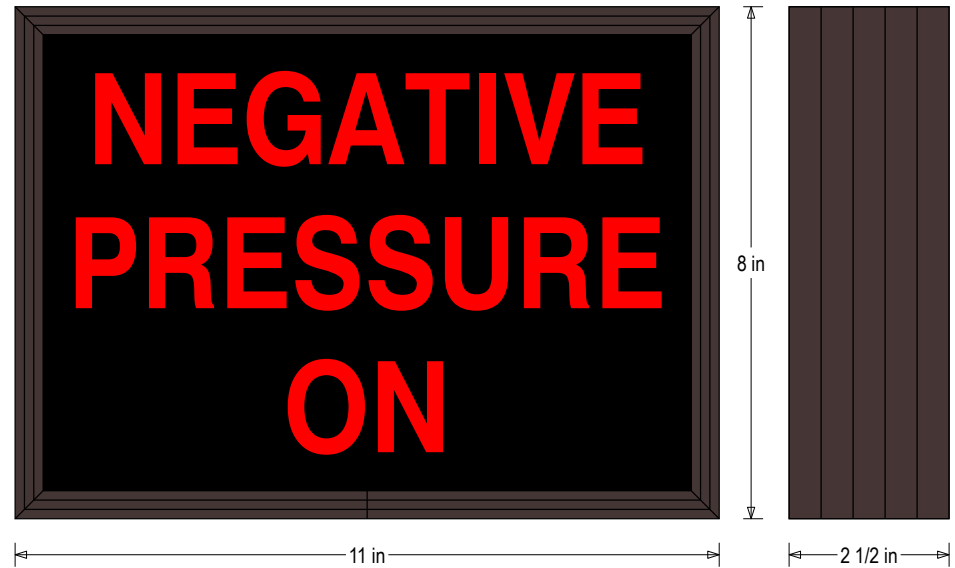
Font: Swiss 721 Bold BT

Illumination: Backlit with LEDs. Message blanks out when off.

Sign Messages: See message table below

Product View

NOTE: Sign image may not exactly represent the finished product. For illustration purposes only.



MESSAGE

LED/COLOR

HEIGHT

AMPS

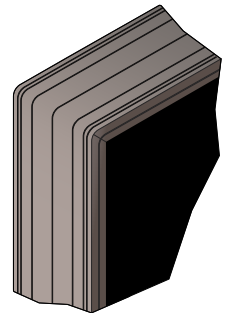
NEGATIVE PRESSURE ON

Red Wide Angle LED

1.5"

0.039-0.017

Frame Detail



NOTE: Above messages are independently controlled.