

PRODUCT ID: 40620

Outdoor Blank-out LED Direct-view Sign

MODEL

TCL1418DAA-A385/12-24VDC

DIMENSIONS

14" H x 18" W x 5.5" D (est. 12.43 lbs)

CLASS

CLASS: TCL Series

Control Method: Switch (not included) or external relay.

CONSTRUCTION

Back Construction: 0.050" Lift-n-Shift Back

Cabinet: Corrosion resistant, extruded aluminum frame. 5.5" deep, mitered construction.

Face Material: 1/8" impact resistant, smoke-tinted polycarbonate (5109)

Faces: Double Faced Sign

Finish: Duranodic Bronze

Mounting Channel: None

ELECTRICAL

Flashing: Not Included

Input Voltage: 12-24 VDC

Photodimming: None

UL/cUL Listed: Listed for wet locations

MESSAGE

Illumination: Super bright direct view LEDs. Message blanks out when off.

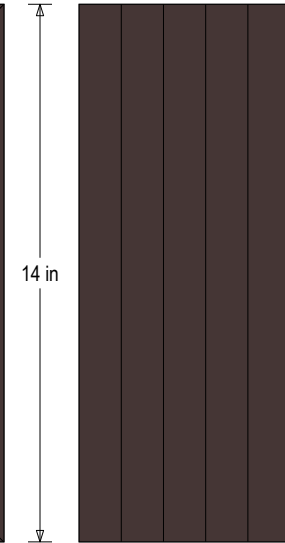
Sign Messages: See message table below



Product View

NOTE: Sign image may not exactly represent the finished product. For illustration purposes only.

Side A



14 in

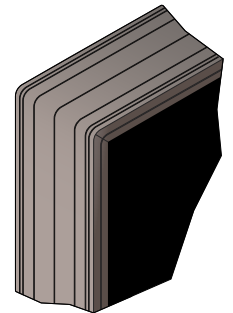
18 in

5 1/2 in

Side B



Frame Detail



MESSAGE

MESSAGE	LED/COLOR	HEIGHT	AMPS
CAUTION CAR EXITING	Amber Wide Angle LED	2.625"	1.147-0.573
CAUTION CAR EXITING	Amber Wide Angle LED	2.625"	1.147-0.573

NOTE: Above messages are independently controlled.