

PRODUCT ID: 38729
Indoor LED Backlit Sign

MODEL
SBLF811W-195B/120-277VAC



DIMENSIONS
8" H x 11" W x 2.5" D (est. 3.232 lbs)

CLASS
Class: SBLF Series
Control Method: Switch (not included) or external relay.

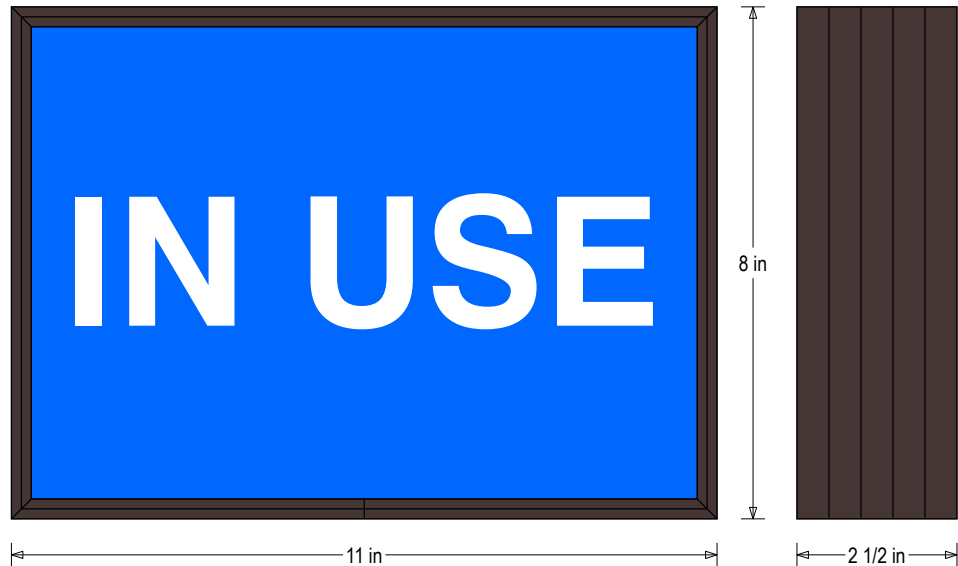
CONSTRUCTION
Back Construction: 0.050" Lift-n-Shift Back
Cabinet: 1-piece, corrosion resistant, extruded aluminum frame, 2.5" deep.
Face Material: 1/8" thick, impact modified acrylic (0000)
Faces: Single Faced Sign
Finish: Duranodic Bronze
Graphic: Printed graphic applied to surface

ELECTRICAL
Flashing: Not Included
Input Voltage: 120-277 VAC
UL/cUL Listed: Listed

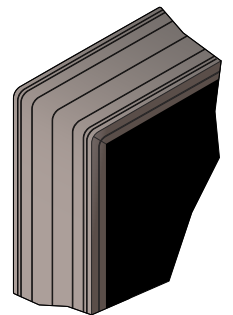
MESSAGE
Color: Blue translucent
Font: Swiss 721 Bold BT
Illumination: Backlit with white LEDs. Message always visible.
Sign Messages: See message table below

Product View

NOTE: Sign image may not exactly represent the finished product. For illustration purposes only.



Frame Detail



MESSAGE	LED/COLOR	HEIGHT	AMPS
IN USE	White Wide Angle LED	2.0"	0.059-0.026

NOTE: Above messages are independently controlled.