

**PRODUCT ID: 38728**  
Indoor LED Backlit Sign

**MODEL**  
SBLF811W-195R/120-277VAC



**DIMENSIONS**  
8" H x 11" W x 2.5" D (est. 5.217 lbs)

**CLASS**  
Class: SBLF Series  
Control Method: Switch (not included) or external relay.

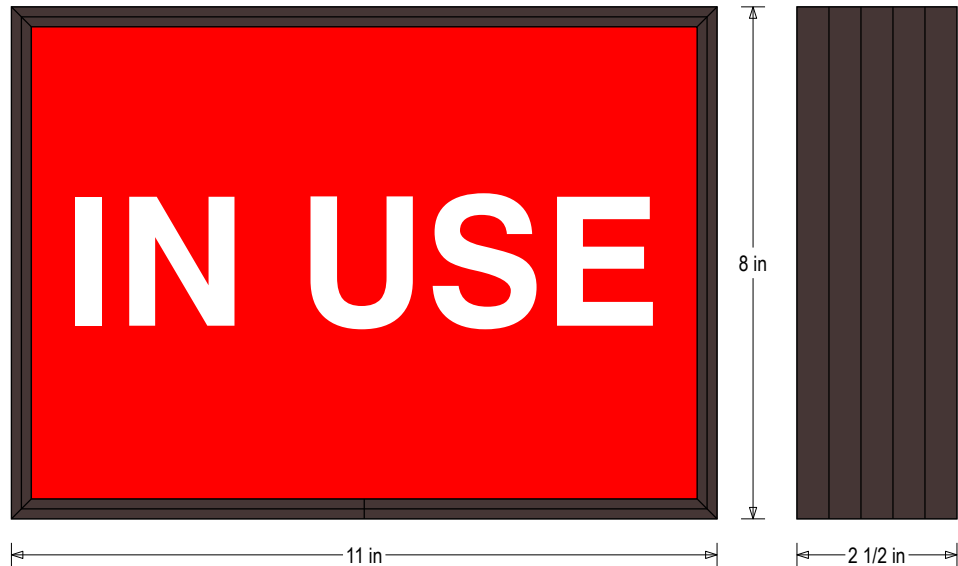
**CONSTRUCTION**  
Back Construction: 0.050" Lift-n-Shift Back  
Cabinet: 1-piece, corrosion resistant, extruded aluminum frame, 2.5" deep.  
Face Material: 1/8" thick, impact modified acrylic (0000)  
Faces: Single Faced Sign  
Finish: Duranodic Bronze  
Graphic: Printed graphic applied to surface

**ELECTRICAL**  
Flashing: Not Included  
Input Voltage: 120-277 VAC  
UL/cUL Listed: Listed

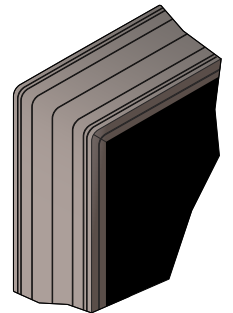
**MESSAGE**  
Color: Red translucent  
Font: Swiss 721 Bold BT  
Illumination: Backlit with white LEDs. Message always visible.  
Sign Messages: See message table below

**Product View**

NOTE: Sign image may not exactly represent the finished product. For illustration purposes only.



Frame Detail



MESSAGE	LED/COLOR	HEIGHT	AMPS
IN USE	Red Translucent, White Wide Angle LED	2.0"	0.058-0.025

NOTE: Above messages are independently controlled.