

PRODUCT ID: 37434

Outdoor Blank-out LED Direct-view Sign

MODEL

TCL1426A-D473



DIMENSIONS

14" H x 26" W x 2.5" D (est. 9.741 lbs)

CLASS

CLASS: TCL Series

Control Method: Switch (not included) or external relay.

CONSTRUCTION

Back Construction: 0.050" Lift-n-Shift Back

Cabinet: 1-piece, corrosion resistant, extruded aluminum frame, 2.5" deep.

Face Material: 1/8" impact resistant, smoke-tinted polycarbonate (5109)

Faces: Single Faced Sign

Finish: Duranodic Bronze

Mounting Channel: None

ELECTRICAL

Flashing: Not Included

Input Voltage: 120-277 VAC

Photodimming: None

UL/cUL Listed: Listed for wet locations

MESSAGE

Illumination: Super bright direct view LEDs. Message blanks out when off.

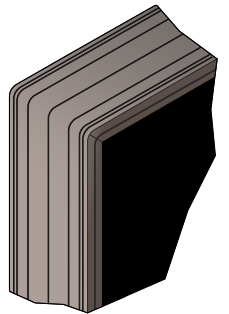
Sign Messages: See message table below

Product View

NOTE: Sign image may not exactly represent the finished product. For illustration purposes only.



Frame Detail



| MESSAGE | LED/COLOR | HEIGHT | AMPS |
|----------------------------|----------------------|--------|-------------|
| CAUTION OVERHEIGHT VEHICLE | Amber Wide Angle LED | 3.0" | 0.159-0.069 |

NOTE: Above messages are independently controlled.