

PRODUCT ID: 35725

Outdoor Blank-out LED Direct-view Sign

MODEL

TCL2042G-I960/120-277VAC



DIMENSIONS

20" H x 42" W x 2.5" D (est. 25.272 lbs)

CLASS

CLASS: TCL Series

Control Method: Switch (not included) or external relay.

CONSTRUCTION

Back Construction: 0.050" Lift-n-Shift Back

Cabinet: 1-piece, corrosion resistant, extruded aluminum frame, 2.5" deep.

Face Material: 1/8" impact resistant, smoke-tinted polycarbonate (5109)

Faces: Single Faced Sign

Finish: Duranodic Bronze

Mounting Channel: None

ELECTRICAL

Flashing: Not Included

Input Voltage: 120-277 VAC

Photodimming: None

UL/cUL Listed: Listed for wet locations

MESSAGE

Illumination: Super bright direct view LEDs. Message blanks out when off.

Sign Messages: See message table below

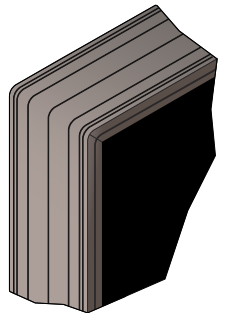
Product View

NOTE: Sign image may not exactly represent the finished product. For illustration purposes only.



MESSAGE	LED/COLOR	HEIGHT	AMPS
SERVICE w/Down Arrow	Green Wide Angle LED	3.5", 9.0"	0.123-0.053

Frame Detail



NOTE: Above messages are independently controlled.