

## PRODUCT ID: 35543

### Outdoor Blank-out LED Backlit Sign

#### MODEL

PHX718DRR-F398

#### DIMENSIONS

7" H x 18" W x 5.5" D (est. 11.169 lbs)

#### CLASS

Class: PHX Series

Control Method: Switch (not included) or external relay.

#### CONSTRUCTION

Back Construction: 0.050" Lift-n-Shift Back

Cabinet: Corrosion resistant, extruded aluminum frame. 5.5" deep, mitered construction.

Face Material: 1/8" thick, dark grey diffused acrylic

Faces: Double Faced Sign

Finish: Duranodic Bronze

Graphic: Printed graphic applied to surface

Mounting Channel: None

#### ELECTRICAL

Flashing: Not Included

Input Voltage: 120-277 VAC

UL/cUL Listed: Listed for wet locations

#### MESSAGE

Color: Black opaque

Font: Swiss 721 Bold BT

Illumination: Backlit with high intensity LEDs. Message blanks out when off

Sign Messages: See message table below



## Product View

NOTE: Sign image may not exactly represent the finished product. For illustration purposes only.

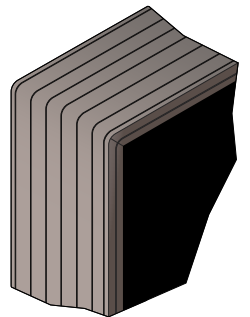
Side A



Side B



Frame Detail



MESSAGE	LED/COLOR	HEIGHT	AMPS
QUIET INTERVIEW IN PROGRESS	Red	1.5"	0.240-0.104
QUIET INTERVIEW IN PROGRESS	Red	1.5"	0.240-0.104

NOTE: Above messages are independently controlled.