

# PRODUCT ID: 34655

## Outdoor Blank-out LED Direct-view Sign

### MODEL

TCL1434GG-H825/120-277VAC



### DIMENSIONS

14" H x 34" W x 2.5" D (est. 14.242 lbs)

### CLASS

CLASS: TCL Series

Control Method: Switch (not included) or external relay.

### CONSTRUCTION

Back Construction: 0.050" Lift-n-Shift Back

Cabinet: 1-piece, corrosion resistant, extruded aluminum frame, 2.5" deep.

Face Material: 1/8" impact resistant, smoke-tinted polycarbonate (5109)

Faces: Single Faced Sign

Finish: Duranodic Bronze

Mounting Channel: None

### ELECTRICAL

Flashing: Not Included

Input Voltage: 120-277 VAC

Photodimming: None

UL/cUL Listed: Listed for wet locations

### MESSAGE

Illumination: Super bright direct view LEDs. Message blanks out when off.

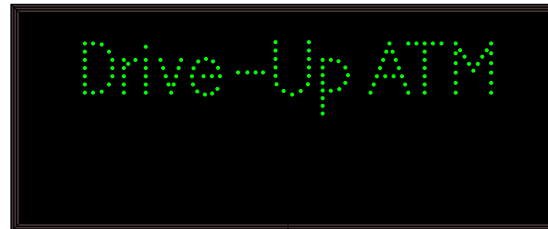
Sign Messages: See message table below

## Product View

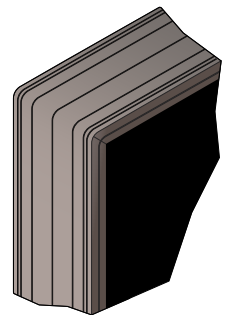
NOTE: Sign image may not exactly represent the finished product. For illustration purposes only.



### Sample Display Options



### Frame Detail



MESSAGE	LED/COLOR	HEIGHT	AMPS
Drive-Up ATM	Green Wide Angle LED	3.25"	0.105-0.046
with Teller Assist	Green Wide Angle LED	3.25"	0.144-0.062

NOTE: Above messages are independently controlled.