

PRODUCT ID: 24423

Outdoor Blank-out LED Direct-view Sign

MODEL

TCL217RBG-226H/120-277VAC



DIMENSIONS

21" H x 7" W x 2.5" D (est. 4.989 lbs)

CLASS

CLASS: TCL Series

Control Method: Switch (not included) or external relay.

CONSTRUCTION

Back Construction: 0.050" Lift-n-Shift Back

Cabinet: 1-piece, corrosion resistant, extruded aluminum frame, 2.5" deep.

Face Material: Injection molded, impact resistant Lexan hood with Lexan lenses

Faces: Single Faced Sign

Finish: Duranodic Bronze

Mounting Channel: None

ELECTRICAL

Flashing: Not Included

Input Voltage: 120-277 VAC

Photodimming: None

UL/cUL Listed: Listed for wet locations

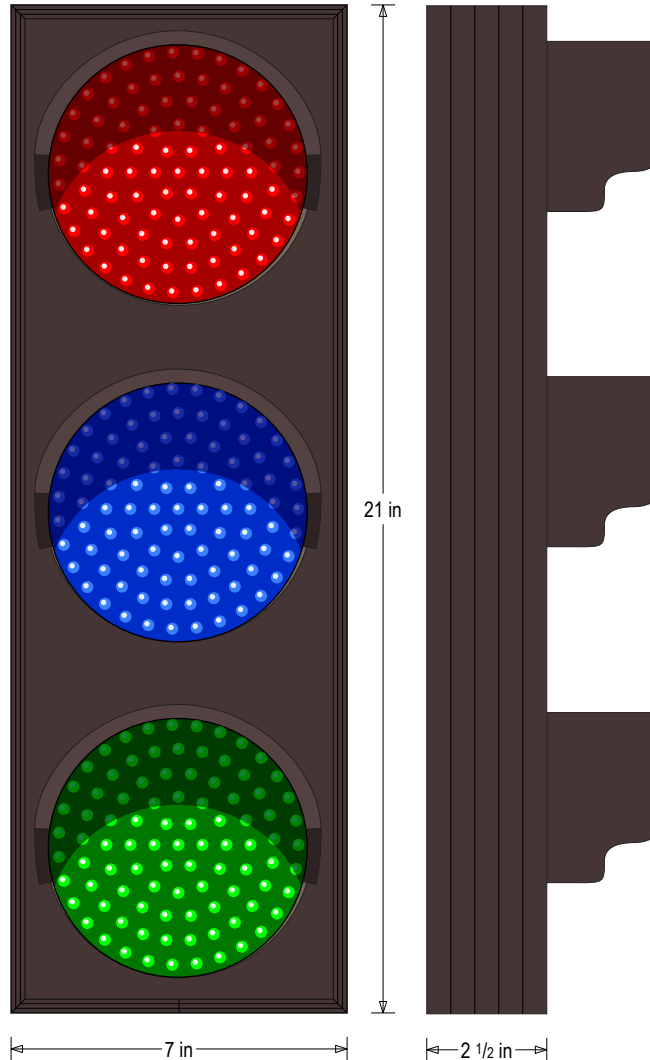
MESSAGE

Illumination: Super bright direct view LEDs. Message blanks out when off.

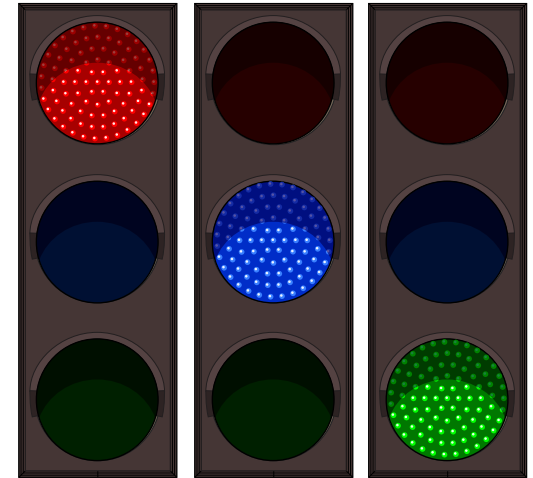
Sign Messages: See message table below

Product View

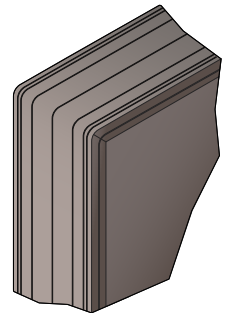
NOTE: Sign image may not exactly represent the finished product. For illustration purposes only.



Sample Display Options



Frame Detail



MESSAGE	LED/COLOR	HEIGHT	AMPS
RED INDICATOR DOT	Red Wide Angle LED	5.0"	0.045-0.020
BLUE INDICATOR DOT	Blue Wide Angle LED	5.0"	0.075-0.032
GREEN INDICATOR DOT	Green Wide Angle LED	5.0"	0.075-0.032

NOTE: Above messages are independently controlled.