

PRODUCT ID: 21634

Mast Arm Post

MODEL

MAP120B12

DIMENSIONS

120" H x 108" W x 12" D (est. 65.12 lbs)

CONSTRUCTION

Finish: Duranodic Bronze

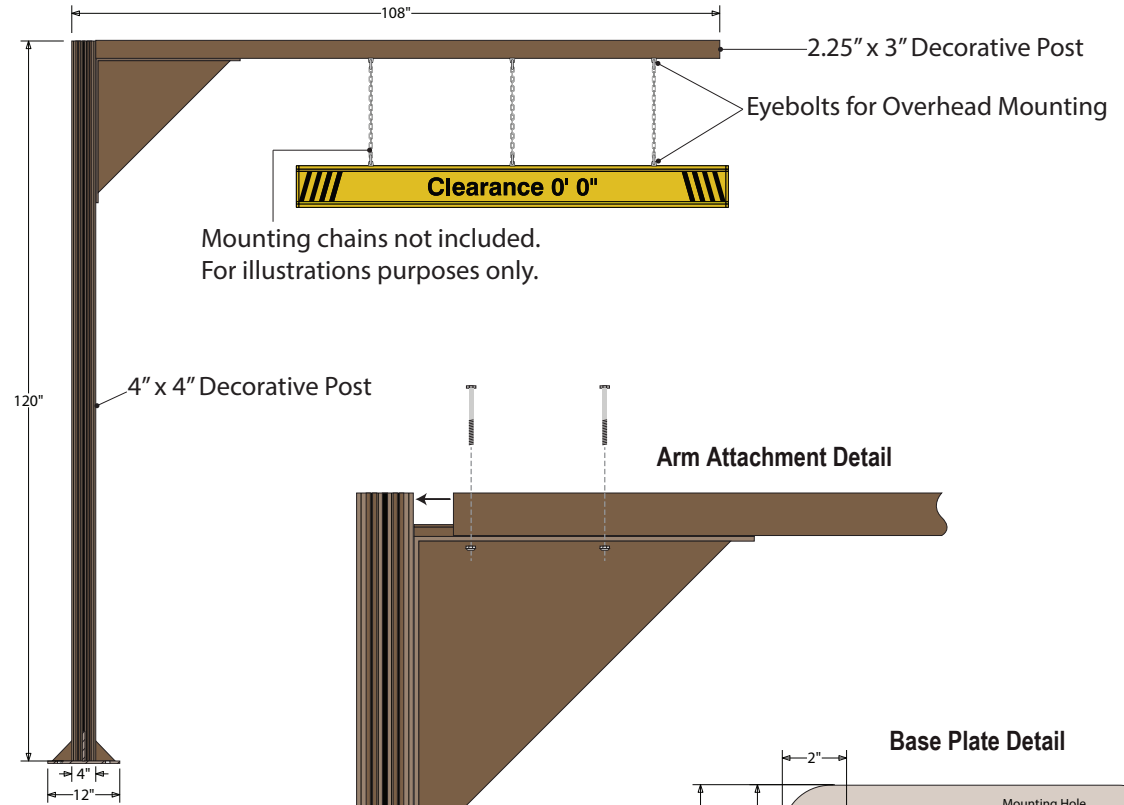
Horizontal Post: 2.25"x3" post with one sign mounting channel and one end cap. Supports up to 6ft long Clearance I-Bar.

Structural Gusset: 18"h x 18"w x 3/8"d aluminum plate; one side welded to upright post, extruded "T" mounting welded to the top. Horizontal post slides onto mounting and is secured in place with bolts.

Upright Post: 4" x 4" fluted extruded aluminum post with a sign mounting channel on each side, one mounting rail extrusion, one end cap and 12"x12" welded base plate. Base plate is a 3/8" aluminum plate with pre-drilled anchoring holes and 4-4" high welded gussets.

Product View

NOTE: Sign image may not exactly represent the finished product. For illustration purposes only.



Mounting chains not included.
For illustrations purposes only.

Arm Attachment Detail

Base Plate Detail

