

PRODUCT ID: 18130

Outdoor Blank-out LED Direct-view Sign

MODEL

TCL427AA-D704/120-277VAC



DIMENSIONS

42" H x 7" W x 2.5" D (est. 11.066 lbs)

CLASS

CLASS: TCL Series

Control Method: Switch (not included) or external relay.

CONSTRUCTION

Back Construction: 0.050" Lift-n-Shift Back

Cabinet: 1-piece, corrosion resistant, extruded aluminum frame, 2.5" deep.

Face Material: 1/8" impact resistant, smoke-tinted polycarbonate (5109)

Faces: Single Faced Sign

Finish: Duranodic Bronze

Mounting Channel: None

ELECTRICAL

Flashing: Not Included

Input Voltage: 120-277 VAC

Photodimming: None

UL/cUL Listed: Listed for wet locations

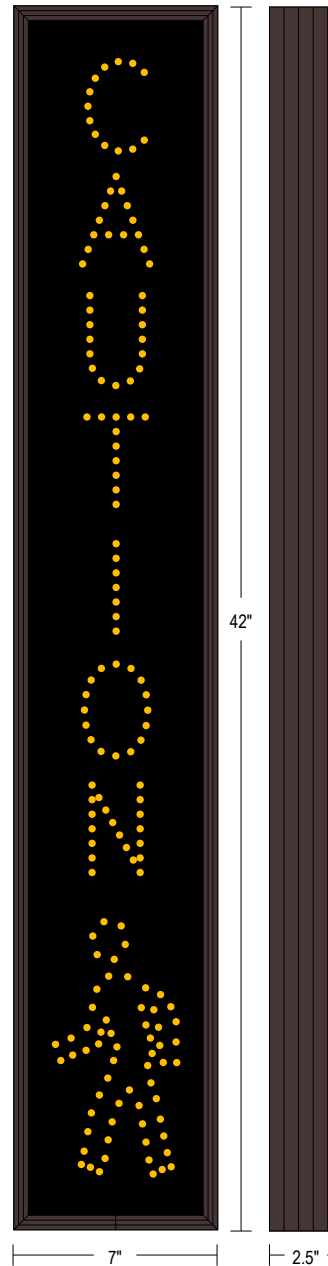
MESSAGE

Illumination: Super bright direct view LEDs. Message blanks out when off.

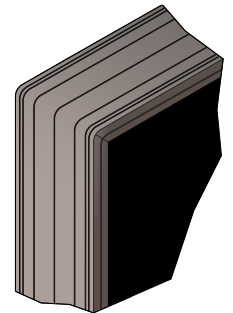
Sign Messages: See message table below

Product View

NOTE: Sign image may not exactly represent the finished product. For illustration purposes only.



Frame Detail



MESSAGE	LED/COLOR	HEIGHT	AMPS
CAUTION	Amber Wide Angle LED	3.0"	0.048-0.021
PEDESTRIAN SYMBOL	Amber Wide Angle LED	8.6875"	0.031-0.013

NOTE: Above messages are independently controlled.