

PRODUCT ID: 14842

Outdoor Blank-out LED Direct-view Sign

MODEL

TCL187DGG-180/120-277VAC

DIMENSIONS

18" H x 7" W x 5.5" D (est. 9.634 lbs)

CLASS

CLASS: TCL Series

Control Method: Switch (not included) or external relay.

CONSTRUCTION

Back Construction: 0.050" Lift-n-Shift Back

Cabinet: Corrosion resistant, extruded aluminum frame. 5.5" deep, mitered construction.

Face Material: 1/8" impact resistant, smoke-tinted polycarbonate (5109)

Faces: Double Faced Sign

Finish: Duranodic Bronze

Mounting Channel: None

ELECTRICAL

Flashing: Not Included

Input Voltage: 120-277 VAC

Photodimming: None

UL/cUL Listed: Listed for wet locations

MESSAGE

Illumination: Super bright direct view LEDs. Message blanks out when off.

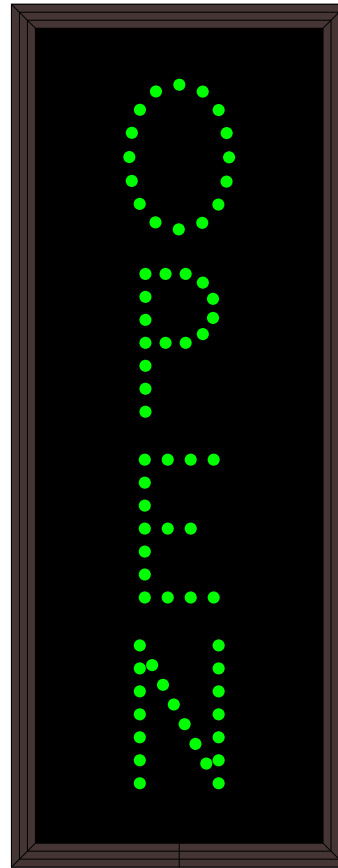
Sign Messages: See message table below



Product View

NOTE: Sign image may not exactly represent the finished product. For illustration purposes only.

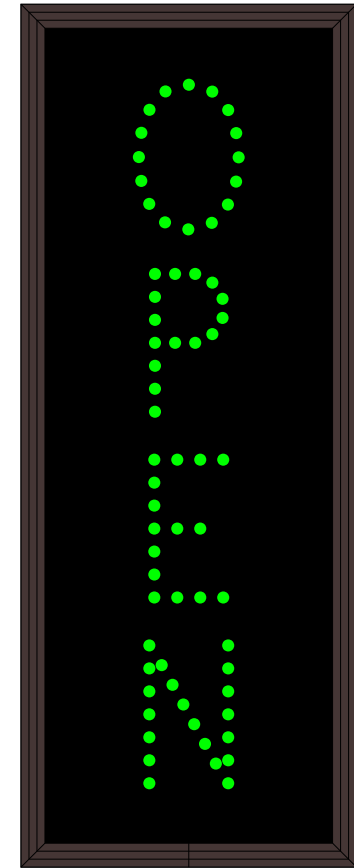
Side A



7"

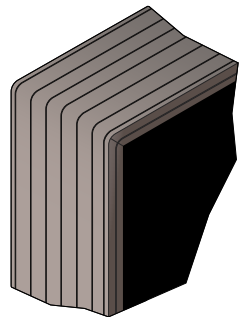
18"

Side B



5.5"

Frame Detail



MESSAGE	LED/COLOR	HEIGHT	AMPS
---------	-----------	--------	------

OPEN	Green Wide Angle LED	2.875"	0.053-0.023
OPEN	Green Wide Angle LED	2.875"	0.053-0.023

NOTE: Above messages are independently controlled.