

Greenhouse Ventilation Solutions

Circulation Fans | Exhaust Fans | Evaporative Cooling
Heaters | Misting Systems | Controls





- Horizontal Air Flow Fans
- Fan Controls



HIGH VELOCITY GREENHOUSE FANS

Schaefer's Deep-Guard Circulation Fans are unrivaled in the industry, expertly engineered to produce greater air movement and superior cooling with less noise. Look no further for the best way to reduce heat stress and improve air quality. Galvanized guards are available. The VK8 is great for hobby houses! Add a mist kit for optional misting!



White Model	Black Model	Diameter	Variable Speed Capable	Fan Mount	Hp	Volts	Amps	CFM	RPM
VK8	N/A	8"	No	Yes	1/100	115	0.6	450	1550
VK12	VK12-B	12"	Yes	Yes	1/10	115/230	1.3/0.65	1470	1725
VK20	VK20-B	20"	Yes	Yes	1/3	115/230	3.8/1.9	5470	1725
VK24	VK24-B	24"	Yes	Yes	1/2	115/230	4.8/2.4	7860	1725

Note: Other motor, blade, and mount combinations available. Mount Schaefer fan models without OSHA guards seven feet or higher.

FAN CONTROLS

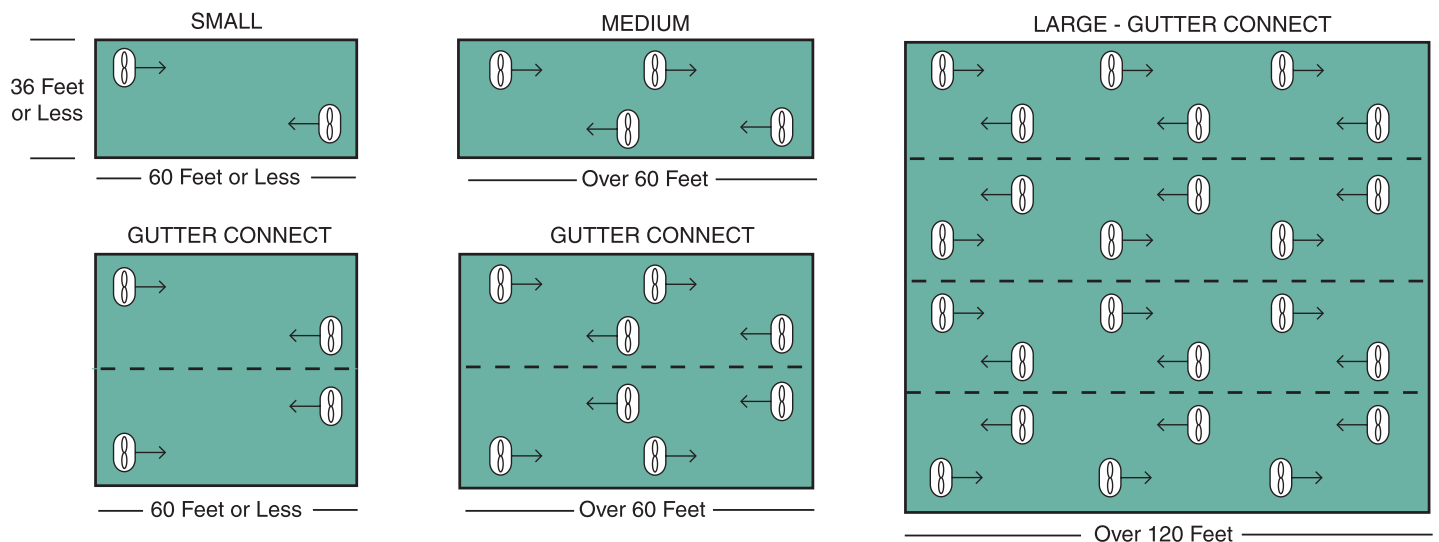
Schaefer offers a broad range of sensors, as well as manual and automatic controls, to allow greenhouse operators to control fans to optimize thermal comfort in their facilities. Other controls and sensors are available.



H-115

MSC-400

SUGGESTED SCHAEFER 12" HORIZONTAL AIR FLOW FAN PLACEMENT





- Exhaust Fans
- Shutters



SLANT WALL BELT-DRIVE EXHAUST FANS

Schaefer's Slant Wall Exhaust Fans are the first choice of growers and other building owners looking for low-cost, high-volume exhaust fans. These fans flush-mount from inside the building and once installed will shed water and snow. Galvanized Exhaust Box Fans are also available.

Light Trap Exhaust Fans are available for light deprivation cooling solutions; call for more information.



365S12

Galvanized Model	Aluminum Model	Diameter	Wings	Phase	Hp	Volts	Amps	CFM@ 0.05" SP	Rough-in (W x H)*
245S12	N/A	24"	5	1	1/2	115/230	4.6/2.3	6100	31" x 31-3/4"
305S12	305AS12	30"	5	1	1/2	115/230	4.6/2.3	7010	37" x 37-3/4"
363S12	N/A	36"	3	1	1/2	115/230	4.6/2.3	9340	43" x 43-3/4"
365S12	365AS12	36"	5	1	1/2	115/230	4.6/2.3	9520	43" x 43-3/4"
425S1	N/A	42"	5	1	1	115/230	9.8/4.9	14,370	49" x 49-3/4"
425S1-2	N/A	42"	5	1	1	230	5.3/3.0	10,970	49" x 49-3/4"
485S1	485AS1	48"	5	1	1	115/230	8.4/4.2	18,600	55" x 55-3/4"

*Rough-in framing tolerance: +1/4" / -0" (+ 6mm / -0) • 54" Slant wall exhaust fans also available with cones for enhanced performance.

Note: Other motor and blade combinations available.

POLYETHYLENE EXHAUST FANS

Schaefer's Poly Exhaust Fans provide an energy-efficient and cost-effective solution for exhausting air and moisture from a diverse range of facilities, including greenhouses, warehouses, and more. Sizes from 9" to 24".



PFM163P13

Model	Diameter	Shutter Material	Wings	Blade Material	Phase	Hp	Volts	Amps	CFM@0.05" SP	Rough-In (W x H)
PFM096P16	9"	PVC	6	Polyethylene	1	1/6	115/230	1.9/1.0	1090	13-3/4" x 14-1/2"
PFM126P13*	12"	PVC	6	Polyethylene	1	1/3	115/230	3.8/1.9	1540	15-3/4" x 16-3/4"
PFM163P13*	16"	PVC	3	Polyethylene	1	1/3	115/230	3.8/1.9	3090	19-1/2" x 20-1/2"
PFM204P12*	20"	PVC	4	Polyethylene	1	1/2	115/230	4.8/2.4	4970	23-1/2" x 24-3/4"
PFM244P12A*	24"	Aluminum	4	Polyethylene	1	1/2	115/230	4.8/2.4	5300	29" x 29-1/2"

* Variable-speed when used with optional speed control not included with fan model

ALUMINUM SHUTTERS

Schaefer's Aluminum Shutters allow airflow in a single direction and are used as building air inlets to feed Schaefer exhaust fans or on exhaust fans, to prevent air entry when the fan is not operating. Sizes from 12" to 66".

STANDARD AND MOTORIZED SHUTTERS

Schaefer's white, exterior-grade PVC shutters are maintenance-free, resistant to rust and corrosion, and have an efficient, aerodynamic design. Louvers are curved for a tight seal when closed and corners are fused together for exceptional strength and durability. Optional shutter motors are available. Sizes from 12" to 27".



Motorized PVC Shutters





— Evaporative Cooling System
— Inflation Blowers



WET WALL EVAPORATIVE COOLING SYSTEM

Schaefer's Wet Wall Evaporative Cooling System, in conjunction with Schaefer exhaust fans, uses the natural cooling process of water evaporation to provide up to 30°F of cooling for large-volume buildings. They are ideal for cooling greenhouses and other large facilities.

The snap-together, "no-leak" PVC system, which includes a supply line, spray line, and reservoir, is easy to install, operate, and maintain. Water that does not evaporate is re-cycled through the pads, so no water is wasted.



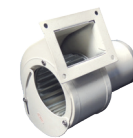
Wet Wall Evaporative

FEATURES and BENEFITS

- Standard wet wall lengths: 10' to 60' in 5' increments
- Standard wet wall heights: Single Stacked Systems 4', 5' and 6' and Double Stacked Systems 8'-12' in 1' increments
- Custom lengths and heights available by special order
- Uncoated, 1-side coated, and 2-side coated pads available in 4" and 6" pad thicknesses lasting up to 5-years
- Choice of 1/3 or 3/4 hp Gould™ pumps; 115V or 230V

INFLATION BLOWERS

Shaded Pole Inflation Blowers have forward-curved wheels and energy-efficient, open, drip-proof motors. These blowers are frequently used for inflating greenhouse polyethylene.



B148-E



B60-E

Model	Description	Imported	Color	Volts	CFM@0.0" SP
B60	Standard	No	Black	115	60
B60-E	Economy	Yes	White	115	60
B148	Standard	No	Black	115	148
B148-E	Economy	Yes	White	115	148

For more information on Schaefer's complete line of ventilation and thermal comfort solutions go to www.schaeferventilation.com



Fiberglass Hood-Style Exhaust Fans



Shutter-Style Exhaust Fans



72" Industrial Circulation Fans



Evaporative Coolers



Propane Cabinet Heater



Forced Air Heaters

AUTHORIZED DISTRIBUTOR



1.800.779.3267 • www.schaeferventilation.com

©2018 Pinnacle Climate Technologies. All rights reserved.
SCXA-901 • GreenhouseBrochure4-18

All information, illustrations, and specifications in this brochure are based on the latest product information available at the time of printing.