

## RLC-510WA

### Smart 5MP 5/2.4 GHz Wi-Fi Security Camera

- Person/Vehicle Detection
- 5MP/4MP Super HD
- 2.4/5 GHz WiFi

## Specifications

| Video & Audio         |                                                                                                               |
|-----------------------|---------------------------------------------------------------------------------------------------------------|
| Image Sensor          | 1/2.7" CMOS Sensor                                                                                            |
| Resolution            | 2560x1920 (5 Megapixels)@20fps                                                                                |
| Lens                  | f=4.0mm fixed, F=2.0                                                                                          |
| Infrared Night Vision | Up to 12 meters (40ft); LED: 18pcs/14mil/850nm (Auto-switching with IR-cut filter)                            |
| Frame Rate            | Main Stream: 2fps - 20fps(default: 20fps);<br>Sub Stream: 4fps - 15fps(default: 10fps)                        |
| Code Rate             | Main Stream: 2048Kbps<br>-5120Kbps(default: 3072Kbps);<br>Sub Stream: 128Kbps<br>-1024Kbps(default: 1024Kbps) |
| Audio                 | Two-way audio                                                                                                 |
| Power Requirements    |                                                                                                               |
| DC Power              | DC 12V/1A                                                                                                     |
| Interface             |                                                                                                               |
| Power Port            | DC power port                                                                                                 |
| Reset Button          | YES                                                                                                           |

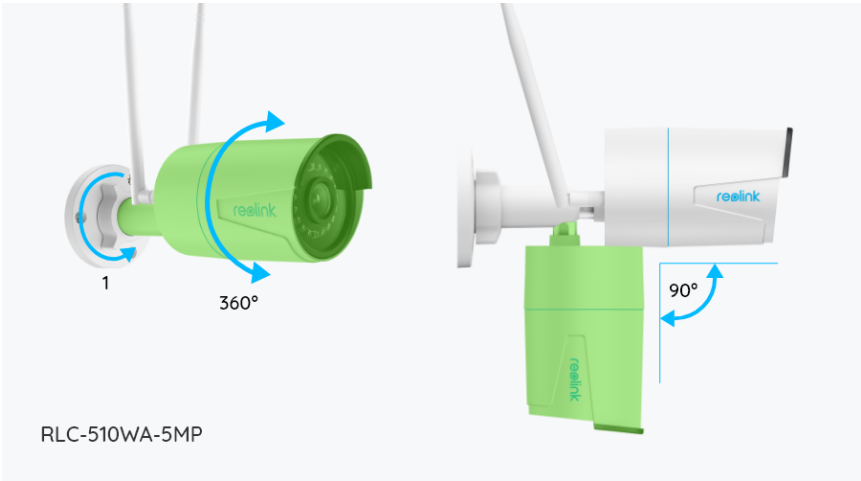
|                            |                                                                                                           |
|----------------------------|-----------------------------------------------------------------------------------------------------------|
| Ethernet Port              | One 10M/100Mbps; RJ45                                                                                     |
| SD Card Slot               | Supports Max. 512GB microSD card;<br>Reolink NVR                                                          |
| Audio In/Out               | Built-in Microphone and Speaker                                                                           |
| <b>Wi-Fi</b>               |                                                                                                           |
| Wireless Standard          | IEEE 802.11 ac/a/b/g/n                                                                                    |
| Operating Frequency        | 2.4GHz/5GHz                                                                                               |
| Wireless Security          | WPA/WPA2                                                                                                  |
| <b>Software</b>            |                                                                                                           |
| Browsers Supported         | Edge, Chrome, Firefox, Safari                                                                             |
| OS Supported               | PC: Windows, Mac OS; Smartphone:<br>iOS, Android                                                          |
| Protocols & Standards      | HTTPS, SSL, TCP/IP, UDP, HTTP, IPv4,<br>UPnP, RTSP, RTMP, ONVIF, SMTP, NTP,<br>DHCP, DNS, DDNS, FTP, P2P  |
| User Access                | Max.20 users (1 admin & 19 user<br>accounts);<br>Max.12 simultaneous streams (2 main &<br>10 sub streams) |
| <b>Other Features</b>      |                                                                                                           |
| Smart Alarm                | Motion detection; Person/vehicle/<br>animal detection                                                     |
| Record Mode                | Motion-triggered recording (Default);<br>Scheduled recording, 24/7 recording                              |
| Time Lapse                 | YES                                                                                                       |
| Smart Home Compatibility   | Google Assistant                                                                                          |
| <b>Working Environment</b> |                                                                                                           |
| Operating Temperature      | -10°C~+55°C (14°F~131°F)                                                                                  |
| Operating Humidity         | 20% ~ 85%                                                                                                 |
| Weatherproof               | IP67                                                                                                      |
| <b>Mechanical</b>          |                                                                                                           |
| Dimension                  | Φ67x186mm                                                                                                 |

|                  |                                                                                                                                       |
|------------------|---------------------------------------------------------------------------------------------------------------------------------------|
| Weight           | 415g                                                                                                                                  |
| <b>Warranty</b>  |                                                                                                                                       |
| Limited Warranty | 2-year limited warranty. For support, visit <a href="https://support.reolink.com/hc/en-us/">https://support.reolink.com/hc/en-us/</a> |

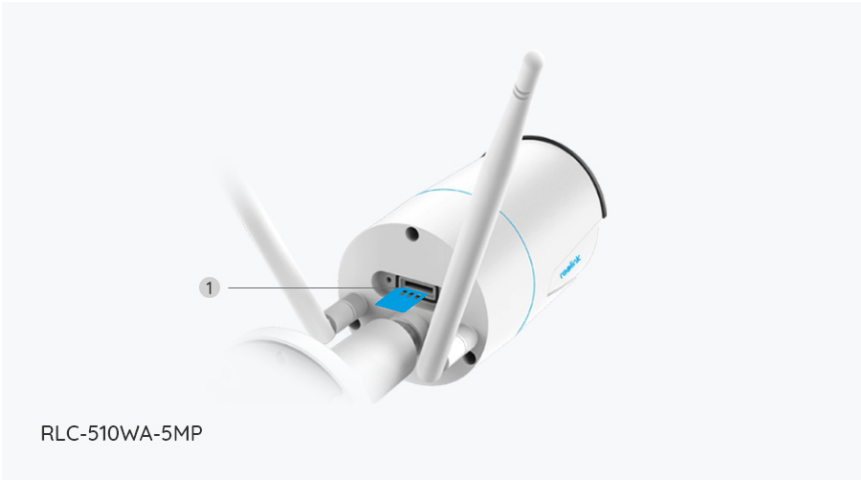
## Gallery & Specs



1. Antenna
2. Mount
3. Metal Aluminum Case
4. IR LED
5. High Definition Lens (f=4.0mm)
6. Daylight Sensor



1. Unscrew it (counter-clockwise) to loosen the bracket and adjust the camera in any direction.
2. After adjustment, twist it back to fix the camera.



1. micro SD Card Slot



1. Power
2. Reset Button
3. Network
4. Waterproof Lid

[www.reolink.com](http://www.reolink.com)