

OP-924 & 925 HANGING SCALES



FEATURES:

- Capacity: 500 to 100,000 lbs
- Die cast construction for harsh environments
- Up to 80 hours of battery life
- Rechargeable battery
- Wireless remote control
- Easy to read LED or LCD display
- Zero, Tare and Gross weighing features
- Selectable units: lbs, kgs
- Wireless indicator for W models
- One year limited warranty

OP-924 STANDARD HANGING SCALE



OP-925 HEAVY DUTY HANGING SCALE



SPECIFICATIONS					
	Product no.	Capacity	Weight	Display	
STANDARD	OP-924A-500	500 x 0.1 lbs	12 lb	LED Red	
	OP-924B-500			LCD Black	
	OP-924A-1,000	1,000 x 0.2 lbs		LED Red	
	OP-924B-1,000			LCD Black	
	OP-924A-1,500	1,500 x 0.5 lbs		LED Red	
	OP-924B-1,500			LCD Black	
	OP-924A-2,000	2,000 x 0.5 lbs		17 lb	LED Red
	OP-924B-2,000				LCD Black
	OP-924A-3,000	3,000 x 0.5 lbs			LED Red
	OP-924B-3,000				LCD Black

OP-925 XL HEAVY DUTY HANGING SCALE 40K

Indicator is LED on one side and LCD on reverse side.



SPECIFICATIONS					
	Product no.	Capacity	Weight	Display	
HEAVY-DUTY	OP-925A-3,000	3,000 x 0.5 lbs	26 lb	LED Red	
	OP-925B-3,000			LCD Black	
	OP-925A-6,000	6,000 x 1 lbs		LED Red	
	OP-925B-6,000			LCD Black	
	OP-925A-10,000	10,000 x 2 lbs		30 lb	LED Red
	OP-925B-10,000				LCD Black
	OP-925A-20,000	20,000 x 5 lbs		60 lb	LED Red
	OP-925B-20,000				LCD Black
XL HD	OP-925A-40,000	40,000 x 10 lbs	190 lb	LED Red	
	OP-925B-40,000			LCD Black	

SPECIFICATIONS				
	Product no.	Capacity	Weight	Display
WIRELESS	OP-925-W-10,000	10K x 2 lbs	110 lb	LCD BLACK
	OP-925-W-20,000	20K x 5 lbs	126 lb	
	OP-925-W-40,000	40K x 10 lbs	200 lb	
	OP-925-W-100,000	100K x 20 lbs	1,040 lb	

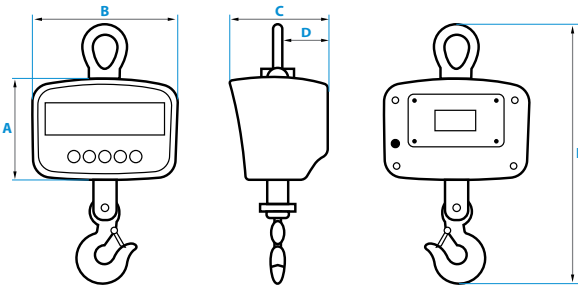
OP-925W WIRELESS CRANE SCALE

Comes with an LCD indicator in a protective carrying case.

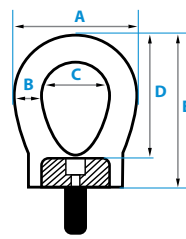


DIMENSIONS

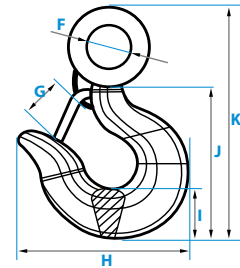
OP-924 SCALE 500 LBS TO 3,000 LBS CAPACITY:



EXTERIOR DIMENSIONS	
A	5.88"
B	8.30"
C	5.45"
D	2.91"
E	15.16"-17.13"

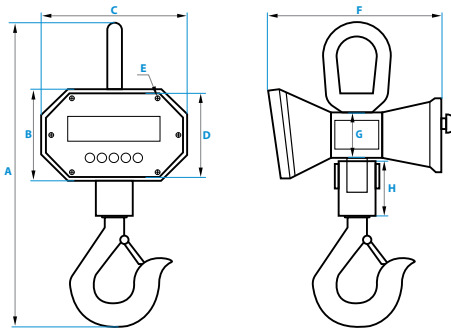


HOOK DIMENSIONS	UP TO 2,000 LBS.			
	A	2.55"	F	0.90"
	B	0.60"	G	0.90"
	C	1.35"	H	2.92"
	D	2.65"	I	0.96"
	E	3.25"	J	3.15"
		K	4.92"	



HOOK DIMENSIONS	OVER 2,000 LBS.			
	A	2.55"	F	1.22"
	B	0.60"	G	1.15"
	C	1.35"	H	3.57"
	D	2.65"	I	1.25"
	E	3.25"	J	3.90"
		K	6.50"	

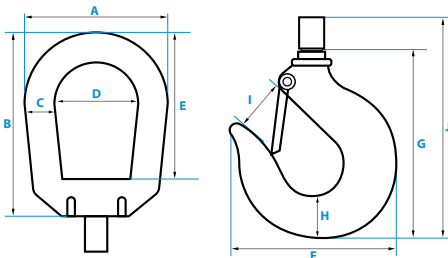
OP-925 SCALE 3,000 LBS TO 40,000 LBS CAPACITY:



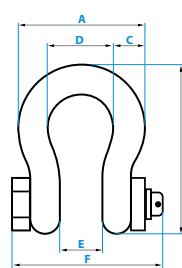
DIMENSIONS	
6K ; 10K ; 20K	
A	18.0" ; 26.0" ; 29.0"
B	6.14"
C	9.83"
D	5.65"
E	0.28"
F	11.21"
G	2.97"
H	3.54" ; 6.50" ; 8.50"

Under 10,000 lbs. ▼

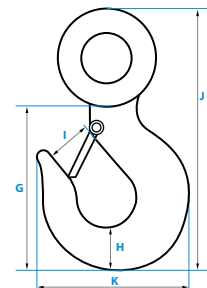
10,000 lbs. And Up ▼



HOOK DIMENSIONS	UP TO 6,000 LBS.			
	A	4.52"	F	4.54"
	B	5.91"	G	5.36"
	C	0.95"	H	1.45"
	D	3.58"	I	1.45"
	E	4.72"	J	6.06"

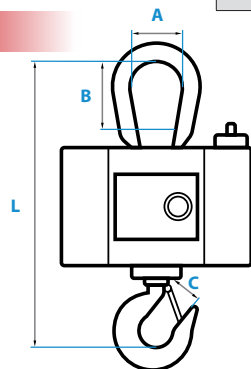


HOOK DIMENSIONS	10,000 LBS.			
	A	5.40"	G	6.40"
	B	7.00"	H	1.91"
	C	1.25"	I	1.65"
	D	2.95"	J	9.50"
	E	1.92"	K	6.00"
F	6.50"			



HOOK DIMENSIONS	20,000 LBS.			
	A	6.00"	G	8.00"
	B	8.00"	H	2.40"
	C	1.40"	I	2.00"
	D	3.21"	J	12.20"
	E	2.21"	K	7.00"
F	7.25"			

OP-925W-WIRELESS



TC95 WIRELESS SCALE DIMENSIONS				
MAX CAP.	A	B	C	L
2,200 lbs	2.5"	4"	1.3"	4"
4,400 lbs	2.5"	4"	1.3"	4"
6,600 lbs	2.5"	4"	1.3"	4"
11,000 lbs	3"	4.5"	1.5"	4.5"

OP-926 S-TYPE LINK SCALE



T901 INDICATOR

FEATURES:

- General weighing for many applications
- Selectable weighing units: lb, kg
- Includes T901 LED indicator
- Indicator functions: Tare, print and peak hold
- 19' load cell cable (longer cables available)
- Eyebolts included
- Indicator upgrade to NEMA 4 stainless steel for washdown applications (call for availability)
- RS232 port for printer or computer

Product no.	Capacity	Weight
TC96-100	100 lb x .01 lb/50 kg	8 lbs
TC96-250	250 lb x .02 lb/120 kg	
TC96-500	500 lb x .05 lb/250 kg	
TC96-1000	1K lb x 0.1 lb/500 kg	
TC96-2000	2K lb x 0.2 lb/1000 kg	
TC96-3000	3K lb x 0.5 lb/1500 kg	11 lbs
TC96-5000	5K lb x 0.5 lb/2500 kg	
TC96-10000	10K lb x 1 lb/5K kg	32 lbs
TC96-20000	20K lb x 2 lb/10K kg	

OUR MOST PRECISE OVERHEAD WEIGHING SCALE. IT CAN SHOW THE DIFFERENCE OF UP TO A 10TH OF A POUND.

UPGRADE TO:



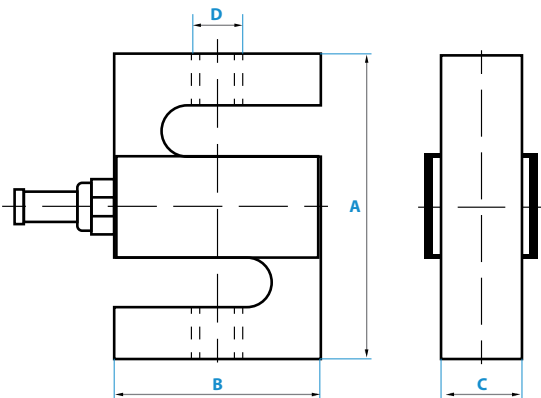
T900-SS
Stainless Steel
Indicator



T900-SL
NEMA 4X S.S.
Washdown Indicator

DIMENSIONS

TC96 SCALE 100 lbs to 20K lbs



RATED CAPACITY	DIMENSIONS			
	A	B	C	D
LB/INCHES				
100 - 200 lbs	2.50	2.00	0.50	1/4-28UNF-2B
250 - 300 lbs	2.50	2.00	0.50	3/8-24UNF-2B
500 - 1,000 lbs	2.50	2.00	0.75	1/2-20UNF-2B
2K - 3K lbs	3.00	2.00	1.00	1/2-20UNF-2B
5K - 10K lbs	4.25	3.00	1.00	3/4-16UNF-2B
15K lbs	5.50	4.00	1.25	1-12UNF-2B
20K lbs	7.00	5.00	2.00	1 1/4-12UNF-2B
KG/MM				
25 kgs	63.50	50.80	12.70	M6
50 - 70 kgs	63.50	50.80	12.70	M6
100 - 700 kgs	63.50	50.80	19.05	M12
1,000 - 1,500 kgs	76.20	50.80	25.40	M12
2,000 - 5,000 kgs	107.95	76.20	25.40	M20x1.5
7,000 kgs	139.70	101.60	31.75	M20x1.5
10,000 kgs	177.80	127.00	50.80	M30x2

OP-927 TENSION LINK SCALE



TUFNER's Tension Link System is designed as a stable, reliable and high accuracy scale to measure the force in your tension line. This scale system can withstand harsh environments and is suitable for tension applications like hanging crane scales, lifting systems and winching. There are openings on both ends of the alloy steel load cell which allow you to connect hooks, shackles, wire ropes, or whatever your rigging needs may be. Our scale is available in capacities ranging from 10,000-200,000 lbs.



T901 INDICATOR

Product no.	Capacity	Weight
TC97-25K	25,000 lbs x 10 lbs	27 lbs
TC97-50K	50,000 lbs x 20 lbs	33 lbs
TC97-100K	100,000 lbs x 50 lbs	46 lbs
TC97-150K	150,000 lbs x 75 lbs	60 lbs
TC97-200K	200,000 lbs x 100 lbs	95 lbs
TC97-250K	250,000 lbs x 100 lbs	100 lbs

FEATURES:

- Cost effective solution for processing, monitoring and controlling overhead loads
- Used with shackles to measure force
- Designed to measure high capacity loads for cranes, hoists and winches
- Alloy steel constructed load cell
- Includes LED or LCD T-901 Indicator
- Large display indicator with rechargeable battery (up to 100 hrs)
- Selectable weighing units: lb and kg
- 26' load cell cable (longer options available)
- Upgrade to T-900 stainless steel Indicator

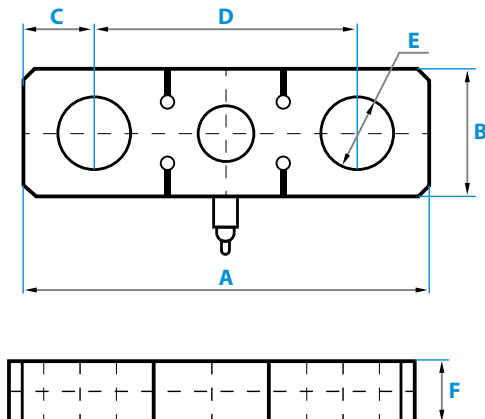
WIRELESS VERSION AVAILABLE



PERFECT FOR CRANES, HOISTS, AND WINCHES AND IDEAL FOR WEIGHING WHEN STANDARD LOAD CELL CABLES CAN BE DAMAGED OR UNREACHABLE.

DIMENSIONS

TC97 SCALE 25K lbs to 250K lbs



RATED CAPACITY	DIMENSIONS					
	A	B	C	D	E	F
LB/INCHES						
25K lbs	11.15	3.55	7.21	1.97	1.50	1.97
50K lbs	13.53	4.33	8.27	2.01	1.69	2.13
100K lbs	16.55	5.12	11.82	2.81	1.97	2.36
150K lbs	19.70	6.30	13.79	3.15	2.36	2.96
200K lbs	21.67	6.70	14.97	3.80	2.76	3.35
250K lbs	23.64	7.09	15.76	4.02	3.15	3.94
KG/MM						
18,144 kgs	283	90	183	50	38	50
22,680 kgs	318	110	210	51	43	54
45,360 kgs	420	130	300	71.40	50	60
68,040 kgs	500	160	350	80	60	75
90,720 kgs	550	170	380	96.40	70	85
113,400 kgs	600	180	400	102	80	100