

OP-923 AXLE SCALE



Optima Scale's OP-923 Axle Scales are used to minimize risk of overweight fines and to ensure trucks are not underloaded for maximum productivity. They offer an affordable alternative to a full size truck scale and are used by trucking companies, the military, and other transport businesses for quick, effective and dependable gathering of axle and gross vehicle weight. The ruggedness and modular design makes them ideal for locations where large permanent scale installations are not feasible. The axle scale can be used with ramps for above ground installations or flush with concrete for a pit-installed permanent application.



SPECIFICATIONS		
Model	OP-923 -84	OP-923 -144
Capacity	60,000 lb x 10 lb	60,000 lb x 10 lb
Ramp Length	7ft	12ft
Size	5.75"H x 30"W 84"L	5.75"H x 30"W 144"L
Weight	650 lbs (each platform)	1114 lbs (each platform)
Power	AC/DC, Built -in rechargeable battery (100 hrs)	
Material	Heavy Duty Steel (Aluminum plates available)	

SCALE FEATURES:

- Used to minimize risk of overweight fines and to ensure trucks are not underloaded for maximum productivity
- Large weighing surface and low profile for vehicle weighing
- Heavy duty steel construction with threaded top plate
- Four premium watertight alloy steel nickel plated load-cells
- Low profile 5.75" height for smooth drive-on/off
- Load-cell capacity is 2.2 times the scale capacity for over-load protection
- 50' quick connecting cables (2) for hostile environments
- Can be used with ramps for above ground installations or flush with concrete for a pit-installed permanent application
- Durable platform with treading for tire grip
- Powder coated yellow paint finish
- Forklift portable
- Custom sizes available

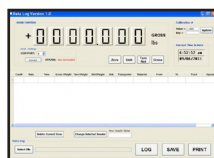
INDICATOR FEATURES:

- Multiple weighing units: (lb/kg/g/oz/lb:oz)
- Gross/Tare/Zero
- Multiple Hold functions
- Count weighing
- Accumulation weighing
- Overload / Underload alarm
- Power saving mode
- Automatic date and time update
- Ability to modify gravity based on different geographical locations
- Splash proof keyboard and display
- Able to connect to a scoreboard
- LED or LCD display option
- NTEP approved for 5,000 divisions
- 1" LED or LCD display with backlight
- Options: Relay & Analog output



Installed at NASA May 2015

OPTIONAL ACCESSORIES:



Optional data logging software



Optional Label Printer



Optional Table Printer



Heavy-duty metal cable with water-proof protective outer coating

Optional scoreboard



Optional Indicator Column