

## INTRODUCTION

This rechargeable battery kit is for use with the Defender® 3000 i-DT33P indicator.



**CAUTION:** Read all safety warnings before installation, making connections, or servicing this equipment. Failure to comply with these warnings could result in personal injury and/or property damage. Retain all instructions for future reference.

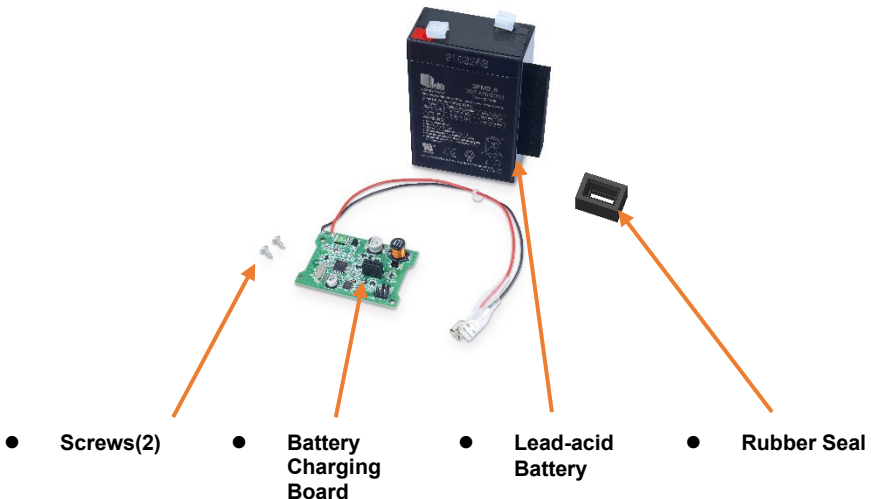
- Do not lay tools or metal parts on top of the battery.
- Verify circuit polarities before making connections.
- Do not dispose of the battery in a fire. The battery may explode.
- Do not open or mutilate the battery. Released electrolyte is harmful to the eyes and skin and may also be toxic.
- Keep sparks, flames and smoking materials away from the battery.
- Store the battery indoors in a clean, dry and cool location. Storage at higher temperatures will result in accelerated rates of self-discharge and possible deterioration of battery performance and life.
- Using the correct tools and wearing rubber gloves will help prevent injury should an accident occur.



Dispose of the lead acid battery according to local laws and regulations.



## KIT CONTENTS



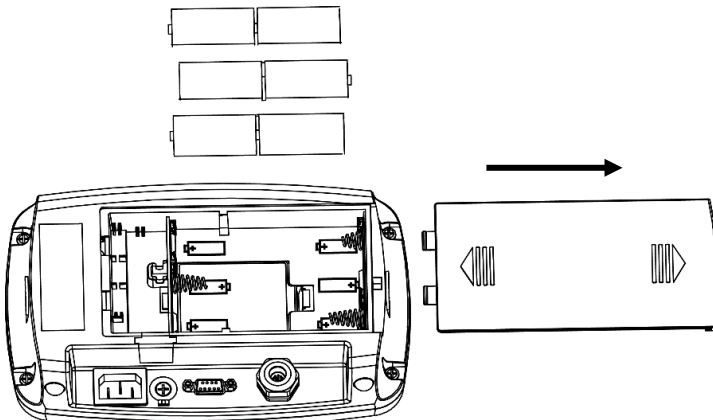
## INSTALLATION

Install the rechargeable battery kit to the indicator as the following.

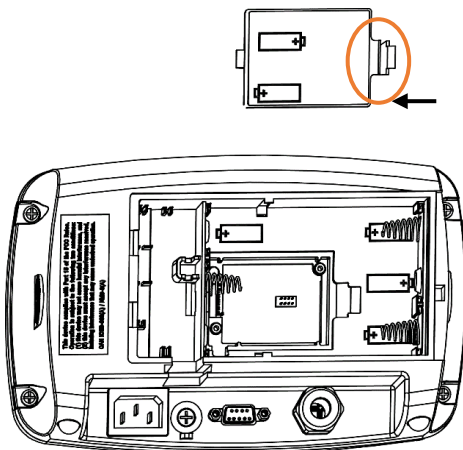


**WARNING: BEFORE INSTALLATION, POWER OFF THE INDICATOR AND REMOVE ALL EXTERNAL AC POWER CONNECTIONS.**

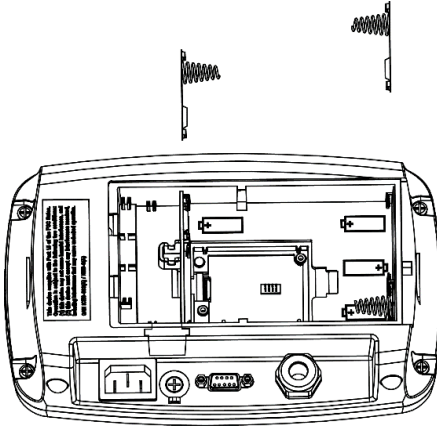
1. Remove the battery cover in the direction of the arrow, and take out dry batteries if used.



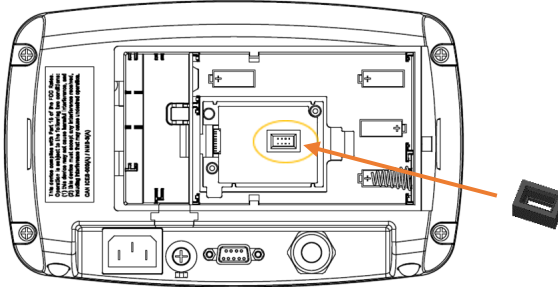
2. Slightly push the end of the charging cover (circled) in the direction of the arrow and take it out.



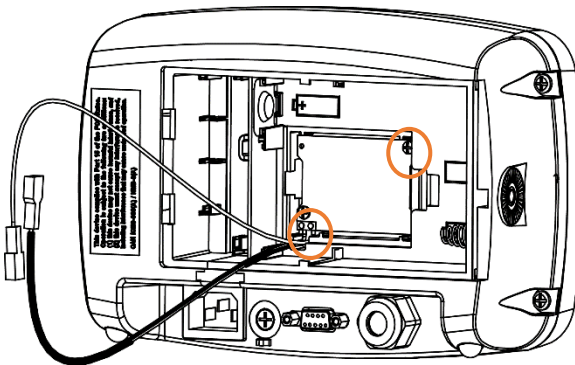
3. Take out two battery connectors upward, and leave the other one in the lower right corner.



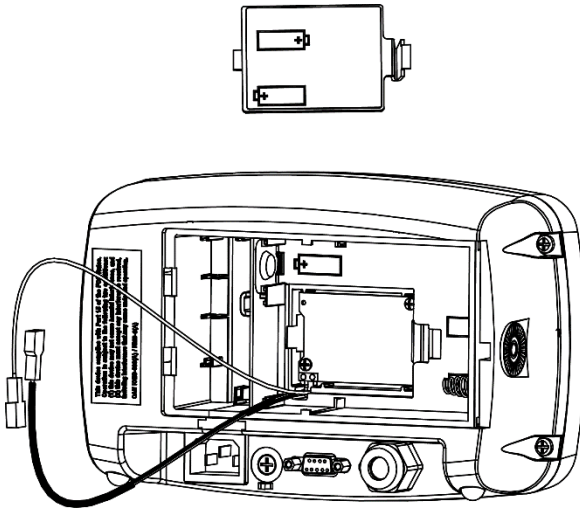
4. Install the rubber seal onto the Lead-acid Battery connector.



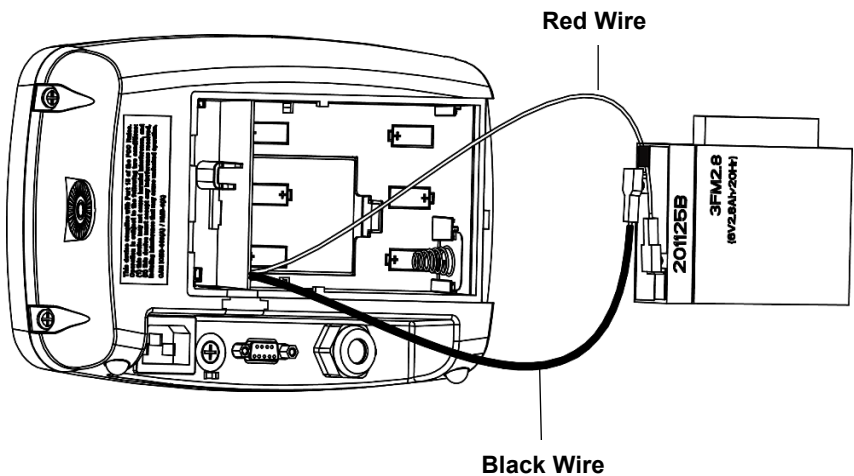
5. Take out the supplied battery charging board, the back of it facing up, and then attach it to the indicator with the two screws (circled).



6. Reinstall the charging cover.



7. Take out the lead-acid battery. Insert the black wire interface on the battery charging board to the battery terminal marked with black on the lead-acid battery, and the red one to the battery terminal marked with red.





## BATTERY

The lead-acid battery will charge automatically while connecting to the power supply. When charging, the battery level indicator on the screen increases or decreases in one grid, two grids, three grids and four grids. The battery level indicator will disappear when the battery is fully charged.

**While operating on battery, the battery symbol indicates the battery status:**



Battery 5%~25% remaining



Battery 25%~50% remaining



Battery 50%~75% remaining



Battery 75%~100% remaining



**Attention:** Before using the indicator for the first time, the internal rechargeable battery should be fully charged for up to 12 hours. The indicator can be operated during the charging process. The battery is protected against overcharging and the indicator can remain connected to the AC power line.



**WARNING:**

Stop charging the battery if charging is not completed within specified time.

Stop using the battery if it becomes abnormally hot, or if there is an odor, discoloration or deformation.

Stop using the battery if abnormal conditions are detected during use, charging or storage.

**IMPORTANT:**

If you have ANY questions concerning safety when working with the battery, contact an authorized OHAUS Service Agent. For Service assistance in the United States, call toll-free 1-800-526-0659 between 8:00 AM and 5:00 PM Eastern Standard Time. An OHAUS Product Service Specialist will be available to assist you. Outside the USA, please visit our website [www.ohaus.com](http://www.ohaus.com) to locate the OHAUS office nearest you.