

PJ-H30

SERIES 303 — High-Accuracy Profile Projectors

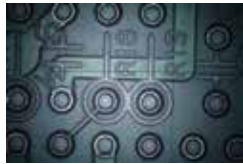
By separating axial motion, and stabilizing the XY measuring table in the vertical direction, high measuring accuracy of $(3+0.02L)\mu\text{m}$ has been achieved on the PJ-H30 Series Profile Projectors. Focusing is accomplished by moving the screen head itself up and down with the hand wheel or motorized unit. The power focusing (PJ-H30D type) provides higher performance.

FEATURES

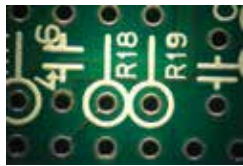
- Newly designed optical system with high NA lenses provides drastically brighter and clearer screen images during surface illumination.
- The three-lens mounting turret includes a 10X lens as standard. Four types of projection lenses (5X, 20X, 50X, 100X) are available.



Switchable surface illumination: vertical or oblique



Vertical illumination

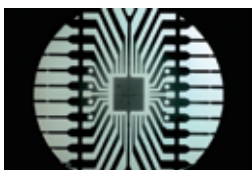
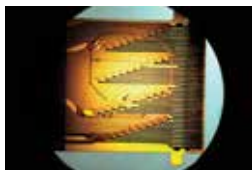
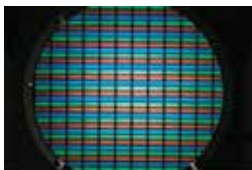


Oblique illumination

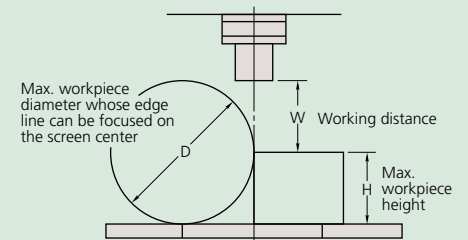


PJ-H30A3017B

XY stage travel range: 12x7" / 300x170mm



Projection Capacity



Unit: mm

	Magnification				
	5X	10X	20X	50X	100X
View field	ø61.2	ø30.6	ø15.3	ø6.12	ø3.06
H	105	105	105	105	105
W	66	70.5	56.5	50	50
D	148	197	137	114	114

Optional Accessories

172-271:	5X projection lens
172-472:	10X projection lens (standard accessory)
172-473:	20X projection lens
172-474:	50X projection lens
172-475:	100X projection lens
172-116:	Standard scale (50mm)
172-117:	Standard scale (2")
172-118:	Reading scale (200mm)
172-161:	Reading scale (300mm)
172-119:	Reading scale (8")
172-162:	Reading scale (12")
12AAG981:	Green filter
172-269:	Machine stand
512305:	Halogen bulb (24V, 150W) (standard accessory)
383876:	Vinyl cover (standard accessory)

Fixture and Stage Accessories

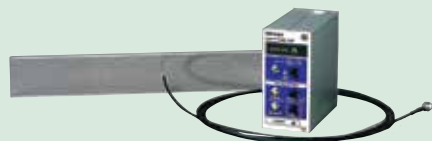
172-198:	Rotary table (Effective diameter: 4" / 100mm)
176-305:	Rotary table (Effective diameter: 7.2" / 183mm)
176-306:	Rotary table (Effective diameter: 9.4" / 240mm)
176-105:	Swivel center support (Max. workpiece dia.: 2.8" / 70mm)
172-197:	Swivel center support (Max. workpiece dia.: 3.1" / 80mm)
176-107:	Holder with clamp
172-378:	V-block with clamp (Max. workpiece dia.: 1" / 25mm)
176-317:	Fixture mount adapter C
176-304:	Fixture mount adapter A

Availability	Models	
	PJ-H30A1010B	PJ-H30A2017B
	PJ-H30D1010B	PJ-H30D2017B
	PJ-H30A2010B	PJ-H30A3017B
	PJ-H30D2010B	PJ-H30D3017B
172-198	✓**	✓****
176-305	✓**	
176-306		✓****
176-107 *	✓**	✓****
172-378 *	✓**	✓****
172-197 *	✓**	✓****
176-105	✓***	✓****

*: Able to attach to a Rotary table 172-198 or 176-305 (172-197 can only attach to 176-305).
 **: Fixture mount adapter C (176-317) is required.
 ***: Rotary table (172-198) is required.
 ****: Fixture mount adapter A (176-304) is required.

QM-Data200

264-155A: Stand-mount type
264-156A: Arm-mount type*
 *Attachment stand (12AAG982) is required.
 2-D data processing unit.
 (Refer to page I-25 for more details.)



332-151: Optoeye
 Edge detection system for QM-Data200
12AAE671: Detector Attachment

Manual Focus type	Model No.	PJ-H30A1010B	PJ-H30A2010B	PJ-H30A2017B	PJ-H30A3017B
	Order No.	303-712-1A	303-713-1A	303-714-1A	303-715-1A
Power Focus, built-in OPTOEYE type	Model No.	PJ-H30D1010B	PJ-H30D2010B	PJ-H30D2017B	PJ-H30D3017B
	Order No.	303-732-1A	303-733-1A	303-734-1A	303-735-1A
Projected image	Erect image				
Protractor screen	Effective diameter	12" / 306mm			
	Screen material	Fine ground glass			
	Reference line	Cross hair line			
	Screen rotation	±360°, fine feed and clamp			
	Angle display (LED)	Resolution: 1° or 0.01° (switchable), Range: ±370°, Functions: Absolute/incremental mode switching, Zero set			
Projection lens	Standard accessory: 10x (172-472), Optional accessories: 2X, 5X, 20X, 50X, 100X				
Lens mount	3-lenses mounting turret				
Magnification accuracy	Contour illumination	±0.1% or less			
	Surface illumination	±0.15% or less			
Contour illumination	Light source	Halogen bulb (24V 150W)			
	Optical system	Zoom telecentric system			
	Functions	Brightness adjustment, Heat-absorbing filter, Cooling fan			
Surface illumination	Light source	Halogen bulb (24V 150W)			
	Optical system	Vertical / Oblique illumination with an adjustable condenser lens			
	Functions	Non-stepped brightness adjustment, Heat-absorbing filter, Cooling fan			
	XY Range	4 x 4" 100 x 100mm	8 x 4" 200 x 100mm	8 x 6.7" 200 x 170mm	12 x 6.7" 300 x 170mm
	Resolution	.0001" / 0.001mm			
Measuring unit	Built-in Linear scale				
Table size		11.8 x 9.4" 300 x 240mm	13.8 x 11" 350 x 280mm	16.1 x 13.5" 410 x 342mm	20 x 13.5" 510 x 342mm
	Effective table area	7.1 x 5.9" 180 x 150mm	9.8 x 5.9" 250 x 150mm	10.6 x 9.4" 270 x 240mm	14.6 x 9.4" 370 x 240mm
Max. workpiece ht.	4.1" / 105mm				
Max. workpiece load	22lbs / 10kg	22lbs / 10kg	44 lbs / 20kg	44 lbs / 20kg	
Power supply	120V AC, 50/60Hz				
Mass	391lbs / 176kg	396lbs / 178kg	556lbs / 205kg	471lbs / 212kg	
Standard accessories	10X projection lens set, masking shield, power cord, halogen bulb, tube fuse, grounding wire, allen wrench, vinyl cover				

DIMENSIONS

