



No-Lead



CA. Certified



MERRILL
MANUFACTURING

2

STAINLESS STEEL SMCK PITLESS KITS

CLEAR WELL PITLESS KITS - Since 1991

A quality pitless adapter kit. The flipper series is made of quality stainless steel for years of service. MERRILL'S SMCK Pitless Kit gives you a clear well with no obstructions when pulling pump. A True Quality Installation.

FEATURES / BENEFITS

- CERTIFIED WATERTIGHT PITLESS KITS AND CAPS** - Tested and approved by Pitless Adapter Standard PAS-1, PAS-2, PAS-97(2019)(R 2023), ASSE Standard #1093-2019(R 2023) and Illinois Code.
BENEFIT - Approved and recommended by all stringent state codes.
- POSITIVE MECHANICAL SEAL** by simply turning the stainless steel screw.
BENEFIT - Positive operation after years of service.
- FULL DIAMETER ACCESS TO WELL** - No obstructions inside well that may need to be removed before working on well - common problem with pitless adapters.
BENEFIT - Simple, fast installation plus no future digging to remove adapters.
- LARGE THICK O-RING SEAL** assures watertight seal around hole cut in casing.
BENEFIT - Insures seal to inside of casing.
- DISCHARGE HUB CLAMPS AROUND CASING** all stainless steel U-Strap to prevent distortion of plastic casing if overtightened.
BENEFIT - Protects from installation problems.
- 3 PART KIT** consists of discharge hub, internal parts, and ventilated or watertight cap.
BENEFIT - Complete - no cap to add - all in one box.
- USE EXISTING CASING - PLASTIC OR STEEL** - Low cost and most of the advantages of pitless units.
BENEFIT - No restriction on casing material.
- HEAVY DUTY GALVANIZED IRON SUPPORT BAR** Holds 160% more weight than aluminum support bar by other manufacturers, and holds more weight than slide together type pitless adapters. It also minimizes danger of losing pump or pipe down well. The weight of the pump, pipe, and water is supported by the bar which uses the top of the casing, not just a small part of the side wall like pitless adapters. Merrill support bar also has a ground screw.
BENEFIT - Safer and holds more weight, if you have any questions on weight limits for the SMCK Series - Call Merrill.
- WATER SYSTEM EASILY DRAINED** by turning the stainless steel screw inside pull pipe so entire water system outside well could drain without pulling the pump, impossible with most other pitless kits and pitless adapters.
BENEFIT - Simple answer to draining or seasonal use.
- STAINLESS STEEL ELBOW FITTING** available for discharge



Stainless Steel
Discharge Fitting
Available
SSHE1000 or SSHE125



Note: Illinois
State Approved



NOTE: Dual adhesive method used to adhere O-ring to discharge.
Strong short term bond (current adhesive) holds while strong long term "sticky" bond with new adhesive cures.



SMCK410/414

SMCK510/514

SMCK610/614

SMCK Stainless Steel Pitless Kits

Order No.	UPC Bar Code (Qty. 1)	Drop Pipe & Discharge	Hole Saw	Material	Well Size I.D. / O. D.	Approx. Wt./Lbs.
SMCK410	6 42367 06742 7	1"	1"	Stainless Steel	4.0"/4.5"	7.7
SMCK414	6 42367 06743 4	1-1/4"	1-1/4"	Stainless Steel	4.0"/4.5"	7.5
SMCK510	6 42367 06745 8	1"	1"	Stainless Steel	5.0"/5.6"	9.3
SMCK514	6 42367 06744 1	1-1/4"	1-1/4"	Stainless Steel	5.0"/5.6"	8.9
SMCK610	6 42367 06988 9	1"	1"	Stainless Steel	6.0"/6.6"	11.1
SMCK614	6 42367 07000 7	1-1/4"	1-1/4"	Stainless Steel	6.0"/6.6"	10.3

NOTE: All Pitless Kits listed above have passed the Pitless Adapter Standard PAS-1, PAS-2, PAS-97(2019)(R 2023), ASSE Standard #1093-2019(R 2023) and Illinois code.

NOTE: Call Merrill for any questions on weight limits for SMCK Pitless Kits.



WARNING: This product meets Federal USA Drinking Water requirements but has not been specifically tested or approved as no-lead in the State of California.



SSHE1000

Stainless Steel Elbow Discharge Fittings

Order No.	UPC Bar Code (Qty. 1)	Insert MIP Size x Size
SSHE1000	6 42367 12117 4	1" x 1"
SSHE125	6 42367 12115 0	1-1/4" x 1-1/4"

2



Note: Illinois
State Approved



MERRILL

MANUFACTURING



No-Lead

STAINLESS STEEL SMCK PITLESS KITS



VC Series Vent Cap
1" Conduit



WC Series
Watertight Cap
Tapped For 1" Conduit



WCB Series
Watertight Cap
Tapped For 1-1/2" Conduit



WCI Series Watertight
Cap (for 6" only)
Tapped For 1" Conduit



WCO Series
Watertight Cap
Tapped for 1" Conduit



WCOP Series
Watertight Cap
Tapped For 1" Conduit



WCOPP Series
Watertight Cap
Plastic Top - PVC Base



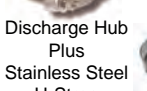
WCP Series Cap



Support Bar



Pitless Body



Discharge Hub
Plus



Stainless Steel
U-Strap



Stainless Steel
U-Strap

NOTE	Product I.D.	Standard	Product I.D.	Drop/Discharge
Order No. Breakdown	SMCK - Merrill Clear Well Kit	U-Strap	4 - For 4" I.D. Casing	10 - For 1" Drop and Discharge
SMCK Stainless Steel Pitless Kits with Well Cap				

Order No.	UPC Bar	Well Size	Discharge	Well Cap Included
No.	Code(Qty. 1)	I.D.		
SMCK410	6 42367 06742 7	4"	1"	None
SMCK410VC	6 42367 06767 0	4"	1"	VC Series Vent Cap
SMCK410WC	6 42367 06768 7	4"	1"	WC Series Watertight Cap
SMCK410WCB	6 42367 06769 4	4"	1"	WCB Series Watertight Cap
SMCK410WCOS	6 42367 06771 7	4"	1"	WCO Series Watertight Cap
SMCK410WCOG	6 42367 06772 4	4"	1"	WCO Series Watertight Cap with Ground
SMCK410WCOP	6 42367 06773 1	4"	1"	WCOP Series Watertight Cap
SMCK410WCO4P	6 42367 45234 6	4"	1"	WCOPP Series Watertight Plastic Cap
SMCK414	6 42367 06743 4	4"	1-1/4"	None
SMCK414VC	6 42367 06781 6	4"	1-1/4"	VC Series Vent Cap
SMCK414WC	6 42367 06782 3	4"	1-1/4"	WC Series Watertight Cap
SMCK414WCB	6 42367 06783 0	4"	1-1/4"	WCB Series Watertight Cap
SMCK414WCOS	6 42367 06785 4	4"	1-1/4"	WCO Series Watertight Cap
SMCK414WCOG	6 42367 06786 1	4"	1-1/4"	WCO Series Watertight Cap with Ground
SMCK414WCOP	6 42367 06787 8	4"	1-1/4"	WCOP Series Watertight Cap
SMCK414WCO4P	6 42367 45235 3	4"	1-1/4"	WCOPP Series Watertight Plastic Cap
SMCKS45010B	6 42367 42324 7	4-1/2"	1"	None
SMCKS45010P	6 42367 43345 1	4-1/2"	1"	None (Deep Well 2,000+ lbs.)
SMCKS45014B	6 42367 45257 5	4-1/2"	1-1/4"	None
SMCKS45014P	6 42367 45412 8	4-1/2"	1-1/4"	None (Deep Well 2,000+ lbs.)
SMCK510	6 42367 06745 8	5"	1"	None
SMCK510VC	6 42367 06795 3	5"	1"	VC Series Vent Cap
SMCK510WC	6 42367 06796 0	5"	1"	WC Series Watertight Cap
SMCK510WCB	6 42367 06797 7	5"	1"	WCB Series Watertight Cap
SMCK510WCOS	6 42367 06798 4	5"	1"	WCO Series Watertight Cap
SMCK510WCOG	6 42367 06799 1	5"	1"	WCO Series Watertight Cap with Ground
SMCK510WCOP	6 42367 06800 4	5"	1"	WCOP Series Watertight Cap
SMCK510WCOPG	6 42367 06801 1	5"	1"	WCOP Series Watertight Cap with Ground
SMCK510WCP	6 42367 06802 8	5"	1"	WCP Series Watertight Cap
SMCK510WCO4P	6 42367 45236 0	5"	1"	WCOPP Series Watertight Plastic Cap
SMCK514	6 42367 06744 1	5"	1-1/4"	None
SMCK514VC	6 42367 06811 0	5"	1-1/4"	VC Series Vent Cap
SMCK514WC	6 42367 06812 7	5"	1-1/4"	WC Series Watertight Cap
SMCK514WCB	6 42367 06813 4	5"	1-1/4"	WCB Series Watertight Cap
SMCK514WCOS	6 42367 06814 1	5"	1-1/4"	WCO Series Watertight Cap
SMCK514WCOG	6 42367 06815 8	5"	1-1/4"	WCO Series Watertight Cap with Ground
SMCK514WCOP	6 42367 06816 5	5"	1-1/4"	WCOP Series Watertight Cap
SMCK514WCOPG	6 42367 06817 2	5"	1-1/4"	WCOP Series Watertight Cap with Ground
SMCK514WCP	6 42367 06818 9	5"	1-1/4"	WCP Series Watertight Cap
SMCK514WCO4P	6 42367 45237 7	5"	1-1/4"	WCOPP Series Watertight Plastic Cap
SMCK610	6 42367 06988 9	6"	1"	None
SMCK610VC	6 42367 06989 6	6"	1"	VC Series Vent Cap
SMCK610WC	6 42367 06990 2	6"	1"	WC Series Watertight Cap
SMCK610WCB	6 42367 06991 9	6"	1"	WCB Series Watertight Cap
SMCK610WCI	6 42367 07012 0	6"	1"	WCI Series Watertight Cap
SMCK610WCOS	6 42367 06993 3	6"	1"	WCO Series Watertight Cap
SMCK610WCOG	6 42367 06992 6	6"	1"	WCO Series Watertight Cap with Ground
SMCK614	6 42367 07000 7	6"	1-1/4"	None
SMCK614VC	6 42367 07001 4	6"	1-1/4"	VC Series Vent Cap
SMCK614WC	6 42367 07002 1	6"	1-1/4"	WC Series Watertight Cap
SMCK614WCB	6 42367 07003 8	6"	1-1/4"	WCB Series Watertight Cap
SMCK614WCI	6 42367 07014 4	6"	1-1/4"	WCI Series Watertight Cap
SMCK614WCOS	6 42367 07005 2	6"	1-1/4"	WCO Series Watertight Cap
SMCK614WCOG	6 42367 07004 5	6"	1-1/4"	WCO Series Watertight Cap with Ground

NOTE: Well Caps may be ordered to go along with SMCK Pitless Kits to top off your well casing and ensure a sanitary seal.



WARNING: This product meets Federal USA Drinking Water requirements but has not been specifically tested or approved as no-lead in the State of California.



No-Lead



MERRILL
MANUFACTURING

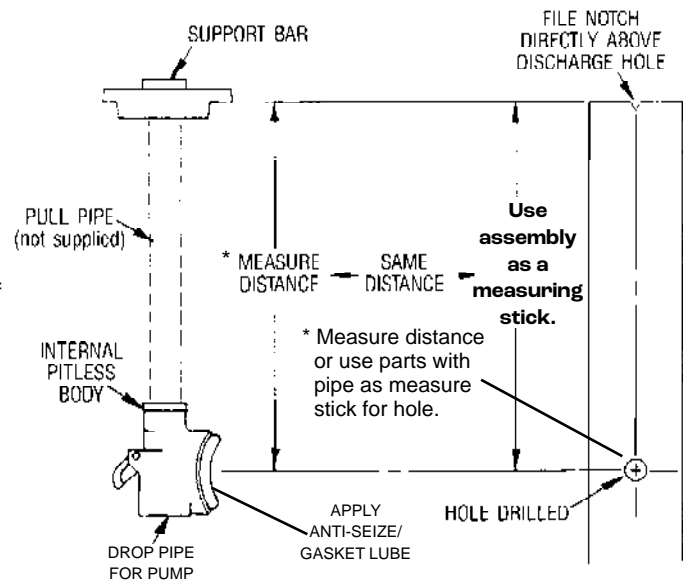
2

STAINLESS STEEL SMCK PITLESS KITS

INSTALLATION INSTRUCTIONS

- (1) Cut and thread 1" pull pipe. (See chart for length). Assemble support bar, pull pipe, and pitless body. Be sure that arrow on support bar and discharge hole on pitless body are in line with each other.
- (2) Cut a piece of 1/2" pipe 3" longer than pull pipe and flatten one end to fit stainless steel screw or weld on adjustment tool to one end of 1/2" pipe.
- (3) Measure distance from bottom of support bar to center of discharge hub, or **use assembly as a measuring stick**.
- (4) Drill hole in casing, the same measured distance as above:
 - 4" casing - 1-1/4" hole or smaller
 - 4-1/2" casing - 1-1/4" hole or smaller
 - 5" casing - 1-1/4" hole or smaller
 - 6" casing - 1-1/4" hole or smaller
- (5) Notch or mark top of casing directly above discharge hole.
- (6) Clamp discharge hub around casing to assure watertight seal around discharge hole.
- (7) Attach pump and drop pipe to pitless body, apply **Anti Seize/Gasket Lube** to O-Ring, and lower into casing.
- (8) Line up mark on support bar with notch cut in casing.
- (9) Turn stainless steel screw clockwise until O-Ring seals on inner wall of casing.
- (10) Complete installation by installing watertight or ventilated cap on top of well casing, depending on state well code. SMCK Pitless Kit is now installed.

NOTE: When pulling pump or installing pump, make sure that the stainless steel screw on pitless body is turned (counter-clockwise) so the lever can be pushed in as far as necessary.



Pull Pipe Length	Desired Bury Depth	Pull Pipe Length	Desired Bury Depth
22"	1'	70"	5'
34"	2'	82"	6'
46"	3'	94"	7'
58"	4'	106"	8'

Installation tool available at no charge to help make installation very easy.



Part No. MCKADJTOOL

PARTS LIST

Parts Description	Stainless Steel SMCK Flipper Series		
	4" Part No.	5" Part No.	6" Part No.
Support Bar	MCK4SB	MCK5SB	MCK6SB
Thumb Screw - Stainless Steel	MCKSS	MCKSS	MCKSS
Internal Pitless Body - 1" Stainless Steel	SMCKB410	SMCKB510	SMCKB610
Internal Pitless Body - 1-1/4" Stainless Steel	SMCKB414	SMCKB514	SMCKB614
Flipper - Stainless Steel	SMCKF400	SMCKF500	SMCKF600
Pivot Pin - Stainless Steel	MCKPP	MCKPP	MCKPP
Discharge Hub w/O-Ring - 1" Stainless Steel	SMCKH410	SMCKH510	SMCKH610
Discharge Hub w/O-Ring - 1-1/4" Stainless Steel	SMCKH414	SMCKH514	SMCKH614
O-Ring Seal	MCKOR	MCKOR	MCKOR
Stainless Steel U-Strap w/nuts	US4SS	US5SS	US6SS



Support Bar



Pitless Body



4", 5" or 6" Stainless Steel U-Strap



MERRILL
MANUFACTURING



WARNING: This product meets Federal USA Drinking Water requirements but has not been specifically tested or approved as no-lead in the State of California.