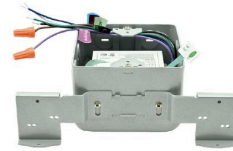
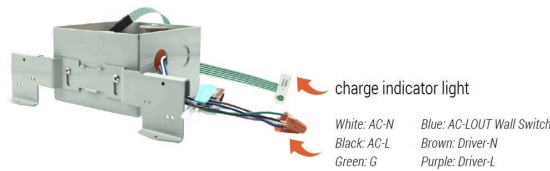
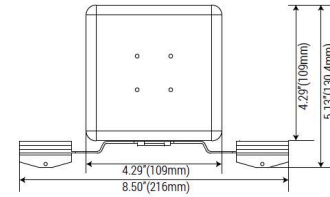
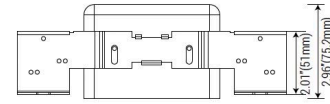
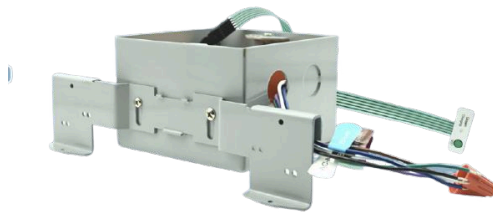


New Construction Emergency Battery Backup

DL-BBU-DV1-13W

Project: _____ Location: _____
 Date: _____ Part #: _____
 Notes: _____



Specs and Operation

DESCRIPTION

The emergency LED driver provides reliable backup **for surface mount downlights and disc lights**, ensuring at least 90 minutes of operation during power outages. It automatically switches to charging mode when power is restored, making it ideal for hospitals, offices, schools, and public buildings.

TECHNICAL SPECIFICATIONS

- Model: DL-BBU-DV1-13W
- Adaptive Power: 28W Max
- Emergency Power: 13W
- Input Voltage: AC 120V, ≤ AC 100V
- Power Frequency: 60Hz
- Battery Capacity: 2600mAh
- Emergency Time: 90 minutes
- Initial Charge Time: 24 hours
- Compatible Lamp Types: Surface Mount Downlights
- IP Rating: IP20
- LED Indicator: Green indicator
- Battery Type: Li-ion
- Finish: Grey
- Dimensions: 8.50" * 5.13" * 2.96" (216 * 130.4 * 75.2mm)
- Net Weight: 1.07 KG
- Operating Temperature: (32°F ~ 122°F) / 0 ~ 50°C
- Warranty: 5 years

OPERATIONAL INFORMATION

- Testing: During AC operation, press the test button to test emergency mode.
- Emergency Operation: If the test button doesn't work, AC power is available, and the LED load operates normally.
- Standby Mode: Blinking green light indicates battery charging during standby.
- Emergency Mode: The green light turns off when AC power is interrupted, and the system switches to emergency mode automatically.
- Charging Mode: Once AC power is restored, the driver switches back to AC mode, the green light flashes, and a steady green indicates a fully charged battery.

SWITCH TEST & FEATURES

- Direct connection to AC input of LED fixtures.
- Supports surface mount installation, compatible with 2.75" or 3.5" J-Box.