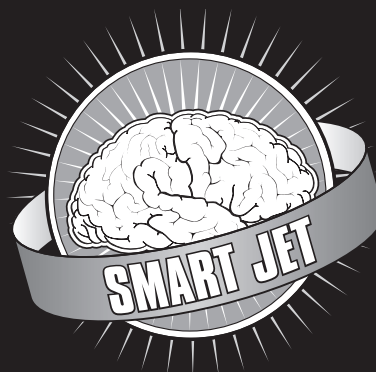


iwata



IS800
IS800DE IS800SA
IS800UK IS800JP



IS850
IS850AU/SH
IS850DE IS850SA
IS850UK IS850JP

OPERATING INSTRUCTION MANUAL

NEED ASSISTANCE?

If you have any issues or warranty service questions, contact your local ANEST IWATA affiliate before returning to your place of purchase.

ANEST IWATA AUSTRALIA PTY LTD.

Mt. Druitt, NSW
+61-(02)-9853-2000
www.anest-iwata.com.au

ANEST IWATA CORPORATION

Yokohama, Japan
+81-(0)45-591-1111
www.anest-iwata.co.jp

ANEST IWATA (U.K.) LTD.

Neots Cambs, England
+44-(0)1480-405419
www.anest-iwata.co.uk

ANEST IWATA-MEDEA, INC.

Portland, Oregon U.S.A.
+1-503-253-7308 (M-F)
iwata.support@iwata-medea.com
www.iwata-airbrush.com

ANEST IWATA MOTHERSON LTD.

Uttar Pradesh, India
+91-(0)120-4600500 / 14 / 17
www.anest-iwata.co.jp

ANEST IWATA RUS LLC

Moscow, Russia
+7-495-938-77-28
www.anestiwata.ru

ANEST IWATA SHANGHAI

Shanghai, China
+86-(0)21-6407-9713 / 15 / 16
www.anest-iwata-sh.com

ANEST IWATA SOUTH AFRICA (PTY) LTD.

Johannesburg, Republic of South Africa
+27-11-463-2169/2265/2223
www.anest-iwata.co.za

ANEST IWATA SOUTH-EAST ASIA CO., LTD.

Bangkok, Thailand
+66-(0)-2643-2870
www.anest-iwatasoutheastasia.com

ANEST IWATA STRATEGIC CENTER

Cardano al Campo, Italy
+39-0331-733120
www.anest-iwataeu.com

CENTURY TRADING CO., LTD.

Seoul, Korea
82-2-2163-0300
www.centradng.co.kr

CREATEX HANDELS-GmbH

Kaltenkirchen, Germany
+49 (0) 4191 88277
info@createx.de
www.Createx.de

Before operation, read this manual as it includes important warnings and cautions for safe operation.

Store in convenient place for immediate and future reading.

INSPECT PRODUCT/ACCESSORIES

- Check that model name is as ordered, with proper voltage for your region.

NOTE: Model/Voltage/Serial number label found most commonly on bottom side of compressor.

- Check that compressor and all included accessories are free of defect or damage.

NOTE: Refer to the following pages for items included with your compressor.

WARNING

- Recommended for airbrush application only.
- Not recommended for outdoor use.

NOTE: Unit not designed for contact with water as it can cause a short circuit/fire or injury. During dry conditions compressor may intake dust or other particles interfering in proper operation or lifespan.

- Not for use with respiratory and/or life support equipment.
- Use in temperatures between 32°-104°F (0°-40°C) during operation.

NOTE: Outside of these specified temperatures components may freeze or experience early wear/damage resulting in shorter lifespan of product.

- Use a properly grounded outlet.

NOTE: Use of non grounded outlets could result in electric shock or fire.

- Turn off unit and remove power plug from electrical source before performing maintenance or troubleshooting to avoid injury.
- Not to be used to compress gases other than air.

CAUTION

- Always work in well-ventilated areas away from volatile, or flammable fluids and vapors.
- Stop operation immediately should you hear abnormal sounds or vibrations such as clanking.
- Compressor can become hot during prolonged use. Avoid running continuously without a break for more than 40 minutes at a time. Use caution when handling compressor at this time.
- Motor is thermally protected and automatically shuts off when overheated. If this occurs, turn compressor off and wait to restart until unit has cooled down.
- DO NOT place air compressor between you and your work area or directly under an area being sprayed. This could allow for over spray to flow into air intake of compressor causing internal damage to unit.

NOTE: Suggested use of an air filter is highly recommended to minimize intake of overspray, moisture, dust...etc.

Minimizing potential interference of proper compressor operation.

NOTE ON MOISTURE

Moisture will condense in the clear glass of the moisture trap assembly. To release, open the pressure adjustment valve knob with a paper towel pressed underneath or by pressing up on the moisture drain valve at the bottom of the moisture trap glass depending on your compressor model.

During extra humid conditions, condensation may build up and rest in hose(s). Remove air hose(s) at end of session and drape overnight to allow to drain/dry excess moisture.

Note: How often you need this will vary depending on humidity and amount of use.

IS800 SPRINT JET — ASSEMBLY INSTRUCTIONS

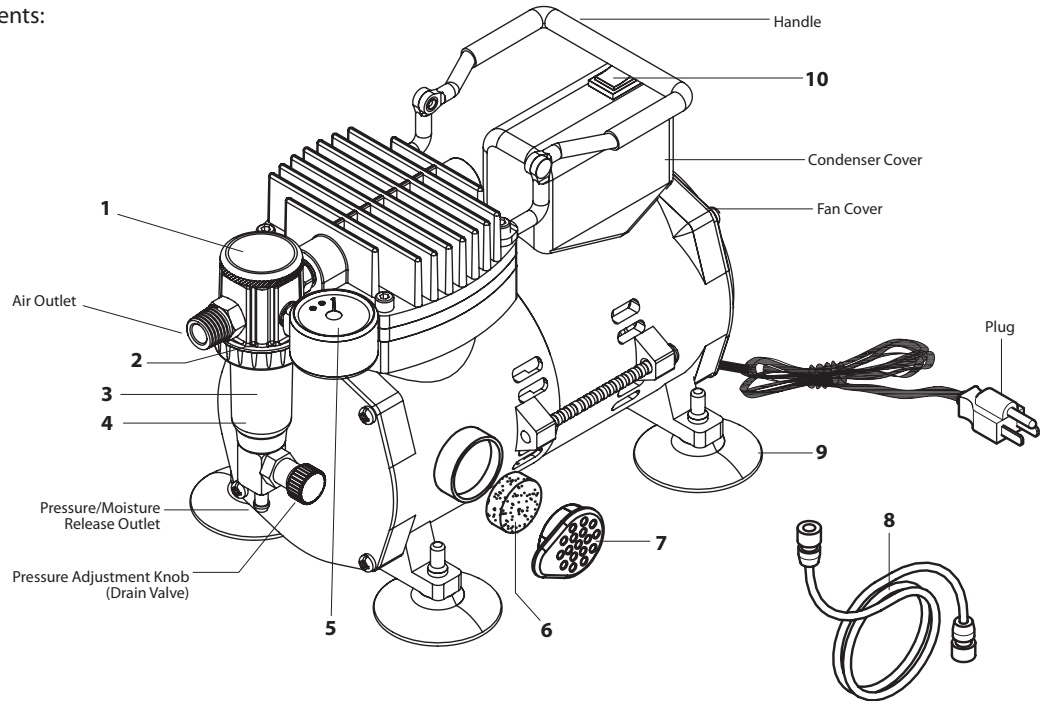
Unpack the compressor and all components:

- Sprint Jet Airbrush Compressor (IS800)
- Air Hose
- Replacement Air Intake Filter
- Air Hose Adapters for use with Badger, Aztec and Paasche Airbrushes (J003)
- Operating Instruction Manual

VOLTAGE CAUTION - READ CAREFULLY -

If you bought the compressor in the country you're going to use it, it's completely ready to go. If you're going to transfer the compressor to another country with a different voltage, you'll need a plug adapter and the appropriate power converter, though this is not recommended.

WARNING: Using a plug adapter and power converter may cause unit to overheat. Any issues resulting from the use of a power adapter and/or power converter are not covered under the ANEST Iwata-Medea warranty.



Part Number	Item ID	Description	Part Number	Item ID	Description
1	ISMT2	Moisture Trap Assembly	6	ISAF1	Air Intake Filter
2	ISFOR1	Regulator O-Ring (Bottom)	7	ISIC1	Air Intake Filter Cap
3	ISMF1	Moisture Filter	8	DTI10	Air Hose
4	ISMTG1	Moisture Trap Cup	9	ISFT2	Rubber Stand
5	SPG2	Pressure Gauge	10	ISOS1	On/Off Switch

**DO NOT USE OIL
IN OR ON THE
COMPRESSOR**

IS850 SMART JET — ASSEMBLY INSTRUCTIONS

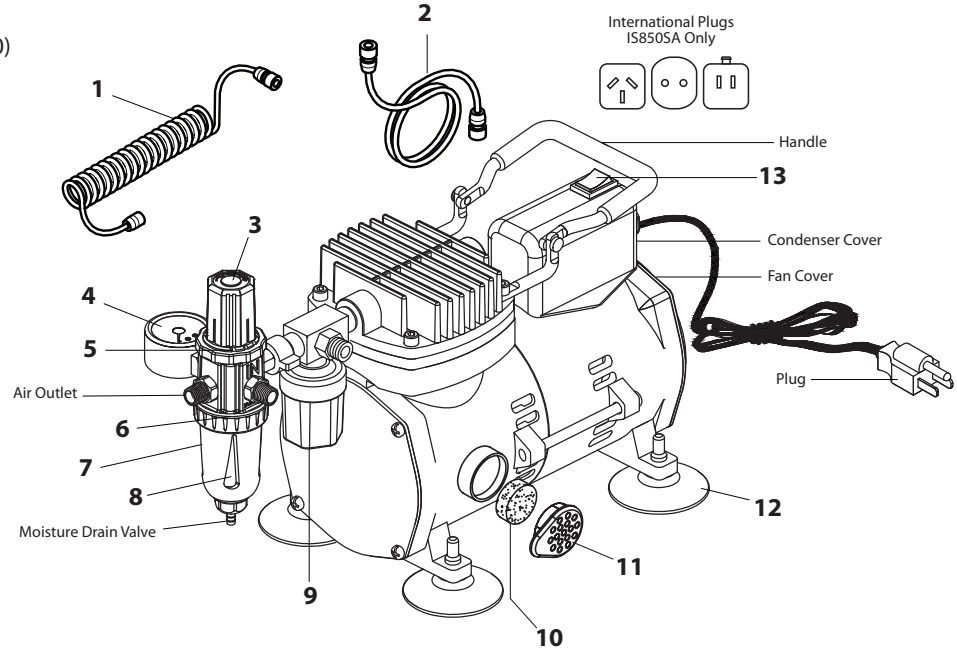
Unpack the compressor and all components:

- Iwata Smart Jet Airbrush Compressor (IS850)
- Coiled Air hose
- Air Hose
- International Plugs (IS850SA only)
- Regulator and Moisture Trap Assembly
- Replacement Air Intake Filter
- Air Hose Adapters for use with Badger, Aztec and Paasche Airbrushes (J003)
- Operating Instruction Manual

VOLTAGE CAUTION - READ CAREFULLY -

If you bought the compressor in the country you're going to use it, it's completely ready to go. If you're going to transfer the compressor to another country with a different voltage, you'll need a plug adapter and the appropriate power converter, though this is not recommended.

WARNING: Using a plug adapter and power converter may cause unit to overheat. Any issues resulting from the use of a power adapter and/or power converter are not covered under the ANEST Iwata-Medea warranty.



Part Number	Item ID	Description	Part Number	Item ID	Description
1	IS130	Coiled Air Hose	8	ISMTG2	Moisture Trap Cup
2	DT110	Straight Air Hose	9	ISPS1	Auto Stop Pressure Switch
3	ISRT1	Air Pressure Regulator	10	ISAF1	Air Intake Filter
4	ISPG2	Air Pressure Gauge	11	ISIC1	Air Intake Filter Cap
5	ISOR2	Regulator O-Ring (Top)	12	ISFT1	Rubber Stand
6	ISOR1	Regulator O-Ring (Bottom)	13	ISOS1	On/Off Switch
7	ISMF1	Moisture Filter			

**DO NOT USE OIL
IN OR ON THE
COMPRESSOR**

IS800 SPRINT JET — GETTING STARTED

1. Screw large end of Straight Air Hose snugly onto air outlet of Moisture Filter Assembly. (Avoid over tightening both ends of hose to avoid early wear)
2. Screw small end of Straight Air Hose snugly to airbrush.
 - a. *Note: If using a brand of airbrush other than Iwata, use appropriate option from included adapter kit. *While not guaranteed to fit all brands beyond Iwata Airbrushes, they're found to fit most.**
3. Plug compressor into a grounded wall outlet that meets all local government specifications.
 - a. *Note: Not for use with extension cords/power strips. *Please refer to name plate on bottom of compressor for power and voltage requirements.**
4. Turn compressor ON by pressing down on On/Off Switch on top of unit.
5. As the unit is being used, water may collect in the moisture filter's clear, plastic bowl. Release the water by following the maintenance instructions.
 - a. *Note: Upon first use, allow to run for 5 minutes. to ensure compressed air is being released and no abnormal sounds or vibrations are present.*

IS800 SPRINT JET — REGULATING THE WORKING PRESSURE

1. With your airbrush connected and the compressor powered on, depress main lever/trigger of your airbrush. Pressure registered on your gauge represents "Working Pressure." Results vary depending on your airbrush's performance requirements. *Learn More at Iwata-Airbrush.com*
2. Adjust working pressure by turning pressure adjustment knob toward + or – while engaging main lever/trigger of airbrush.
3. For max working pressure, close pressure adjustment valve by turning knob towards +.

IS850 SMART JET — GETTING STARTED

1. Attach regulator assembly to compressor output using winged adapter, tightening clockwise.
a. Note: Avoid over tightening of fittings and hoses to avoid early wear
2. Screw Coiled Air Hose onto compressor output located above Auto Stop Pressure Switch.
3. Screw other end of Coiled Air Hose onto small side facing output on Regulator Assembly.
4. Screw large end of Straight Air Hose onto front facing output on Regulator Assembly.
5. Screw small end of Straight Air Hose to airbrush.
a. Note: If using a brand of airbrush other than Iwata, use appropriate option from included adapter kit. While not guaranteed to fit all brands beyond Iwata Airbrushes, they're found to fit most.
6. If using IS850SA choose the appropriate international plug.
7. Plug compressor into a grounded wall outlet that meets all local government specifications.
a. Note: Not for use with extension cords/power strips.
8. Turn compressor on by pressing On/Off Switch.
a. Note: Motor will power on and off as stored air depletes, running to replenish the stored air.
9. Adjust air pressure by pulling up on regulator knob, turning to desired pressure then pushing down to lock in place
a. Note: Turn knob toward "+" to increase, "-" to decrease.
10. As the unit is being used, water may collect in the moisture filter's clear, plastic bowl. Release the water by following the maintenance instructions.
a. Note: Upon first use, allow to run for 5 minutes. to ensure compressed air is being released and no abnormal sounds or vibrations are present.

ENDING A SESSION

1. Release built up moisture in moisture trap.
2. Turn off compressor.
3. Release leftover air by engaging main lever/trigger of your airbrush (being careful of any excess paint).

MAINTENANCE

WARNING

To avoid injury, or damage to your product before performing maintenance and/or inspection:

- Release remaining air in unit away from you and others.
- Turn compressor off.
- Remove power cord from electric outlet.

CHANGING THE AIR INTAKE FILTER

The filter only needs to be changed if it's significantly dirty or dirty enough to cut air flow into the compressor. Inspect your air intake filter once per week with heavy compressor use.

- Use your finger to pull out the filter cover and air intake filter.
- Remove the sponge-like air filter and replace with new air intake filter (ISAF1 – 10 pack).
- Push filter cover with new air intake filter back into place.

IS800 SPRINT JET - RELEASING BUILT-UP MOISTURE IN THE MOISTURE FILTER

- Press a paper towel against the air adjustment valve located at the bottom of the moisture trap.
- Release any collected moisture by turning the air adjustment knob toward the “–” sign allowing moisture trap to drain.

Note: For optimal performance and to avoid early wear, empty at end of each session.

IS850 SMART JET - RELEASING BUILT-UP MOISTURE IN THE MOISTURE FILTER

- Press a paper towel against the drain valve located at the bottom of the moisture trap.

Note: For optimal performance and to avoid early wear, empty at end of each session

TROUBLESHOOTING

IS850 SMART JET - COMPRESSOR TURNS ON AND OFF WHILE AIRBRUSH IS NOT SPRAYING AIR.

The compressor has an air leak. When this happens:

1. Spray all connections with a soapy water solution. Resulting bubbles indicate an air leak.
2. Tighten connections.
3. If bubbling doesn't stop, try wrapping threads with thread sealant tape (max 3 wraps only) or applying beeswax to the threads. Both methods provide an airtight seal.
4. If the air leak is in the middle of an air hose the hose will need to be replaced.

COMPRESSOR SUDDENLY TURNS OFF

The thermal overload switch will turn off your compressor before it overheats. Switch will automatically reset as unit cools.

FOR ANY OTHER PROBLEMS OR ISSUES

Find a local service/repair center located on contact page at beginning of manual.