

# VSE151

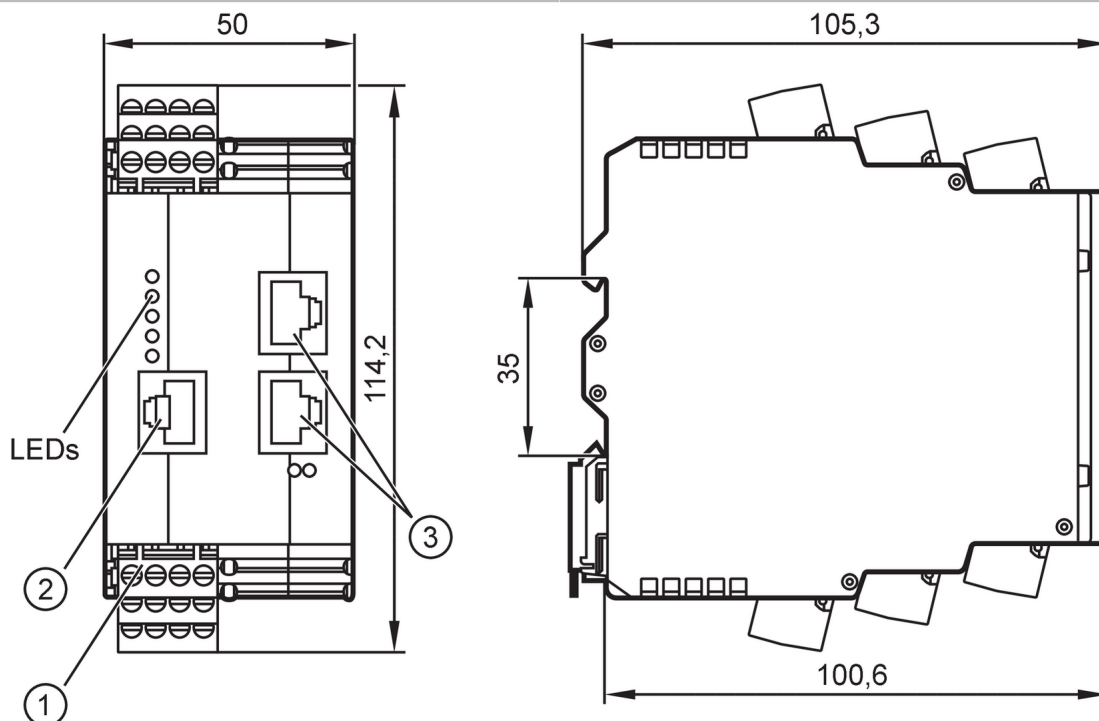


## Diagnostic electronics for vibration sensors

DIAGNOSTIC ELECTRONICS

Article to be discontinued

Discontinuation date: 03/31/2027



- 1 Combicon connector
- 2 Ethernet interface
- 3 fieldbus interface



### Application

Design	housing for DIN rail mounting, parameter setting via PC software, VES004
Application	continuous vibration monitoring

### Electrical data

Operating voltage tolerance	[%]	20
Operating voltage	[V]	24 DC; (when using the IEPE input: 24 V + 20%; IEPE = Integrated Electronics Piezo Electric)
Current consumption	[mA]	200; (24 V)
Protection class		III

### Inputs / outputs

Total number of inputs and outputs	8; (configurable)
------------------------------------	-------------------

### Inputs

#### Dynamic inputs

Number	4
Connection	S1...S4



## Diagnostic electronics for vibration sensors

### DIAGNOSTIC ELECTRONICS

Analog input	function type	Current, dynamic
	input range	0...10 mA / IEPE / 4...20 mA
	input frequency [Hz]	0,1...12000
	Resolution	16 bit
	sampling rate	100 kSamples
<b>Process value inputs, analog / digital</b>		
Number	2	
Connection	IN1, IN2	
Digital input	function type	pulse
	Circuit	HTL
	Frequency [Hz]	0,1...100000
Analog input	function type	Current
	input range [mA]	4...20
	Resolution	12 bit
<b>Outputs</b>		
Max. load	[Ω]	500
Short-circuit protection	yes	
Type of short-circuit protection	yes (non-latching)	
Overload protection	yes	
<b>Multi-function outputs, analog / digital</b>		
Number	1	
Connection	OU1	
Digital output	Electrical design	PNP
	Output function	normally open / normally closed (configurable)
Analog output	function type	Current
	output range [mA]	4...20
<b>Digital outputs</b>		
Number	1	
Connection	OU2	
Digital output	Electrical design	PNP
	Output function	normally open / normally closed (configurable)
<b>Interfaces</b>		
Communication interface	Ethernet	
Number of Ethernet interfaces	1	
<b>Ethernet</b>		
Transmission standard	10Base-T; 100Base-TX	
Transmission rate	10/100 MBit/s	
Type of connector	RJ45	
Protocol	TCP/IP	
Factory settings	IP address: 192.168.0.1	
<b>Ethernet/IP</b>		
Transmission standard	100Base-TX	
Transmission rate	100 MBit/s	



## Diagnostic electronics for vibration sensors

## DIAGNOSTIC ELECTRONICS

Protocol	EtherNet/IP
Factory settings	IP address: 0.0.0.0
	subnet mask: 0.0.0.0
	gateway IP address: 0.0.0.0
	MAC address: see type label
Note on interfaces	QoS (Quality of Service)
	ACD (Address Conflict Detection)
	Supported network topologies: line
	ring

Operating conditions	
Ambient temperature [°C]	0...60
Storage temperature [°C]	0...60
Protection	IP 20

Tests / approvals		
EMC	EN IEC 61000-6-2	
	EN IEC 61000-6-4	
MTTF [years]	91	
UL approval	Ta	0...60 °C
	Enclosure type	open Type
	voltage supply	Limited Voltage/Current
	UL approval number	L001

Mechanical data	
Weight [g]	414.7
Type of mounting	Mounting on DIN rail; (TH35 (EN 60715))
Dimensions [mm]	114.2 x 50 x 105.3
Material	Housing: PA

Data memory	
History memory	yes
Data memory buffered	yes
Data memory type	ring memory; FIFO
Real-time clock	yes
Memory location	internal
Memory interval	min. 1 min
Memory size	881664 data records

Accessories	
Accessories (optional)	cross-over Ethernet patch cable for the direct connection to the PC

Remarks	
Pack quantity	1 pcs.



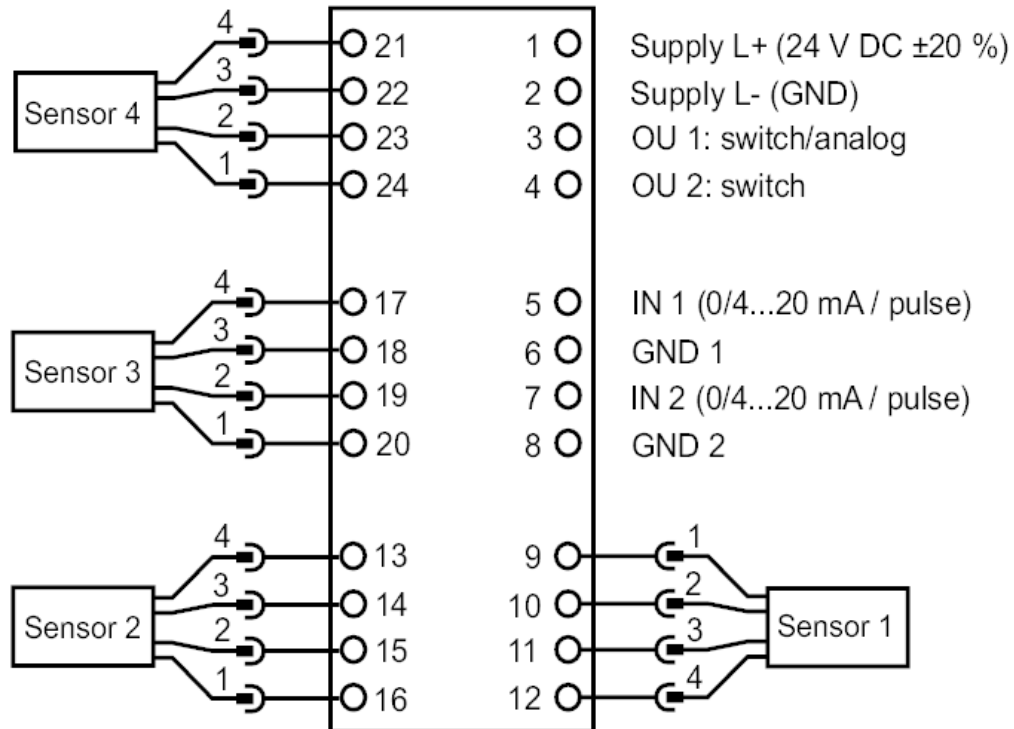
## Diagnostic electronics for vibration sensors

DIAGNOSTIC ELECTRONICS

### Electrical connection

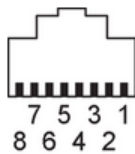
Combicon: ; Maximum cable length: 250 m

#### Connection



### Electrical connection - Ethernet

Connector: RJ45



1	TxD +
2	TxD -
3	RxD +
4	n.c.
5	n.c.
6	RxD -
7	n.c.
8	n.c.