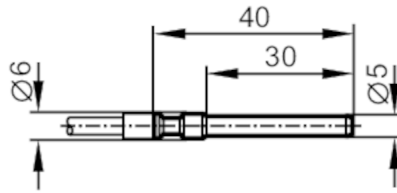


# TS325A



## Temperature cable sensor with process connection

TS-300KEKD06...../3M/3D/3G



Product characteristics		
Measuring range	-20...80 °C	-4...176 °F
Process connection	Clamp fitting Ø 5 mm	
Application		
System	screened cable	
Measuring element	1 x Pt 100; (to DIN EN 60751, class B; operating current max. 10 mA)	
Media	liquids and gases	
Minimum installation depth [mm]	15	
Electrical data		
Insulation rating [V]	2500; (Insulation between sensor housing and internal)	
Protection class	III	
Measuring/setting range		
Measuring range	-20...80 °C	-4...176 °F
Note on measuring range	Measuring range for non-ATEX applications: -20...180 °C / -4...356 °F	
Accuracy / deviations		
Accuracy [K]	± (0,30 K + 0,005 x t )	
Reaction times		
Dynamic response T05 / T09 [s]	4 / 10; (according to DIN EN 60751)	
Operating conditions		
Ambient temperature [°C]	-20...80	
Protection	IP 67	
Tests / approvals		
ATEX marking	II 3D Ex tc IIIC T100°C Dc X II 3G Ex ec IIC T5 Gc X	
MTTF [years]	19025.9	
Mechanical data		
Weight [g]	88.6	
Housing	tubular	
Dimensions [mm]	Ø 5 / L = 40	
Material	stainless steel (1.4404 / 316L)	
Materials (wetted parts)	stainless steel (1.4404 / 316L)	
Process connection	Clamp fitting Ø 5 mm	
Probe diameter [mm]	5	

# TS325A



## Temperature cable sensor with process connection

TS-300KEKD06...../3M/3D/3G

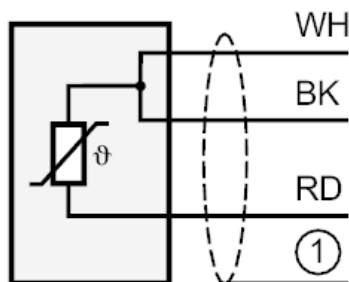
### Remarks

Remarks	The values for accuracy apply to flowing water.
Pack quantity	1 pcs.

### Electrical connection

Cable: 3 m, silicone, screened

### Connection



- 1 = screen not connected to the housing
- Core colors :
- WH = white
- BK = black
- RD = red