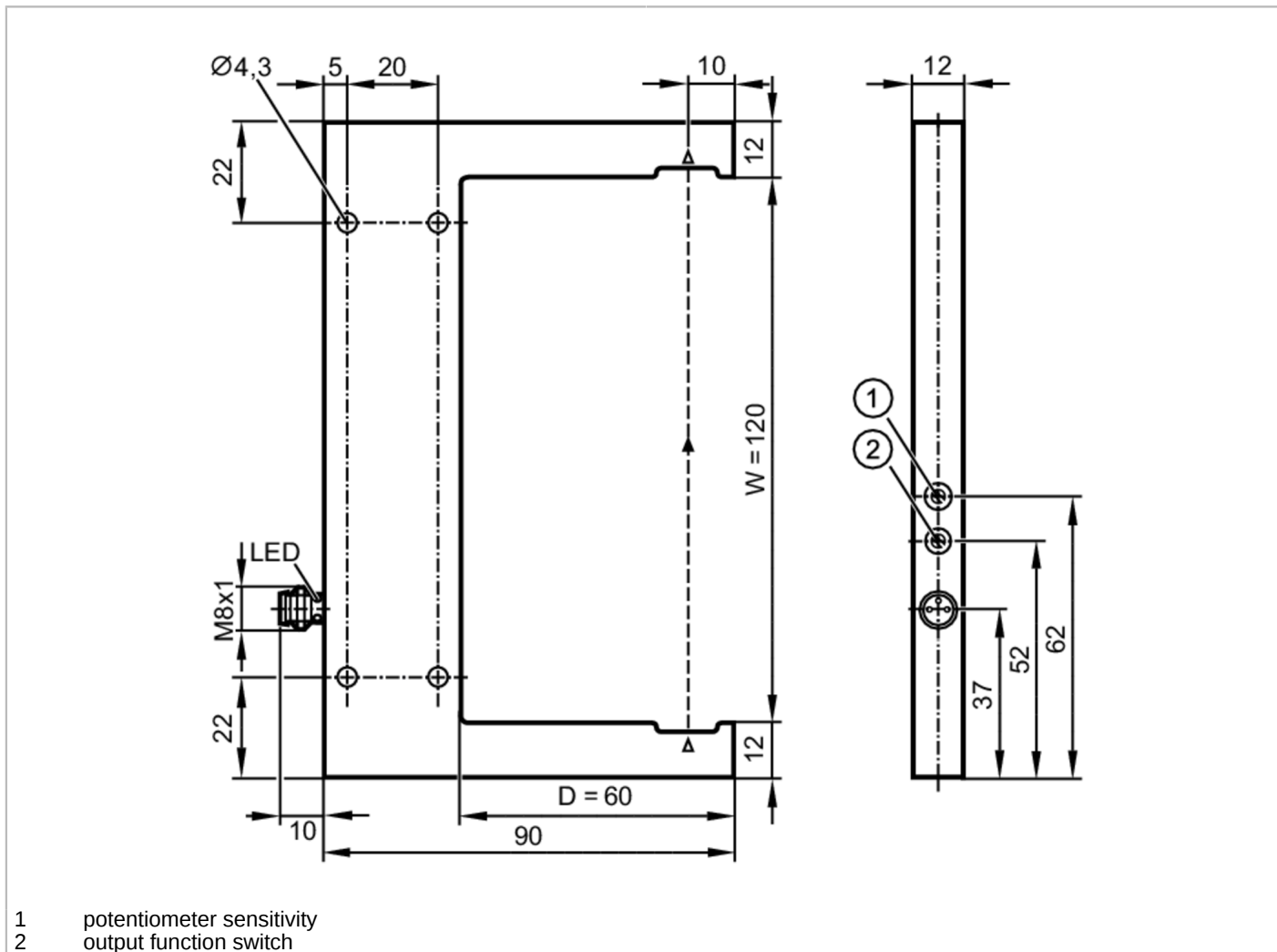


OPU205



Photoelectric fork sensor

OPU-FCKG/IO-LINK/AS



Product characteristics	
Type of light	red light
Electrical data	
Operating voltage [V]	10...30 DC; (cULus - Class 2 source required)
Current consumption [mA]	< 30
Protection class	III
Reverse polarity protection	yes
Type of light	red light
Wave length [nm]	660
Outputs	
Electrical design	PNP
Output function	light-on/dark-on mode; (selectable)
Max. voltage drop switching output DC [V]	1
Permanent current rating of switching output DC [mA]	100
Switching frequency DC [Hz]	5000

OPU205



Photoelectric fork sensor

OPU-FCKG/IO-LINK/AS

Short-circuit protection	yes
Type of short-circuit protection	yes (non-latching)
Overload protection	yes
Monitoring range	
Diameter of the smallest detectable object [mm]	0.5
Interfaces	
Communication interface	IO-Link
Transmission type	COM2 (38,4 kBaud)
IO-Link revision	1.1
SDCI standard	IEC 61131-9
Profiles	Smart Sensor - SSP 0 Generic Profiled Sensor
	Function Device identification
	Function Multiple switching signal
	Function Process data variable
	Function Device diagnosis
	Function Teach channel
SIO mode	yes
Required master port class	A
Min. process cycle time [ms]	3.2
Supported DeviceIDs	Type of operation default
	DeviceID 1104
Operating conditions	
Ambient temperature [°C]	-25...60
Protection	IP 67
Tests / approvals	
EMC	EN 60947-5-2
MTTF [years]	709
Mechanical data	
Weight [g]	296.5
Dimensions [mm]	144 x 12 x 90
Fork depth D [mm]	60
Fork width W [mm]	120
Material	housing: diecast zinc black anodized; lens: glass
Displays / operating elements	
Display	Switching status 1 x LED, yellow
Remarks	
Remarks	cULus - Class 2 source required
Pack quantity	1 pcs.

OPU205



Photoelectric fork sensor

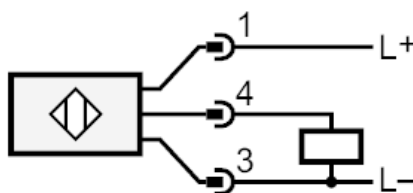
OPU-FCKG/IO-LINK/AS

Electrical connection

Connector: 1 x M8; coding: A



Connection



4 OUT / IO-Link

Other data

operating mode adjustable via IO-Link

	standard	High Resolution	Power	Speed
Resolution	0.05 mm	0.03 mm	1.5 mm	0.5 mm
Repeatability	0.02 mm	0.02 mm	0.02 mm	0.02 mm
Switching frequency	5000 Hz	1500 Hz	250 Hz	8000 Hz
Repeatability	3 σ			