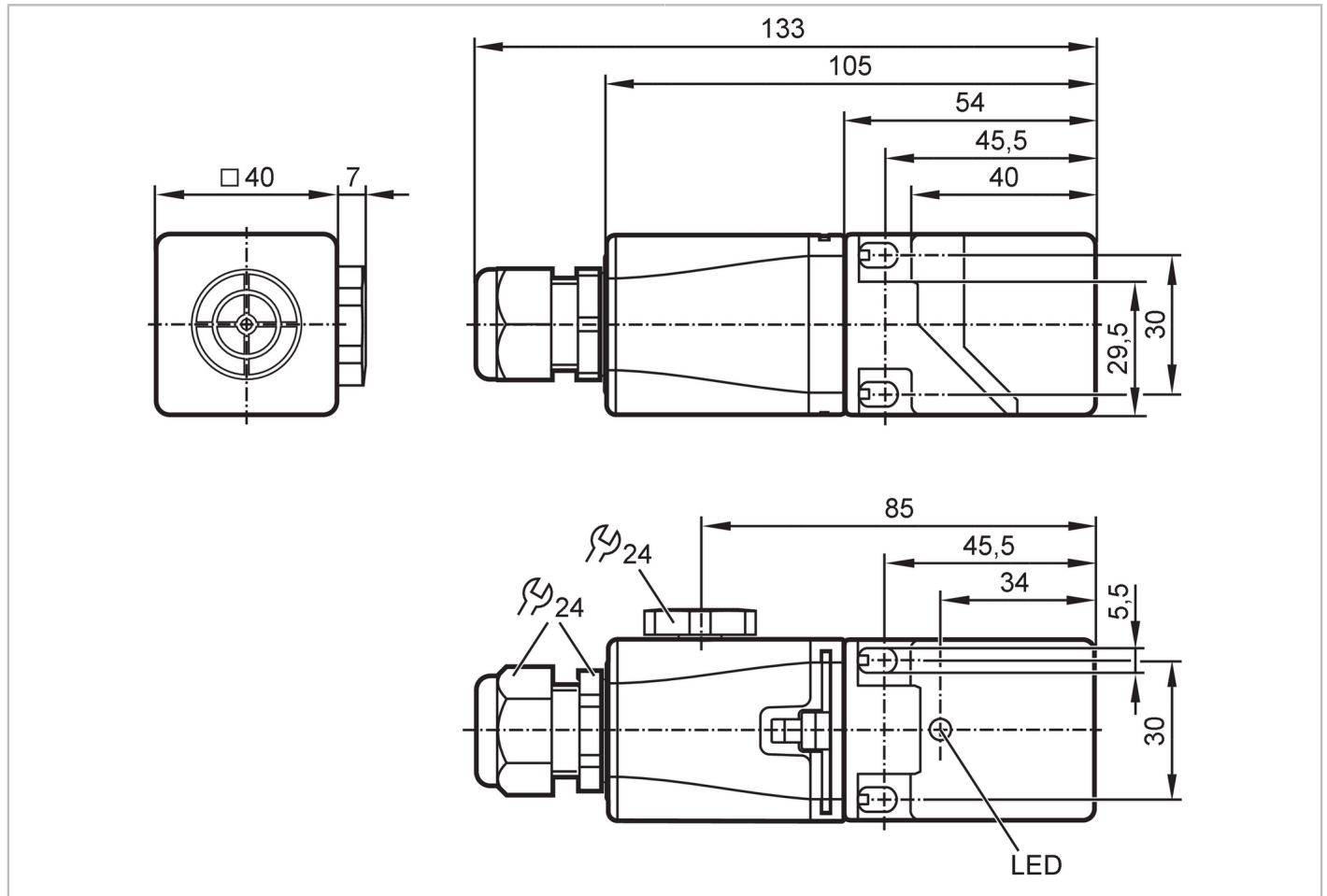


IM506A



Inductive sensor

IME3020BFPKG/3D



Product characteristics	
Output function	normally open / closed; (selectable)
Sensing range [mm]	20
Housing	rectangular
Dimensions [mm]	40 x 40 x 105
Electrical data	
Operating voltage [V]	10...30 DC
Current consumption [mA]	< 15
Protection class	III
Reverse polarity protection	yes
Outputs	
Output function	normally open / closed; (selectable)
Max. voltage drop switching output DC [V]	2.5
Max. leakage current [mA]	0.5
Permanent current rating of switching output DC [mA]	200
Switching frequency DC [Hz]	100
Short-circuit proof	yes

IM506A



Inductive sensor

IME3020BFPKG/3D

Overload protection	yes
---------------------	-----

Monitoring range

Sensing range [mm]	20
Real sensing range Sr [mm]	20 ± 10 %
Operating distance [mm]	0...16.2

Accuracy / deviations

Correction factor	steel: 1 / stainless steel: 0.7 / brass: 0.4 / aluminum: 0.3 / copper: 0.2
Hysteresis [% of Sr]	1...20
Switch-point drift [% of Sr]	-10...10

Operating conditions

Ambient temperature [°C]	-20...60
Protection	IP 65; IP 67

Tests / approvals

Approval	BVS 20 ATEX E 056X; IECEx BVS 20.0043X
ATEX marking	II 3D Ex tc IIIC T95°C Dc
EMC	EN 60947-5-2
MTTF [years]	1326

Mechanical data

Weight [g]	243.5
Housing	rectangular
Mounting	flush mountable
Dimensions [mm]	40 x 40 x 105
Material	housing: PC black; sensing face: PC black; connection module: PA black; Mounting adapter: PC black; screw: steel galvanized

Displays / operating elements

Display	Switching status	1 x LED, yellow
---------	------------------	-----------------

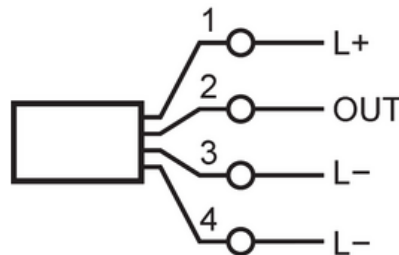
Remarks

Pack quantity	1 pcs.
---------------	--------

Electrical connection - plug

terminals: 0.34...1.5 mm²; Cable sheath: Ø 5...9 mm

Connection



normally open

1	L+	
2	OUT	DO (NO)
3	L-	(programmable via wiring)
4	n.c.	

IM506A



Inductive sensor

IME3020BFPKG/3D

normally closed

1	L+	
2	OUT	DO (NC)
3	n.c.	
4	L-	(programmable via wiring)

DO: digital output