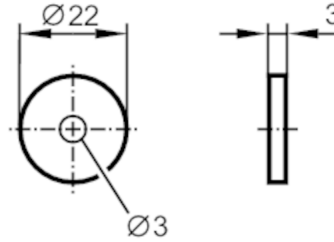


E80404



RFID tag

ID-TAG/22X3.0/06



Application

| | |
|-------------------------------------|----------|
| Operating temperature (active) [°C] | -25...90 |
| Peak temperature (passive) [°C] | 120 |

Electrical data

| | |
|---|------------|
| Operating frequency [MHz] | 13,56 |
| Memory size [bit] | 896 |
| Memory type | EEPROM |
| Chip type | ICODE SLIX |
| Number of the blocks | 28 |
| Block size [Byte] | 4 |
| Unique Identification Number (UID) [Byte] | 8 |
| RFID standard | ISO 15693 |
| Max. read cycles | unlimited |
| Max. write cycles | 100000 |

Operating conditions

| | |
|--------------------------|-----------|
| Ambient temperature [°C] | -25...90 |
| Storage temperature [°C] | -25...120 |
| Protection | IP 68 |

Tests / approvals

| | | |
|----------------------|-----------------|-------------------|
| Shock resistance | DIN IEC 68-2-27 | 40 g 18 ms |
| Vibration resistance | DIN IEC 68-2-6 | 10 g 10...2000 Hz |
| Radio approval | | ISO 15693 |

Mechanical data

| | |
|------------------|---|
| Weight [g] | 18.65 |
| Type of mounting | Installation on metal and non-metal materials; (screw fastening ; sticking to a surface ; In case of installation on metal, mount marked side on surface (marking: B or dot)) |
| Dimensions [mm] | Ø 22 / L = 3 |
| Material | PA 9T |

Remarks

| | |
|---------------|---------|
| Remarks | |
| Pack quantity | 10 pcs. |

E80404



RFID tag

ID-TAG/22X3.0/06

Other data

Reading distance when mounted on non-metal (mm)

| | |
|--|----|
| ANT410 / DTI410 | 6 |
| ANT411 / DTI411 | 10 |
| ANT420 / DTI420 / DTM424 / DTI424 / DTM426 | 5 |
| ANT421 / DTI421 / DTM425 / DTI425 / DTM427 | 15 |
| ANT430 / DTI430 / DTM434 / DTI434 / DTM436 | 10 |
| ANT431 / DTI431 / DTM435 / DTI435 / DTM437 | 15 |
| ANT513 / DTI513 / DTC510 | 15 |
| ANT515 / DTI515 / ANT516 / DTI516 | 5 |
| ANT600 / DTI600 | 40 |

read distance when mounted on metal (mm)

| | |
|--|----|
| ANT410 / DTI410 | 6 |
| ANT411 / DTI411 | 10 |
| ANT420 / DTI420 / DTM424 / DTI424 / DTM426 | 8 |
| ANT421 / DTI421 / DTM425 / DTI425 / DTM427 | 16 |
| ANT430 / DTI430 / DTM434 / DTI434 / DTM436 | 15 |
| ANT431 / DTI431 / DTM435 / DTI435 / DTM437 | 20 |
| ANT513 / DTI513 / DTC510 | 25 |
| ANT515 / DTI515 / ANT516 / DTI516 | 10 |
| ANT600 / DTI600 | - |