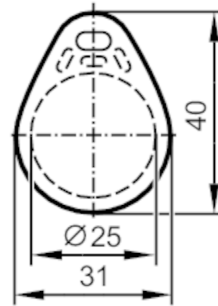


# E80387



## RFID tag

ID-TAG/Tear Shape/06



Application		
Application	Coding of workpiece carriers in routing conveyors	
Operating temperature (active) [°C]	-25...55	
Peak temperature (passive) [°C]	75	
Electrical data		
Operating frequency [MHz]	13,56	
Memory size [bit]	896	
Memory type	EEPROM	
Chip type	ICODE SLIX	
Number of the blocks	28	
Block size [Byte]	4	
Unique Identification Number (UID) [Byte]	8	
RFID standard	ISO 15693	
Max. read cycles	unlimited	
Max. write cycles	100000	
Operating conditions		
Ambient temperature [°C]	-25...55	
Storage temperature [°C]	-25...75	
Protection	IP 66	
Tests / approvals		
Shock resistance	DIN IEC 68-2-27	40 g 18 ms
Vibration resistance	DIN IEC 68-2-6	10 g 10...2000 Hz
Radio approval	ISO 15693	
Mechanical data		
Weight [g]	21.6	
Type of mounting	installation on non-metal materials; (fixing eyelet)	
Dimensions [mm]	40 x 31 x 4.8	
Material	ABS	
Remarks		
Pack quantity	5 pcs.	

# E80387



## RFID tag

ID-TAG/Tear Shape/06

### Other data

#### Reading distance when mounted on non-metal (mm)

ANT410 / DTI410	10
ANT411 / DTI411	20
ANT420 / DTI420 / DTM424 / DTI424 / DTM426	15
ANT421 / DTI421 / DTM425 / DTI425 / DTM427	40
ANT430 / DTI430 / DTM434 / DTI434 / DTM436	30
ANT431 / DTI431 / DTM435 / DTI435 / DTM437	45
ANT513 / DTI513 / DTC510	60
ANT515 / DTI515 / ANT516 / DTI516	30
ANT600 / DTI600	80