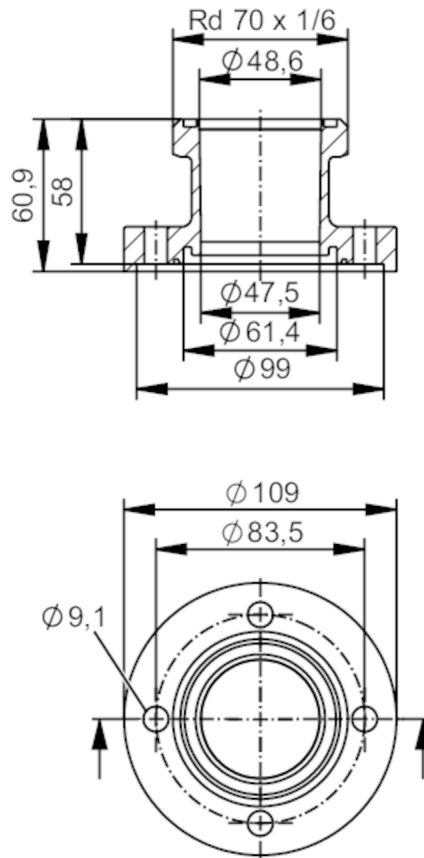


E40513



Process adapter SMS 1145

ADAPT SMS1145 DN50



EC 1935/2004 FCM FDA

Application	
Design	for flow meter SMF
Application	food and beverage industry; hygienic systems
Pressure rating	16 bar 1.6 MPa
Tests / approvals	
Pressure equipment directive	A possible classification to PED depends on the application and has to be carried out by the user / operator.
Safety instructions	The compatibility between medium and product material has to be checked in all applications.
Mechanical data	
Weight [g]	2940
Housing	tubular
Dimensions [mm]	Ø 109 / L = 60.9
Material	stainless steel (1.4404 / 316L)
Nominal diameter	DN50 (2")
Sensor connection	ifm-specific device flange
Process connection	SMS 1145
Process connection suitable for pipe standard	(ISO 2037); (DIN EN 10357 Series D)

E40513



Process adapter SMS 1145

ADAPT SMS1145 DN50

Surface characteristics Ra/Rz of the wetted parts	Ra < 0.4 µm
---	-------------

Accessories

Items supplied	screws 8
----------------	----------

Remarks

Pack quantity	2 pcs.
---------------	--------